

“Live Chicks” Require First Class Treatment:

The U.S. Special Handling Service

Robert G. Rufe

The Special Handling service was introduced in 1925, and flourished through the middle of the twentieth century, according fourth class mail – parcels generally in excess of 4 oz. and up to 70 lbs. – the speed and urgency of first class mail service.

SPECIAL HANDLING – FORERUNNER OF PRIORITY MAIL

One of the most popular and well-recognized services of the United States Postal Service today is Priority Mail, which moves parcels by air or surface, whichever is faster for the distance covered. While Special Handling has never been viewed as a forerunner to Priority Mail in the philatelic community, its importance to commerce and industry during its heyday, 1925 to 1968, was significant.

Not long after the advent of Parcel Post in 1913, farmers began shipping day-old chicks, and queen bees, amongst other “lives” – the post office’s term for live animals – through the mails. At first, there was little effort given to moving these parcels with any greater urgency than normally accorded parcel post, and such goods languished with the “time and space available” protocol normally given this less-than-first-class mail category. Over time, however, shippers

and customers alike learned to petition mail clerks and carriers to give live chicks special treatment – moving them with the first class mail, and thereby improving their prospects for survival at final destination. Call them opportunists if you will, but since the Post Office Department realized they were providing this “first class” service anyway, why not codify the service as “Special Handling” and charge a fee for this special treatment? And so the Special Handling service was born in 1925. When introduced, it provided the first means by which shippers of time-sensitive merchandise could specify expedited movement from the Post Office.

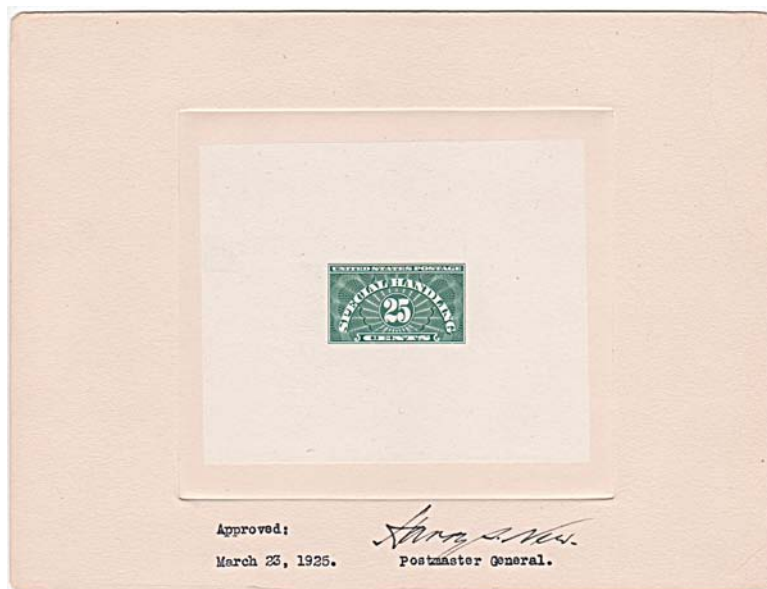


FIGURE 1. The Special Handling service was introduced in 1925 with a 25¢ denomination stamp, which provided flat rate service anywhere in the U.S. From the collection of Robert G. Rufe.

The Postal Service Act, approved on February 28, 1925, provided for a Special Handling stamp denominated at 25¢ (Figure 1) “for use on fourth class mail matter, which would secure for such mail the expeditious handling accorded to mail matter of the first class.”



FIGURE 2. 1935 mailing label for day-old chicks, the living “merchandise” for which the Special Handling service was established. These “lives” were expedited and moved with the first class mail. From the collection of Robert G. Rufe.

Now that this service was specifically required by the Post Office, all baby chicks (Figure 2) and queen bees (Figure 3) would have a good prospect of surviving their adventure in the mail stream.

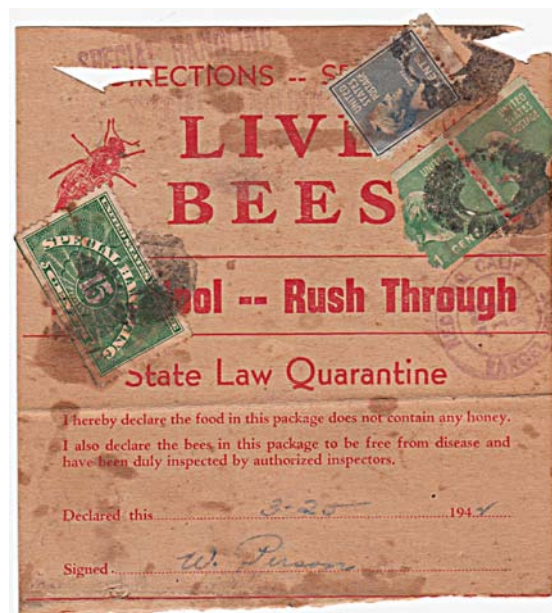


FIGURE 3. Address and handling information card for live bees, the second category earmarked for expediting by Special Handling. The 15¢ fee covered contents from 2 to 10 lbs. From the collection of Robert G. Rufe.



FIGURE 4. 1932 wrapper for shipment of baby alligators, the third category of “lives” which were specifically identified as requiring Special Handling service. From the collection of Robert G. Rufe.

Baby alligators (Figure 4) would be added to the regulation in July, 1925. For a 25¢ flat fee, regardless of distance, parcels up to 70 lbs. would be moved with the first class mail from the post office of dispatch to the post office of destination. Parcel Post was distance and weight based, Special Handling was not, at least when it was introduced. This new service was further promoted in 1928 with the introduction of significantly reduced fees for three new weight categories – 10¢ up to 2 lbs., 15¢ from 2 to 10 lbs., and 20¢ from 10 lbs. to the 70 lb. maximum weight limitation for Parcel Post – Fourth Class matter (Figure 5).



FIGURE 5. Fees were reduced in July, 1928 to promote Special Handling services. The top rate was reduced from 25¢ to 20¢, for parcels from 10 to 70 lbs. The other new fees were 10¢ for less than 2 lbs., and 15¢ from 2 to 10 lbs. Special Handling fees were based on parcel weight, not distance shipped. From the collection of Robert G. Rufe.

SPECIAL HANDLING VS. SPECIAL DELIVERY

Special Handling was not Special Delivery, and vice-versa. In the broadest sense, Special Delivery accorded immediate dispatch and delivery of all mail matter, regardless of class, upon arrival at the destination post office. Special Handling accorded First Class treatment of parcel post matter between the post offices of receipt and delivery. For parcel post matter the primary difference in practicality was that Special Handling assured the expeditious movement of packages between post offices, whereas Special Delivery provided for immediate delivery upon arrival at the post office of the addressee.



FIGURE 6. This 1926 mailing tag assured the fastest delivery possible for a parcel - Special Handling to move between post offices with the first class mail, and Special Delivery to provide immediate delivery from the post office of the addressee.
From the collection of Robert G. Rufe.

Special Delivery could be, and often was added to Special Handling parcels. The April 1925 Supplement of the Postal Guide was very clear: “Add the Special Handling (25¢) to the Special Delivery (10, 15, or 20¢) and one has the very best service possible for any article of parcel post.” (Figure 6)

As part of the 1928 rate changes, and all subsequent rate changes, Special Handling service was included as part of Special Delivery, but always at a higher cost. Conversely, Special Handling has never been accorded Special Delivery service from the destination post office, except that the “Special Handling fee should assure the most expeditious handling possible.” This meant that Special Handling parcels would be delivered with the next scheduled first-class delivery, but not “immediately” as Special Delivery required.

POPULARITY AND PRACTICALITY OF SPECIAL HANDLING

Although the service was developed for “lives,” numerous businesses and individuals outside agribusiness found this new mailing category perfectly suited to applications in their mailings. A few examples have been verified by the mailing wrappers that have survived these applications. The printing industry moved both printing plates and finished print jobs with Special Handling to meet press run and issue deadlines (Figure 7).

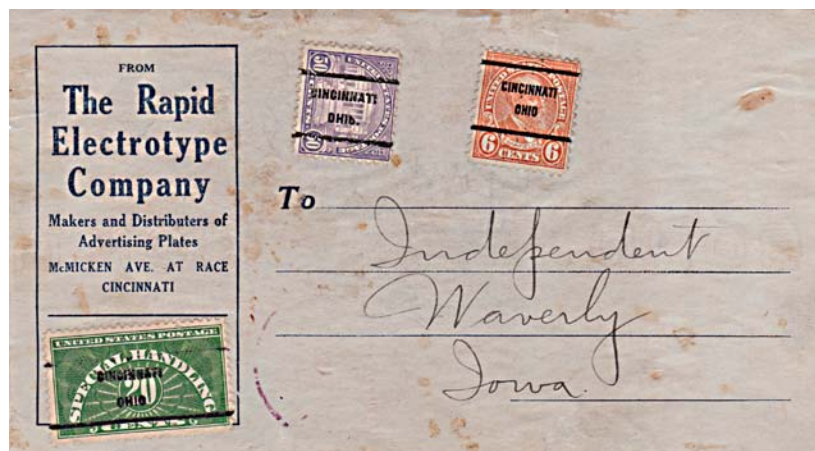


FIGURE 7. Printing plates for advertising expedited to the Waverly, OH *Independent* newspaper in 1931. The 20¢ Special Handling stamp covered from 10 to 70 lbs. for any distance shipped.
From the collection of Robert G. Rufe.

Non-profits, libraries, churches and service organizations, including for example, AA, shipped time-sensitive movie film and slides with Special Handling to assure arrival by publication or meeting schedule requirements (Figure 8).

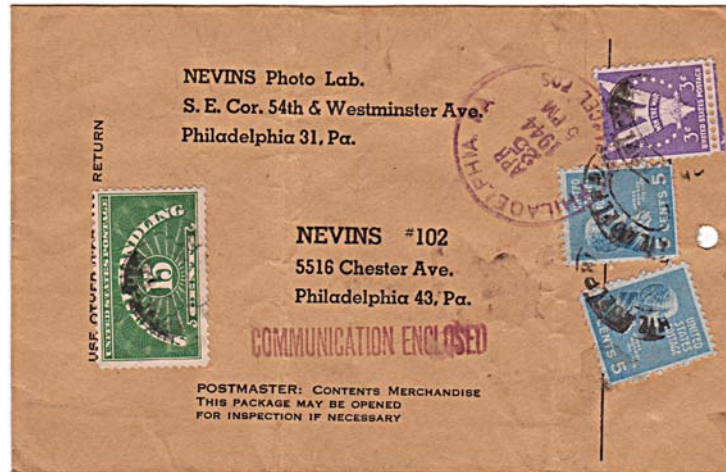


FIGURE 8. 1944 mailing label for a 5 lb. parcel to a Philadelphia photo lab. Special Handling rates were unchanged from 1928 to 1949. From the collection of Robert G. Rufe.

On a strictly personal level, college students and some military personnel were kept in clean clothes and tasty snacks by the movement and return of laundry cases between dorm or barracks and home with the speed provided by Special Handling (Figure 9).



FIGURE 9. This card was inserted in a reusable laundry case for a Harvard University student to have his weekly laundry done at home, and returned with the speed of first class mail. From the collection of Robert G. Rufe.

Special Handling had both its supporters and detractors, but proponents and opponents alike took sides relative to the stamps, and not to the service. Service-designated stamps were introduced in 1925, and updated in 1928 to reflect the new reduced rates. In fact, the 10, 15, and 20¢ stamps remained available until withdrawn in 1959, fully 31 years later and arguably, hold the record for the longest running, regularly available postage stamps in U.S. history. Opponents of the distinctive stamps claimed everyone knew that day-old chicks required “special handling” to survive, and that dedicated stamps were unnecessary - regular stamps would suffice. Representing the other side of the argument, one postal inspector claimed this service was so critical that even more distinctive stamps were essential; he proposed the first triangular stamp design in U.S. postal history (Figure 10)!



FIGURE 10. Author’s rendition of what a postal inspector’s proposed design for a distinctive triangular Special Handling stamp in 1928 might have looked like.

Suffice to say, the public generally has never understood Special Handling nor the advantages of using the service. John H. Bartlett, First Assistant Postmaster General, in the January, 1928 *The Postmasters’ Advocate*, recommended increased advertising for the service, pointing out that “Ordinary parcel post not having the special handling stamp thereon, and therefore not entitled to the special handling service, is ... necessarily slower and less careful

than the special-handling service... (wherein) ... A bundle is specially handled from beginning to end. It is not put into storage cars with other parcel post, but travels in the railway postal cars where men are employed.” And further: “The Department has recommended the consolidation of these two stamps, but that has not yet been enacted into law.” Had Special Handling and Special Delivery services been consolidated, the result would essentially have been what we today call Priority Mail!

TRANSITION TO PRIORITY MAIL

The value of Special Handling itself has never been questioned, and its benefits have been acknowledged ever since its introduction; however, the service never really “caught on” with the general public. From 1925 to 2005, revenues grew from \$0.7 million to \$10.3 million, relatively insignificant in terms of overall United States Postal Service operations. To put this into perspective, total Package Services revenue in 2010 was \$1.5 billion.



FIGURE 11. Air Parcel Post service was introduced on September 1, 1948, at rates substantially higher than Special Handling. This is one of four covers prepared by Henry Hammelman to commemorate this new service. From the collection of Robert G. Rufe.

In the presence of competitive services, Special Handling revenue fell in 1948 when Air Parcel Post was introduced (Figure 11), and again in 1968 when Priority Mail and Parcel Airlift services were introduced (Figure 12). Air Parcel Post allowed the shipper to specify parcel movement by air, but carried a higher-priced rate structure than Special Handling; however, Special Handling also required shipment via air if it were deemed faster than surface movement.



FIGURE 12. A new Parcel Airlift service was introduced for shipments up to 30 lbs. to overseas military post offices. This had little impact on Special Handling revenues, since very little international mail employed the Special Handling option.
From the collection of Robert G. Rufe.

Priority Mail incorporated the best of both Air Parcel Post and Special Handling services – moving parcels with the speed and efficiency of First Class mail, and incorporating both the weight and distance factors associated with Parcel Post, but at a lower cost than Special Handling. Shippers of “lives” still used Special Handling, but transitioned to Priority Mail over time as they found clerks willing to accept their time-sensitive parcels – live chicks, game birds, bees and bait as examples – at the lower rates of Priority Mail. Today there are but a few shippers of “lives” who specify the Special Handling option, perhaps a result of tradition and confidence in the service.

CURRENT REGULATIONS

As this is written in 2011, Special Handling still exists, although it would seem to be obsolete in the presence of Priority Mail and Express Mail services. It is unclear from extensive interviews with USPS personnel exactly what service is provided for the fee charged, but the regulations are so brief as to allow the complete statement of what the current Domestic Mail Manual, DMM 503, Section 13.0, says:

“The Special Handling Fee is in addition to postage and other fees, per piece.

“The applicable special handling fee must be paid in addition to postage for each addressed piece for which special handling service is desired. Except for official mail, the special handling fee must be paid at the time of mailing. For official mail, the special handling fee is collected under established reimbursement procedures.

“Special handling service provides preferential handling, but not preferential delivery, to the extent practicable in dispatch and transportation. The service does not itself insure the article against loss or damage. Special handling service is mandatory for material that requires extra care in handling, transportation, and delivery.

“Special handling service is available only for First-Class Mail, Priority Mail (excluding Critical Mail), Package Services, and Parcel Select pieces.

“The following extra services may be combined with special handling if the applicable standards for the services are met and the additional service fees are paid: COD, Delivery Confirmation, Insurance, PAL (for Package Services only), Return receipt for merchandise, and Signature Confirmation.

“(Regarding) Bees and Poultry, unless sent at the First-Class Mail or Priority Mail prices, special handling is required for parcels containing honeybees or baby poultry. Only queen honeybees may be shipped by aircraft. Check with your local Post Office for mailability prior to mailing honeybees other than queen honeybees at First-Class Mail or Priority Mail prices.

“The marking "Special Handling" must appear prominently above the address and to the right of the return address on each piece for which special handling service is requested.

“The Parcel Select nonmachinable surcharge is not charged on parcels sent with special handling.”

Accordingly, even the specific regulations written for Special Handling support the use of Priority Mail for honeybees and baby poultry, and the lower rate structure for Priority Mail seems to favor Priority Mail over Special Handling. First Class is also supported, but with a 13 oz. weight limitation, this class of mail service is not really applicable for chicks and bees.

Historically, Special Handling pieces were the last parcels loaded into a given shipping container or vehicle and the first offloaded upon arrival at each destination. Mail sacks containing Special Handling matter had their own special yellow tags for high visibility (Figure 13). The fee for this special treatment was, and is, in addition to the basic postage for any class of service, and is not included in any class of service; further, Special Handling is specifically excluded from the new Critical Mail category, a reduced-cost commercial subset of Priority Mail.



FIGURE 13. Since 1928, distinctive yellow baggage tags have been used to alert postal workers that Special Handling parcels were enclosed, which required shipping with the first class mail.
From the collection of Robert G. Rufe.

SPECIAL HANDLING AND INSURED MAIL FORMS

Another ambiguity with the intention of the postal service regarding Special Handling becomes evident upon examination of the current domestic Insured Mail Receipt forms – both the black version “\$200 and Under” (PS Form 3813) and the blue “Over \$200” (PS Form 3813-P) forms (Figure 14).

The image shows the USPS Form 3813-P, May 2007, Domestic Only, Over \$200 Insured Mail Receipt. The form is divided into several sections. On the left, there is a vertical bar with the text "U.S. Postal Service®" and "INSURED MAIL - DOMESTIC ONLY". Below this is a barcode and the text "VH 927 696 845 US". The main title of the form is "U.S. Postal Service® DOMESTIC ONLY Over \$200 INSURED MAIL RECEIPT". Below the title is a section labeled "OFFICIAL USE" with checkboxes for "Fragile", "Perishable", "Liquid", and "Hazardous". There are also checkboxes for "Insurance Coverage". The form includes fields for "Postage", "Insurance Fee", "Restricted Delivery Fee (endorsement required)", "Special Handling Fee", and "Return Receipt Fee (endorsement required)". A "Total Postage & Fees" field is also present. Below these fields is a "Postmark Here" area. At the bottom, there is a "Send to:" section with fields for "Street, Apt. No., or PO Box No.", "City, State, ZIP+4®", and "PS Form 3813-P, May 2007". To the right of the form, there is a separate box labeled "Special Handling Fee" with a note "(endorsement required)" above it.

FIGURE 14. USPS Form 3813-P, May 2007, offering postal patrons the opportunity to purchase Special Handling service. There is the perception, if not the implied guarantee, that special care and attention will be given to parcels so designated. From the collection of Robert G. Rufe.

Both forms provide check boxes for declaration to postal clerks as to whether parcel contents are “fragile, liquid, perishable or hazardous.” It is said that items so marked are to be segregated from other parcels, but postal clerks differ as to whether this occurs in reality. Further, these are seemingly rhetorical questions – what difference does it make if one or all four boxes are checked? The questions appear on the receipt portion of the form which is taken by the customer, and is not attached to the parcel!

These same forms also provide the expected lines for declaring the amount of insurance to be purchased and the fee for the coverage.

There is another line on these forms, however, that is virtually unknown to postal clerks and the public, and never explored, much less requested or utilized. This line provides the option to specify Special Handling – available for First-Class Mail, Priority Mail (excluding Critical Mail), Package Services, and Parcel Select pieces, as cited in the regulations above. One could argue that Special Handling was intended to be required whenever one of the four boxes was checked - “fragile, liquid, perishable or hazardous.” This is not, nor ever has been the case.

The ambiguity of Special Handling in the presence of the availability of Priority Mail is most evident in interviews with USPS personnel. At the local level, window clerks, postmasters, and carriers for the most part are not aware of the existence of Special Handling. At the national level, USPS personnel acknowledge its existence as a special service, primarily as a reporting category, and verify its justified continuation due to reported stable revenues of approximately \$10 million per year. These same cooperative interviewees admit they have no idea what mail matter receives such service. One employee recalled hearing of funerary ashes being shipped with Special Handling, “... but that was many years ago.”

CONCLUSION

Given today’s classes of mail and service options, Special Handling seems at best, redundant, and at worst, obsolete.

Even though the role of Special Handling in today’s postal system is questionable, and its future uncertain, the importance of the Special Handling service is significant in the context of this year’s symposium theme: “How Commerce and Industry Shaped the Mails.” Initially it

provided an upgrade to the Parcel Post system of 1913; for a small fee it allowed time-sensitive parcels or delicate “lives” to move with the speed of First Class mail.

Special Handling was the post office’s first response to industry’s demand for expediting parcel post matter. As the earliest service of the postal system to satisfy this need, Special Handling should be recognized as the forerunner of Air Parcel Post, initially, and ultimately of today’s Priority Mail.

BIBLIOGRAPHY

Bartlett, John H., “Advertise the Special Handling Stamp.” *The Postmasters’ Advocate*, 33(7):220. January, 1928.

Beecher, Henry W., and Wawrukiewicz, Anthony S., *U.S. Domestic Postal Rates, Third Edition, 1872-2011*, Bellefonte, PA: American Philatelic Society, 2011.

Bureau of Engraving and Printing, *Annual Report of the Director of the Bureau of Engraving and Printing, Fiscal Years Ending 1925 – 1931, 1933 and 1934*, Washington, DC, pp. 20, 37, 41, 43, 45, 44, 47, 10, and 62, respectively.

Brett, George W., “Dry Printing - Miscellany.” *The Bureau Specialist*, 32(1):6-7, January, 1961.

Cleland, Wallace B., “Printing History of Special Delivery, Parcel Post, Parcel Post Due, Special Handling, Registration, Official Mail and Postal Savings Flat Plates.” *B. I. A. Research Paper #6*, March, 1994.

Harmer, Bernard D., *The Postage Stamp Collection of Franklin Delano Roosevelt*, H.R. Harmer Inc., New York, N.Y., p. 30, February 4, 1946.

Griffith, Gary, “Special handling was not always an option.” *Stamp Collector*, p. 6, December 23, 1996.

Hotchner, John, “Special handling stamps: mystery cover and searching for dated covers.” *Linn’s Stamp News*, p. 6, February 5, 2007.

Klug, Janet, “How to get your two-bits’ worth of stamps.” *Linn’s Stamp News*, p. 38, March 7, 2005.

- Macdonald, David S., "Parcel post, dues, and special handling stamps." *Stamp Collector*, p. 34, April 26, 1999.
- Pagter, Daniel S. "Three unusual US series on non-philatelic cover test of one's patience." *Stamp Collector*, pp. 33-34, November 15, 1986.
- Peakes, Gilbert L. "The Relief Breaks on the 25¢ Special Handling Stamp." *The United States Specialist*, 75(6): 487-501. November, 1972.
- "Special Delivery and Special Handling Service." *The Postmasters' Advocate*, 33(6):187-188. December, 1927.
- Rufe, Robert G. "U.S. Special Handling Issues – Part I: Transfer Roll Break Varieties of the 1925 First Printing." *The United States Specialist*, 78(10):468-475. October, 2007.
- Rufe, Robert G. "U.S. Special Handling Issues – Part II: The 1928 Second Printing and New Rates." *The United States Specialist*, 78(11): 485-494. November, 2007.
- Rufe, Robert G. "U.S. Special Handling Issues – Part III: The 1955 Experimental Printing on Dry Paper." *The United States Specialist*, 78(12):537-542. December, 2007.
- Rufe, Robert G. "U.S. Special Handling Issues – Update." *The United States Specialist*, 79(10):460-465. October, 2008.
- Rufe, Robert G. "First Day Covers – The Right Way." *The United States Specialist*, 80(8):362-365. August, 2009.
- Rufe, Robert G., "U.S. special-handling service: you get what you pay for – or do you?" *Scott Stamp Monthly*, 28(7):14-17, July, 2010.
- Rufe, Robert G., "The First U.S. Special Handling Commercial FDC – A Stamp without a Service!" *First Days*, 55(5):30-34, July 15, 2010.
- Scott 2012 Specialized Catalogue of United States Stamps & Covers*, 90th ed. Sidney, OH, Scott Publishing Co., 2011.
- Stotts, J.B., "Special Handling Service, 1925-1949." *The United States Specialist*, 65(4):165-166. April, 1994.
- The United States Postal Service, *Domestic Mail Manual Section 503.13.0*, Additional Services: Special Handling, Washington, D.C., <http://pe.usps.com/cpim/ftp/manuals/DMM300/503.pdf>
- U.S. Post Office Department, *Postage Stamps of the United States*, Washington, D.C., Government Printing Office, pp. 52, 57, 58, December, 1965.
- U.S. Post Office Department, *Postal Bulletin*, Washington, D.C., Government Printing Office, 1925 // 1991, Nos. 14710, 14714, 14724, 14763, 15139, 19187, 20033, 20053, 20637.