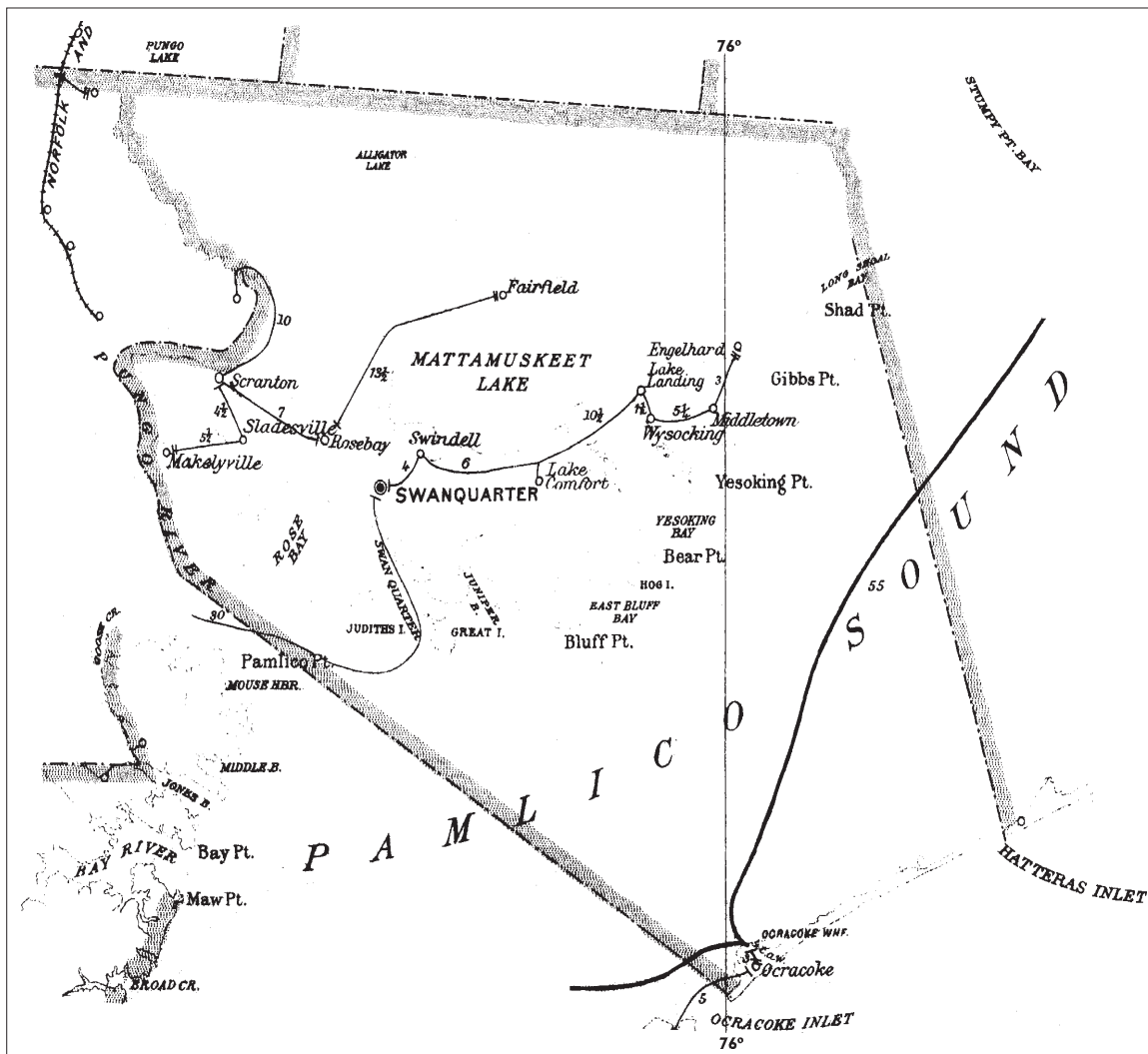


# HYDE COUNTY

Formed in 1712, name changed from Wickham

Number of Post Offices - 31  
Number with postmarks known - 19



## HYDE COUNTY

### Adam's, Adams

(Hyde)

John Adams	13 Oct 1813
Thomas Barrow	by 30 Sep 1823
William Latham	ca 1824
Discontinued	1 Nov 1824

### Americus

(Hyde)

Cumber Ratcliff	31 Oct 1901
Discontinued	15 Oct 1904
Mail to Leechville, Beaufort County	

### Burgess Mill

(Hyde)

Thomas H. Latham	22 Sep 1871
Discontinued	8 Jan 1875

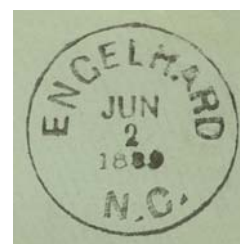
### Engelhard

(Hyde)

Thomas M. Davis	1 Jun 1875
Samuel M. Rollins	2 Dec 1878
John E. Spencer	2 Feb 1880
Eugene C. Bonner	16 Aug 1890
Order rescinded	12 Sep 1890
John M. Clayton continued	12 Sep 1890
Anson S. Gibbs	2 Aug 1897
Eugene C. Boomer	26 Feb 1898
John E. Spencer	27 Jul 1900
Annie G. Midyett	18 Aug 1900
Order rescinded	14 Sep 1900
John E. Spencer continued	14 Sep 1900
William E. Clarke	23 Jun 1904
Trixie M. Mathews, Acting	1 Nov 1938
Trixie M. Mathews	9 May 1939
Odessa W. Jarvis, Acting	30 Nov 1961
Odessa W. Jarvis	25 Jul 1963
Jean M. Cuthrell Officer-In-Charge	1 Oct 1992
Anita F. Fletcher	26 Jun 1993
Jean M. Cuthrell Officer-In-Charge	31 May 2005
Rebecca S. Horton	25 Jun 2005
Sharon D. Williams Officer-In-Charge	20 Oct 2008



Type 1  
32.5 mm Purple  
5 Dec 1881



Type 2  
28 mm Black  
25 Oct 188x  
2 Jun 1889



Type 3  
28.5 mm Black  
25 Dec 1894

# HYDE COUNTY

Engelhard (Cont.)

(Hyde)



Type 4  
28.5 mm Black  
Doane Type 2-2  
21 May 1905  
15 Mar 1913



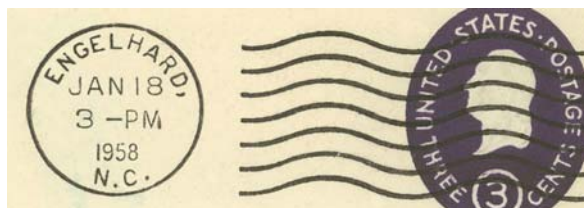
Type 5  
32.5 mm Black  
22 Oct 1915  
17 Aug 1921



Type 6  
30.5 mm Black  
Metal Duplex Type ?  
25 Aug 1949  
3 Jan 1961



Type 7  
32.5 mm Magenta  
1936 Type F/1 4-Bar  
16 Nov 1951



Type 8  
23 mm Black  
International Machine  
Type AT/S 2721  
2 Apr 1957  
27 Apr 1965



Type 9  
23.5 mm Black  
International Machine  
Type ATS/z 2721 (27824)  
3 Apr 1967  
5 Sep 1987

# HYDE COUNTY

Engelhard (Cont.)

(Hyde)



Type 10  
33.5 mm Black  
1963 Type F/2 4-Bar (27824)  
16 Dec 1991



Type 11  
37.5 mm Black  
Self-Inking Postmarker (27824)  
2 Nov 2006



Type 12  
30.5 mm Red  
Self-Inking Postmarker (27824)  
2 Nov 2006

## Rural Station Cancels

Middletown Rural Station

1 Aug 1955

1 Nov 1973



Type 1  
34 mm Black  
1 Aug 1955  
25 Sep 1962



Type 2  
30 mm Magenta  
19 May 1961  
22 Aug 1973

## HYDE COUNTY

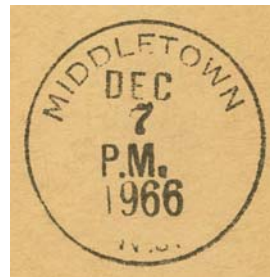
### Engelhard (Cont.)

(Hyde)

Rural Station Cancels Cont.)  
 Middletown Rural Station (Cont.)



Type 3  
 33.5 mm Black (27824)  
 7 Apr 1966  
 22 Aug 1973



Type 4  
 32 mm Black  
 7 Dec 1966

### Enterprise

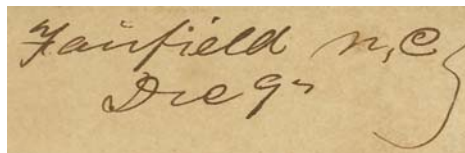
(Hyde)

Thomas H. Smith      13 Sep 1858  
 Discontinued      29 Mar 1860

### Fairfield

(Hyde)

William H. Buffaloe	28 Sep 1847
Henry C. VanNortwick	29 Dec 1848
Ira H. Murray	20 Jun 1850
James B. LaRoque	9 Jun 1851
William Sadler	7 Nov 1854
John Jordan	7 Sep 1855
William Sadler	2 May 1857
William Sadler, CSA	4 Jul 1861
CSA office closed on or before	30 Apr 1865
James J. Swayn	19 Apr 1866
Joana Sawyer	22 Jan 1867
Thomas M. Allen	9 Feb 1869
Edward Adams	28 May 1869
John C. Brown	11 Jan 1871
John C. Sadler	6 Jun 1871
Richard Sadler	10 Sep 1872
Samuel B. Sadler	11 Mar 1873
Charles W. Thomas	5 Jan 1875
Samuel B. Sadler	17 Dec 1875



Manuscript  
 9 Feb 1851



Manuscript  
 23 Apr 1869



Manuscript  
 11 Dec 1874

# HYDE COUNTY

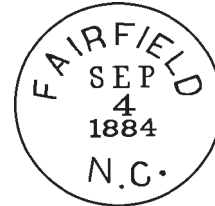
## Fairfield (Cont.)

(Hyde)

Edward B. O'Neal	20 Aug 1880
Richard L. Young	7 Jan 1884
Samuel B. Sadler	14 Jan 1889
John M. Chadwick (declined)	9 Jul 1897
Joseph P. Flowers	29 Oct 1897
Order rescinded	22 Jul 1898
Samuel B. Sadler continued	22 Jul 1898
Albina B. Burgess	13 Jan 1906
Leonard L. Rue	15 Apr 1911
Cora Rue, Acting	25 Oct 1928
Guy R. Cutrell	28 Feb 1929
James K. Ballance, Acting	15 May 1954
James K. Ballance	10 Jun 1955
Isabelle M. Howard, Acting	24 Aug 1956
Isabelle M. Howard	2 Jul 1958
Lyda M. Armstrong Officer-In-Charge	31 Oct 1969
Lyda M. Armstrong	6 Mar 1971
Sandra S. Carawan Officer-In-Charge	17 Jun 1982
C. L. Vanhorn Officer-In-Charge	6 Dec 1982
Sandra S. Carawan	5 Feb 1983
Sharon Denise Williams Officer-In-Charge	28 Dec 2005
Jill J. Spencer	22 Jul 2006
Melinda S. Boyd Officer-In-Charge	1 Feb 2010
Chrystal Vanhorne Officer-In-Charge	24 Aug 2010



Type 1  
25 mm Black  
23 Mar 187x



Type 2  
27.5 mm Black  
10 Feb 188x  
4 Sep 1884



Type 3  
27.5 mm Black  
9 Feb 1900  
12 Feb 1900



Type 4  
31.5 mm Black  
Doane Type 3-3  
9 Mar 1906  
30 Aug 1914



Type 5  
32.5 mm Black  
1910 Type B 4-Bar  
21 Aug 1915



Type 6  
33.5 mm Black  
1931 Type C/2 4-Bar  
12 Oct 1936

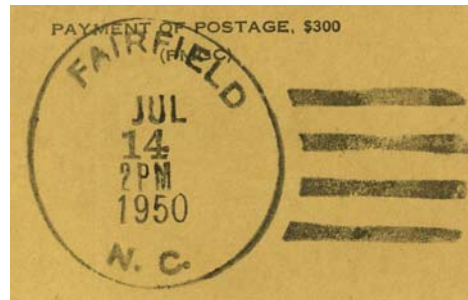
# HYDE COUNTY

Fairfield (Cont.)

(Hyde)



Type 7  
32.5 mm Black  
1936 Type F/1 4-Bar  
3 Dec 1945



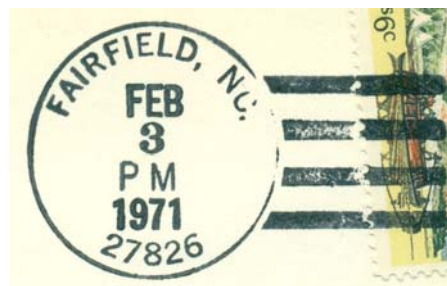
Type 8  
34.5 mm Black  
1936 Type F/1 4-Bar  
14 Jul 1950  
2 Nov 1950



Type 9  
30.5 mm Black  
Metal Duplex Type ?  
23 Nov 1951  
12 Nov 1962



Type 10  
28 mm Magenta  
27 May 1963



Type 11  
33.5 mm Black  
1963 Type F/2 4-Bar (27826)  
16 Nov 1966  
20 Aug 1973



Type 12  
22.5 mm Black  
International Machine  
Type ATS/z 2721 (27826)  
2 Nov 1967  
19 Dec 1985

HYDE COUNTY

Fairfield (Cont.)

(Hyde)



Type 13  
34 mm Black  
1963 Type F/2 4-Bar (27826)  
13 Mar 1992



Type 14  
35 mm Black  
Self-Inking Postmarker  
27826-9998)  
8 Dec 1998



Type 15  
30.5 x 34 mm Black  
Self-Inking Postmarker  
27826-9998)  
2 Nov 2006



Type 16  
40 x 27.5 mm Red  
Self-Inking Postmarker  
27826-9998)  
2 Nov 2006



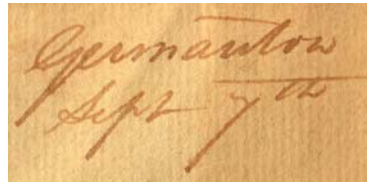
Type 17  
33 mm Black  
Self-Inking Postmarker  
27826-9998)  
25 Jun 2007

## HYDE COUNTY

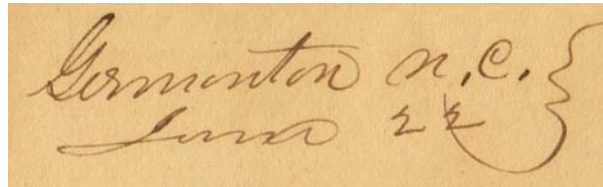
### Germanton

(Hyde)

Seth B. Jordan	15 Jan 1816
George W. Jordan	2 May 1821
Robert Spencer	1 Oct 1821
Noah Bell	2 Jul 1822
George H. Congleton	17 Oct 1825
R. M. G. Moore	27 Apr 1826
Sheldon Tooty	19 Mar 1828
John Brown	14 Dec 1829
Bannister Midyett	28 Jan 1832
Samuel W. Ellis	21 May 1832
Jesse B. Lucas	15 May 1835
William J. Smith	12 Feb 1839
William Dibble	30 Mar 1840
Thomas H. Smith	24 Apr 1841
Discontinued	24 Nov 1842
Banister Midyett	27 Jan 1843
Discontinued	1 May 1844



Manuscript  
7 Sep 1820  
15 Dec 1834



Manuscript  
22 Jun 1836  
27 Jul 1839

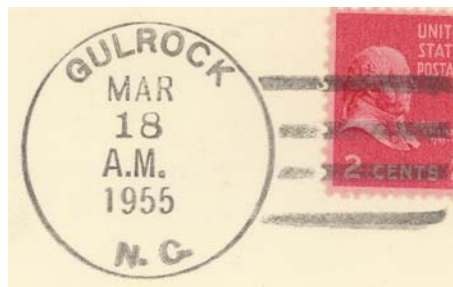
### Gulrock

(Hyde)

David H. Midyett	12 Jan 1921
Clydia A. Midyett, Acting	21 Jan 1940
Clydia A. Midyett	29 Feb 1940
Iona O'Neal, Acting	17 Oct 1947
Iona O'Neal	2 Jan 1948
Discontinued	31 Jul 1955
Mail to Engelhard	



Type 1  
33 mm Black  
1936 Type F/1 4-Bar  
26 Jan 1949  
16 Sep 1949



Type 2  
33.5 mm Black  
1936 Type F/1 4-Bar  
18 Mar 1955

### Hatteras

(Hyde)

Robert Styron	15 Jul 1858
Jerome B. Styron	10 Dec 1860
R. Styron, CSA	1 Jun 1861
CSA office discontinued	12 Aug 1861
Homer W. Styron	6 Jun 1866
D. W. Ballance	28 May 1869
Discontinued	9 Aug 1869
To Dare County	

## HYDE COUNTY

### Hyde C.H.

(Hyde)

John Gayland	3 Sep 1800
Francis Kipps Moore	by 1 Jul 1802
Discontinued	ca 1810

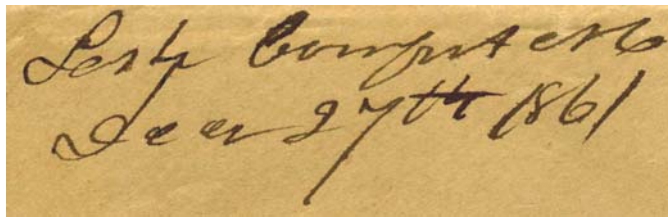
### Lake Comfort

(Hyde)

Reuben Benson	3 Feb 1851
Reuben Benson, CSA	16 Jul 1861
Marshall A. Swindell, CSA	24 Mar 1862
CSA office closed on or before	30 Apr 1865
Federal office discontinued	11 Dec 1866
James McGowan	22 Jan 1867
Benjamin F. Spencer	17 Dec 1867
Edward H. Jones	4 Jun 1874
Robert Jennett	27 Nov 1877
James M. Benson	3 Apr 1878
George W. Brown	15 Dec 1880
Thomas R. Benson	2 Oct 1883
Jesse M Caffee	3 Apr 1888
William J. Sears	11 Aug 1891
William W. Bonner	9 Jun 1893
William W. Boomer	16 Sep 1893
George W. Weston	29 Jul 1895
Zacheus Benson	15 May 1901
Henry L. McGowan	6 Jun 1901
Discontinued	31 Oct 1904
Mail to Swanquarter	



Manuscript  
30 Jan 1854



Manuscript  
27 Dec 1861

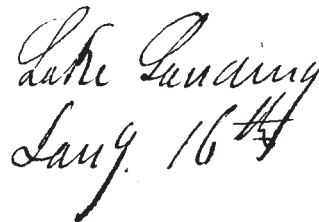


Type 1  
27.5 mm Black  
31 May 1894  
27 Mar 1900

### Lake Landing, name changed from Mattamuskeet

(Hyde)

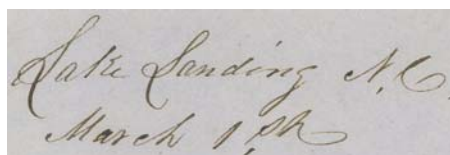
Robert M. Blackwell	13 Jun 1821
Hugh Jones	5 Jul 1823
Daniel Murray	2 Feb 1827
Annaias Sadler	4 Jan 1832
George H. Sheldon	17 Mar 1835
Thomas R. Gibbs	15 Sep 1841
Selby Watson	2 Oct 1845
Daniel M. Watson	8 Apr 1858
Selby Watson	21 Dec 1858
S. Watson, CSA	1 Jun 1861
William H. Buffalo, CSA	16 Sep 1861
CSA office closed on or before	30 Apr 1865
Selby Watson	19 Apr 1866
Bannister Midyett	13 Aug 1867
Daniel M. Watson	18 May 1876
Isabella G. Pigott	23 Nov 1881
Dayton K. Midyett	3 May 1882
William P. Midyett	9 Feb 1883
S. M. Mann	16 Feb 1886
Daniel M. Watson	29 Mar 1886



Manuscript  
14 Mar 1821  
12 May 1834



Manuscript  
1 Mar 1838  
11 Apr 1846



Manuscript  
1 Mar 185x

# HYDE COUNTY

## Lake Landing (Cont.)

(Hyde)

Henry S. Boomer	2 Jun 1886
Daniel M. Watson	22 Mar 1894
Lawrence L. Gibbs	21 Mar 1898
Claudius A. Mann	11 Sep 1900
Samuel A. Windley	26 Mar 1903
William H. Jones	15 Aug 1906
John L. Mann	3 Dec 1907
Norfleet L. Mann	2 Feb 1921
George D. Midyett, Acting	26 Nov 1921
George D. Midyett	6 Jun 1922
Eunice T. Midyett, Acting	2 Jan 1930
James E. Swindell	21 May 1930
Norfleet L. Mann, Acting	26 Feb 1936
Norfleet L. Mann	24 Jun 1936
William W. Watson, Acting	1 May 1943
William W. Watson	31 Oct 1944
Discontinued	31 Jul 1955
Mail to Engelhard	



Type 1  
27 mm Black  
11 Nov 187x



Type 2  
27.5 mm Black  
18 Mar 1887  
4 Mar 1900



Type 3  
29 mm Black  
Metal Duplex Type H2  
14 Oct 1901  
29 Sep 1906



Type 4  
31 mm Black  
1906 Type A/1 4-Bar  
14 Dec 1908



Type 5  
31 mm Black  
1908 Type A/2 4-Bar  
4 Oct 1911  
17 Apr 1920



Type 6  
33.5 mm Black  
1931 Type C/2 4-Bar  
30 Apr 1936

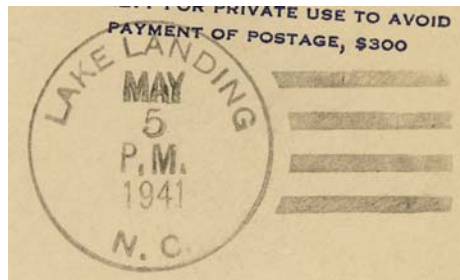
# HYDE COUNTY

## Lake Landing (Cont.)

(Hyde)



Type 7  
35 mm Black  
Non-standard 4-Bar  
24 Nov 1936



Type 8  
32.5 mm Black  
1936 Type F/1 4-Bar  
5 May 1941



Type 9  
33 mm Black  
1936 Type F/1 4-Bar  
24 Nov 1949  
29 Feb 1952



Type 10  
33 mm Black  
1936 Type F/1 4-Bar  
27 Jul 1954

33 mm Magenta  
30 Jul 1955



Type 11  
29.5 mm Magenta  
30 Jul 1955

## HYDE COUNTY

### Log House Landing

(Hyde)

Major John Clark            13 Dec 1815  
David Harvy                 28 Dec 1819  
Annexed to Beaufort County    1819

### Makleyville

(Hyde)

Thomas H. Moffett            6 Aug 1877  
Metrah Makley                7 May 1885  
Millbourn O. Webster        10 Aug 1889  
Arthur D. Tanfield            15 Nov 1892  
James M. Edwards            12 May 1902  
Discontinued                 31 Jan 1906  
Mail to Scranton



Type 1  
28 mm Black  
2 Sep 1891



Type 2  
28 mm Black  
13 Dec 1897

### Mattamuskeet

(Hyde)

Hugh Jones                    1 Jul 1811  
Abner Pasteur                 2 Sep 1813  
Nehemiah Benson             30 Mar 1818  
Robert Blackwell             14 Apr 1819  
Name changed to **Lake Landing**    13 Jun 1821

### Middle Creek

(Hyde)

Benjamin Sanderson            2 Feb 1827  
George Sheldon                10 Nov 1827  
Name changed to **Middletown**        ca 1827

# HYDE COUNTY

**Middletown, Middleton**, name changed from Middle Creek

(Hyde)

George Sheldon	10 Nov 1827
James Adams	30 Jun 1829
Henry Spencer	25 Nov 1842
William F. Higson	6 Jan 1843
Z. W. Barrow	26 Aug 1845
Benjamin Saunderson, Sr.	28 Jan 1846
Josiah V. Blackwell	2 Mar 1846
Lorenzo D. White	11 Jun 1851
Lorenzo D. White, CSA	31 Jul 1861
CSA office closed on or before	30 Apr 1865
John A. Swayer	19 Apr 1866
L. D. White	19 Dec 1866
Samuel Midyett	13 Aug 1867
Godfrey Waterman	23 Jun 1868
Seth B. Young	1 Feb 1869
Discontinued	20 May 1870
James H. Young	30 Mar 1871
William T. McKinney	14 Jun 1881
Discontinued	5 Sep 1881
William T. McKinney	4 Nov 1881
Robert S. Burrus	19 Feb 1889
Claudius A. Mann	8 Nov 1919
Isabelle Gibbs, Acting	12 May 1927
Isabelle Gibbs	27 Oct 1927
Claudius A. Mann, Acting	21 Jul 1930
Myra G. Mann	3 Jan 1931
Order rescinded	22 Jan 1931
Hugh Cecil McKinney	8 Jan 1932
Annie P. McKinney, Acting	7 Oct 1942
Annie P. McKinney	26 Feb 1943
Discontinued	31 Jul 1955
Mail to Engelhard	

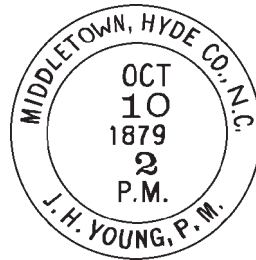
*Middleton N.C.*  
*28, Feb.*

Manuscript  
21 Sep 1831  
28 Sep 1850

**PAID**  
**5**



Type 1  
29 mm Red  
21 Jun 1851  
17 Aug 185x



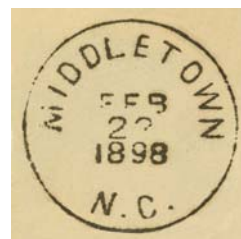
Type 2  
33.5 mm Violet  
10 Oct 1879



Type 3  
32.5 mm Black  
18 Mar 1884  
30 Jan 1885



Type 4  
27.5 mm Black  
9 Jun 1888  
7 Oct 189x



Type 5  
28 mm Black  
16 Feb 1898  
24 Apr 1901

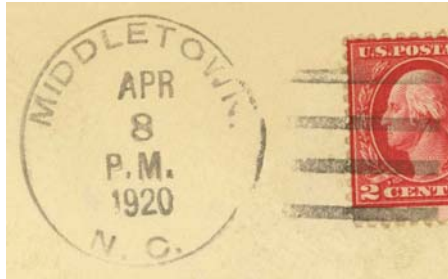
# HYDE COUNTY

Middletown, Middleton (Cont.)

(Hyde)



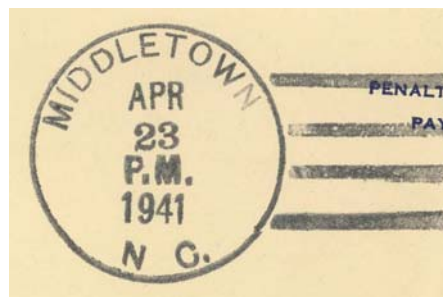
Type 6  
28.5 mm Black  
Doane Type 2-2  
14 Feb 1905  
31 Oct 1912



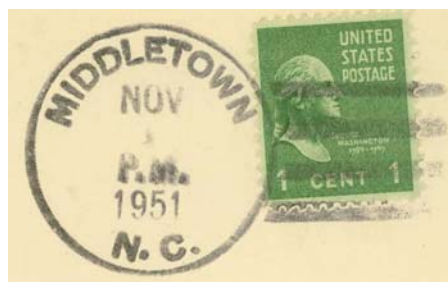
Type 7  
32.5 mm Black  
1910 Type B 4-Bar  
8 Apr 1920



Type 8  
32.5 mm Black  
1931 Type C/2 4-Bar  
25 Sep 1936



Type 9  
34 mm Black  
1936 Type F/1 4-Bar  
23 Apr 1941



Type 10  
33 mm Black  
1936 Type F/1 4-Bar  
1 Nov 1951  
30 Jul 1955

## HYDE COUNTY

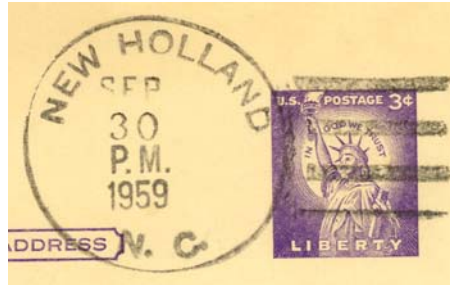
### New Holland

(Hyde)

Harry Graves	19 Jul 1916
Stephen J. Leveroni	16 Jan 1917
Samuel W. Frescoln (declined)	10 Nov 1917
Harold Smith	29 May 1918
Alice Jones, Acting	15 Aug 1929
Alice Jones	20 Mar 1930
Miss Sydney Weston, Acting	17 Aug 1933
Miss Sydney Weston	15 Nov 1933
Miss Willie G. Weston, Acting	30 Nov 1954
Miss Willie G. Weston	29 Nov 1958
Discontinued	30 Sep 1959



Type 1  
33 mm Black  
1936 Type F/1 4-Bar  
21 Apr 1942  
11 Aug 1951



Type 2  
34 mm Black  
1936 Type F/1 4-Bar  
1 Sep 1958  
30 Sep 1959



Type 3  
30.5 mm Magenta  
30 Sep 1959

### Ocracoke, annexed from Carteret County

(Hyde)

William Woodard	6 Jan 1845
William H. Howard	31 Mar 1846
John Pike	31 Dec 1846
William Howard, Jr.	11 Feb 1847
William H. Howard	8 Mar 1847
Daniel Tolson	3 Jul 1855
Daniel Tolson, CSA	6 Jul 1861
CSA office closed on or before	30 Apr 1865
Abner B. Howard	6 Jun 1866
Discontinued	2 Apr 1868
Abner B. Howard	22 Nov 1869
Sidney E. Howard	24 Jan 1873
Mrs. Sidney E. Tolson	25 Mar 1875
Edward Farrow	20 May 1875
James S. McWilliams	10 Jul 1877
Michael L. Piland	28 Feb 1888
Edward Farrow	11 Jan 1897
William E. Howard	28 Aug 1900
Thomas W. Howard	21 Oct 1902

*Ocracoke News  
Dec 20*

Manuscript  
18 Oct 1845  
2 Dec 1848



Type 1  
28 mm Black  
4 Dec 1888  
12 Sep 1890

# HYDE COUNTY

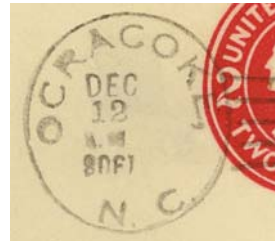
## Ocracoke (Cont.)

(Hyde)

Elizabeth A. O'Neal, Acting	1 May 1941
Elizabeth A. O'Neal	12 Nov 1941
Elizabeth O. Howard (marriage)	17 Aug 1942
William A. Sexton Jr. Officer-In-Charge	23 Mar 1972
Louis W. Whitman Officer-In-Charge	14 Nov 1972
Charles R. Bulla Officer-In-Charge	9 Feb 1973
Charles R. Bulla	2 Jun 1973
James R. Littleton Officer-In-Charge	2 Sep 1975
Mrs. Selina B. Goodwin Officer-In-Charge	12 Sep 1975
Howard S. Tolson Officer-In-Charge	15 Mar 1976
Mrs. Selina B. Goodwin Officer-In-Charge	22 Nov 1976
Junior W. Hill	21 May 1977
Mrs. Anita F. Fletcher Officer-In-Charge	9 Feb 1979
Mrs. Anita F. Fletcher	19 May 1979
Deborah B. Burrus Officer-In-Charge	24 Jun 1993
Ruth G. Jordan	11 Dec 1993
Celeste W. Brooks	2 Apr 2005
Anthony Dale Mutro Officer-In-Charge	31 Mar 2010



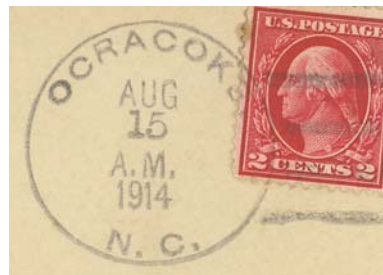
Type 2  
28 mm Black  
6 Sep 1897



Type 3  
28 mm Black  
Doane Type 1-?  
12 Dec 1908



Type 4  
32 mm Black  
1908 Type A/2 4-Bar  
24 Aug 1911



Type 5  
32.5 mm Black  
1910 Type B 4-Bar  
15 Aug 1914  
14 Sep 1921



Type 6  
31 mm Black  
1925 Type C/1 4-Bar  
28 Apr 1930  
5 Oct 1933

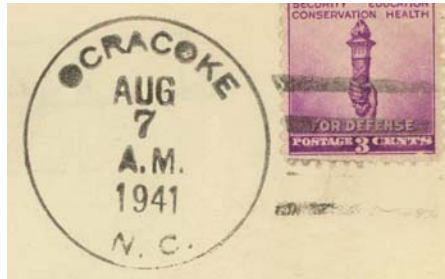


Type 7  
33.5 mm Black  
1931 Type C/2 4-Bar  
26 May 1936  
12 Oct 1937

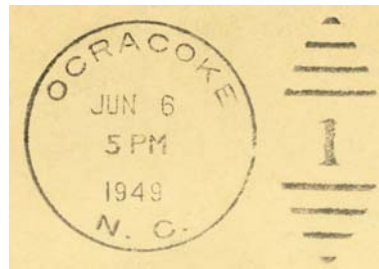
# HYDE COUNTY

Ocracoke (Cont.)

(Hyde)



Type 8  
33 mm Black  
1936 Type F/1 4-Bar  
7 Aug 1941  
8 Feb 1943



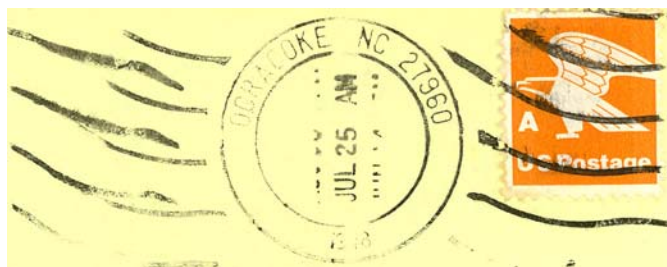
Type 9  
30.5 mm Black  
Metal Duplex Type ?  
6 Jun 1949  
9 Oct 1965



Type 10  
33.5 mm Black  
1963 Type F/2 4-Bar (27960)  
26 Apr 1972



Type 11  
32.5 mm Black  
1963 Type F/2 4-Bar (27960)  
2 Mar 1973  
25 Nov 1976

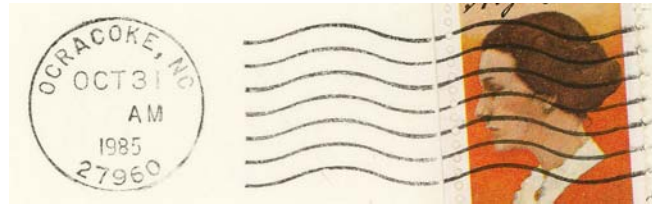


Type 12  
32 mm Black  
Hanley hand-held roller (27960)  
25 Jul 1978

# HYDE COUNTY

Ocracoke (Cont.)

(Hyde)



Type 13  
23 mm Black  
International Machine  
Type ATS/z 2721 (27960)  
26 Jan 1979  
21 Oct 1991



Type 14  
31.5 mm Magenta  
1963 Type F/2 4-Bar (27960)  
15 Mar 1983



Type 15  
28 mm Magenta  
3 Jul 1986  
27 Apr 1987



Type 16  
35 mm Black  
1963 Type F/2 4-Bar (27960)  
6 Aug 1986  
30 Jan 1988



Type 17  
33.5 mm Black  
1963 Type F/2 4-Bar (27960)  
21 Oct 1991  
23 Sep 1993

HYDE COUNTY

Ocracoke (Cont.)

(Hyde)



Type 18  
35 mm Black  
Self-Inking Postmarker  
Type 3A (27960)  
25 Oct 1996  
30 Jan 2001



Type 19  
30.5 mm Red  
Self-Inking Postmarker (27960)  
30 Jan 2001



Type 20  
35 mm Black  
Self-Inking Postmarker  
(27960-9998)  
31 Jan 2007



Type 21  
30 mm Red  
Self-Inking Postmarker  
(27960-9998)  
31 Jan 2007

Branch Station Cancels

Navy 10094 (Naval Amphibious Training Base)



Type 1  
29.5 mm Magenta (?)  
7 Jul 1943

## HYDE COUNTY

### Ponzer

(Hyde)

James H. Manning	1 Aug 1923
James F. Manning, Acting	20 Aug 1929
James F. Manning	7 Sep 1929
Mrs. Bert Smithwick, Acting	3 Mar 1942
Mrs. Bert Smithwick	14 Aug 1942
Rosalind R. Smithwick, Acting	31 Dec 1951
Rosalind R. Smithwick	14 May 1952
Discontinued	31 Jul 1955

Mail to Belhaven, Beaufort County



Type 1  
32.5 mm Black  
1936 Type F/1 4-Bar  
22 Feb 1944



Type 2  
33 mm Black  
1936 Type F/1 4-Bar  
22 Mar 1950  
30 Jul 1955

### Rose Bay, Rosebay

(Hyde)

Gamaliel Swindell	2 Aug 1872
Discontinued	2 Sep 1875
O. C. Swindell	14 Aug 1878
William Carawan	26 Feb 1879
Oliver Swindell	24 May 1882
Discontinued	7 Jun 1882
Re-established as <b>Rosebay</b>	
Gamaliel Swindell	23 Dec 1897
Discontinued	31 Dec 1901

Papers to Swanquarter

### Scranton

(Hyde)

John C. Bishop	23 Jan 1890
Francis M. Bishop	4 Nov 1896
James H. Wahab (declined)	11 Oct 1900
Zebulon V. Hayes (declined)	6 Mar 1901
Allen B. Credle	11 Jul 1901
Lillian Spencer	4 Nov 1919
Walter C. Brinson, Acting	7 Oct 1926
Walter C. Brinson	15 Dec 1926
William A. Bishop, Acting	1 Jul 1943
Frank W. Fortescue	6 Nov 1945
Mary E. Credle, Acting	30 Jun 1957
Walter E. Bishop	5 Sep 1958
Carolyn M. Dunbar Officer-In-Charge	1 Sep 1992
Carolyn M. Dunbar	26 Nov 1994
Sharon D. Williams Officer-In-Charge	8 Feb 2007
Sharon D. Williams	8 Dec 2007
Emmett D. Sadler Jr. Officer-In-Charge	20 Oct 2008



Type 1  
28 mm Black  
7 Jul 1896

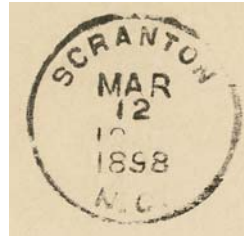


Type 2  
28 mm Black  
8 Dec 1897

# HYDE COUNTY

Scranton (Cont.)

(Hyde)



Type 3  
28 mm Black  
12 Mar 1898



Type 4  
28.5 mm Black  
Metal Duplex Type H2  
28 Nov 1901



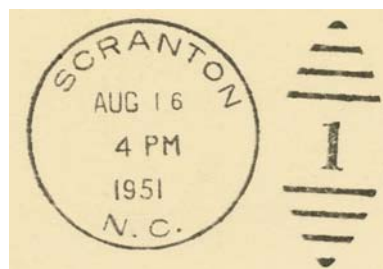
Type 5  
28 mm Black  
Doane Type 2-2  
1 May 1907  
25 Oct 1907



Type 6  
31.5 mm Black  
1906 Type A/1 4-Bar  
17 Jun 1911  
5 Apr 1916



Type 7  
33 mm Black  
1936 Type F/1 4-Bar  
9 Mar 1943  
16 Sep 1944



Type 8  
30.5 mm Black  
Metal Duplex Type ?  
9 Mar 1950  
27 Jan 1958

HYDE COUNTY

Scranton (Cont.)

(Hyde)



Type 9  
29.5 mm Magenta  
16 Aug 1951



Type 10  
33.5 mm Black  
1963 Type F/2 4-Bar (27875)  
4 May 1967  
22 Aug 1989



Type 11  
37 x 32 mm Black  
Self-Inking Postmarker (27875)  
13 May 1999  
21 Feb 2007

Slade Creek

(Hyde)

William Permele	15 Jun 1813
William Cutchen	1 Jan 1815
Discontinued	ca 1815

Slades Creek

(Hyde)

Charles B. Russell	15 Aug 1844
Discontinued	10 May 1849

*Slades Creek  
Jun 13*

Manuscript  
23 Mar 1845  
15 Apr 1848

## HYDE COUNTY

### Sladesville

(Hyde)

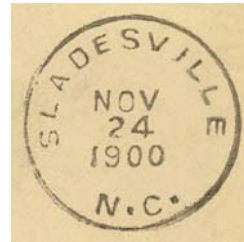
James B. LaRoque	16 Aug 1849
Joseph B. Hodges	25 Nov 1850
Zacheus A. G. Bell	11 Mar 1852
Alban W. Silverthorn	18 Oct 1853
Discontinued	23 Feb 1855
Alban W. Silverthorn	30 Mar 1855
John E. Fortiscue	11 Mar 1856
Stephen D. Owens	22 Oct 1857
Discontinued	20 Jul 1860
David A. Dillon	25 Sep 1860
David A. Dillon, CSA	1 Jun 1861
CSA office discontinued	6 Jul 1861
Eliza Dillon	19 Apr 1866
Caroline Tooly	13 Feb 1867
Petrona Conklin	28 May 1869
Reuben Harris	19 Nov 1869
Henry Gibbs	2 Mar 1870
John T. B. Hoover	21 Apr 1873
Dallas Wahab	22 Oct 1874
Thomas R. Jarvis	2 Oct 1879
Charles W. Thomas	18 Oct 1880
Thomas R. Jarvis	21 Mar 1884
George G. Newman	3 Dec 1889
Discontinued	14 Oct 1905
Mail to Scranton	

*Sladesville no. 22  
21. October 1849*

Manuscript  
21 Oct 1849  
8 Jun 1852



Type 1  
28 mm Black  
13 Oct 1890



Type 2  
28.5 mm Black  
24 Nov 1900

### Stencil House

(Hyde)

John G. Harris	25 Jun 1874
Discontinued	22 Sep 1884
Papers to Fairfield	

### Swan Quarter, Swanquarter, name changed from Swindell

(Hyde)

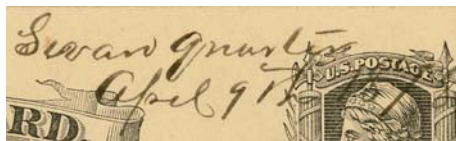
Green Bridgman	14 Jan 1839
Zachariah Gibbs	14 Mar 1839
William O'Neal	5 Oct 1842
Thomas F. Credle	30 Dec 1842
Elisha B. Credle	18 Dec 1856
George Credle	13 Dec 1859
James C. Ballance	4 Jun 1860
James C. Ballance, CSA	6 Jul 1861
CSA office closed on or before	30 Apr 1865
William H. Pierce	19 Apr 1866
Lyndon E. Swindell	1 Aug 1867
Mary Sears	19 Mar 1868
Thomas E. Mace	22 Apr 1868
George V. Credle	3 Apr 1873
Bryan G. Credle	30 Mar 1876

*Swan Quarter }  
Feb'y 12<sup>th</sup> 1842*

Manuscript  
16 Oct 1841  
8 Feb 1853

*Swan Quarter  
March 8. 1858*

Manuscript  
12 Aug 1856  
9 Oct 1858



Manuscript  
9 Apr 1878

# HYDE COUNTY

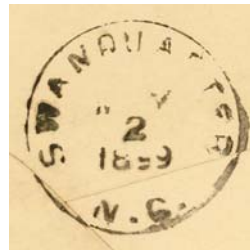
## Swan Quarter, Swanquarter (Cont.)

(Hyde)

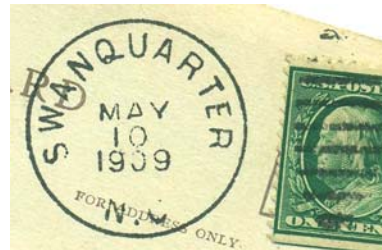
George W. Swindell	30 Jan 1882
Alexander Berry	7 May 1883
Sallie E. Credle	3 Oct 1883
George W. Swindell	6 Dec 1883
Jones M. Spencer	19 Jan 1885
Greely Brinn	28 May 1890
Alexander Berry	30 Dec 1890
Name changed to <b>Swanquarter</b>	28 Jun 1894
George V. Credle	28 Jun 1894
William T. Berry	12 May 1898
Joseph A. Berry	2 Jan 1901
Alexander Berry	26 Mar 1904
Margaret W. Mann	23 May 1914
Margaret W. Swindell (marriage)	no date
R. B. Watson, Acting	17 Oct 1919
William Watson	26 Jan 1920
Alexander B. Berry	24 Jan 1924
Louella Swindell, Acting	27 Jun 1933
Louella Swindell	13 Jun 1934
Hiatt B. Cahoon, Acting	31 Oct 1963
Thomas W. Cahoon	26 Aug 1965
Bryan L. Hollowell Officer-In-Charge	3 Sep 1992
Kay C. Emory Officer-In-Charge	13 Oct 1992
Cathy G. Sisk	6 Feb 1993
Carolyn M. Dunbar Officer-In-Charge	9 Sep 1998
Wendy W. Baker Officer-In-Charge	19 Jan 1999
Celeste W. Brooks	6 Nov 1999
Sharon Denise Williams Officer-In-Charge	16 May 2005
Sharon Denise Williams	25 Jun 2005
Melinda (Sawyer) Boyd Officer-In-Charge	9 Feb 2007
Damaris J. Campbell	2 Aug 2008
Celeste W. Brooks Officer-In-Charge	31 Mar 2010



Type 1  
24 mm Black  
22 Sep 1880



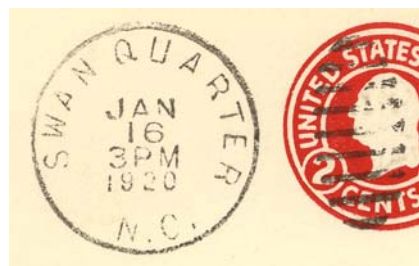
Type 2  
28 mm Black  
4 May 1894  
2 Nov 1899



Type 3  
29 mm Black  
Metal Duplex Type H2  
2 Oct 1900  
24 Jan 1913



Type 4  
31.5 mm Black  
1910 Type B 4-Bar  
2 Oct 1914



Type 5  
30 mm Black  
Metal Duplex Type H2  
16 Jan 1920  
9 Dec 1929



Type 6  
30.5 mm Black  
Metal Duplex Type E2  
15 Oct 1934  
1 Mar 1950

# HYDE COUNTY

## Swan Quarter, Swanquarter (Cont.)

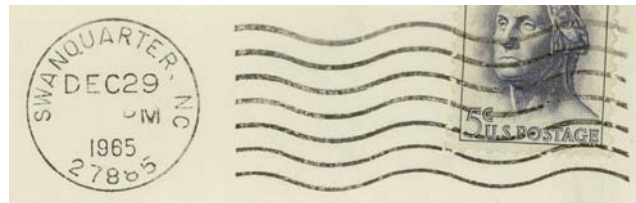
(Hyde)



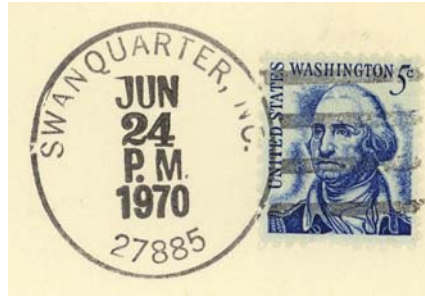
Type 7  
28.5 mm Magenta  
9 Apr 1940



Type 8  
22.5 mm Black  
International Machine  
Type AT/S 2711  
15 May 1944  
4 Jun 1965



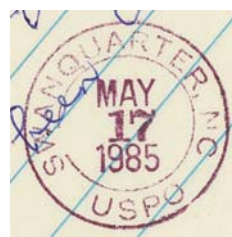
Type 9  
22.5 mm Black  
International Machine  
Type AT/S/z 2723 (27885)  
10 Feb 1967  
10 Nov 1986



Type 10  
33 mm Black  
1963 Type F/2 4-Bar (27885)  
15 Feb 1966  
24 Jun 1970



Type 11  
31.5 mm Black  
1963 Type F/2 4-Bar (27885)  
20 Aug 1973  
17 Jul 1992



Type 12  
27 mm Magenta  
17 May 1985

# HYDE COUNTY

Swan Quarter, Swanquarter (Cont.)

(Hyde)



Type 13  
34.5 mm Black  
Self-Inking Postmarker (27885)  
11 Mar 1998  
29 Nov 2000



Type 14  
31 mm Red  
Self-Inking Postmarker (27885)  
29 Jun 2000  
12 Mar 2007

Rural Station Cancels  
New Holland Rural Station  
1 Oct 1959  
31 Dec 1975



Type 1  
32 mm Black  
2 Nov 1959  
21 Jan 1963



Type 2  
34 mm Black (27885)  
14 Feb 1966  
10 Oct 1967



Type 3  
28.5 mm Magenta  
9 Apr 1966  
12 Jun 1972

HYDE COUNTY

Swan Quarter, Swanquarter (Cont.)

(Hyde)

Receiving datestamp



Type R1  
29.5 mm Black  
1 May 1907  
19 May 1911

Swindell (1), Swindells

(Hyde)

John L. Swindell 6 Feb 1830  
Name changed to Swan Quarter 14 Jan 1839

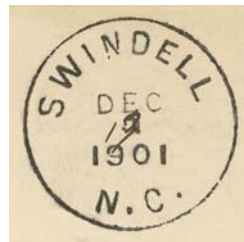
*Swindells  
7 September*

Manuscript  
16 Mar 1831  
13 Jun 1837

Swindell (2)

(Hyde)

Albin B. Swindell 20 Nov 1897  
Discontinued 31 Dec 1901  
Papers to Swanquarter



Type 1  
28 mm Black  
19 Dec 1901

Woodstock

(Hyde)

Seth Hovey 3 Sep 1800  
Annexed to Beaufort County 1819

*Woodstock N.C.*

Manuscript  
1 Nov 1800  
11 Jul 1805

# HYDE COUNTY

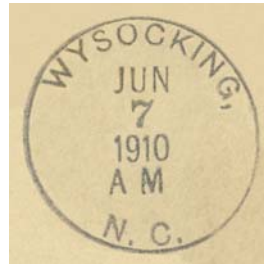
## Wysoking, Wysocking

(Hyde)

Samuel Brooks 28 May 1858  
Discontinued 1 Nov 1860  
Re-established as **Wysocking**  
Henry S. Boomer 2 Nov 1900  
George J. Watson 3 May 1906  
Henry S. Boomer 24 Mar 1908  
George J. Watson 5 Jan 1909  
Discontinued 15 Jul 1913  
Mail to Lake Landing



Type 1  
28.5 mm Black  
26 Mar 1901  
11 Dec 1903



Type 2  
31 mm Black  
1906 Type A/1 4-Bar  
7 Jun 1910