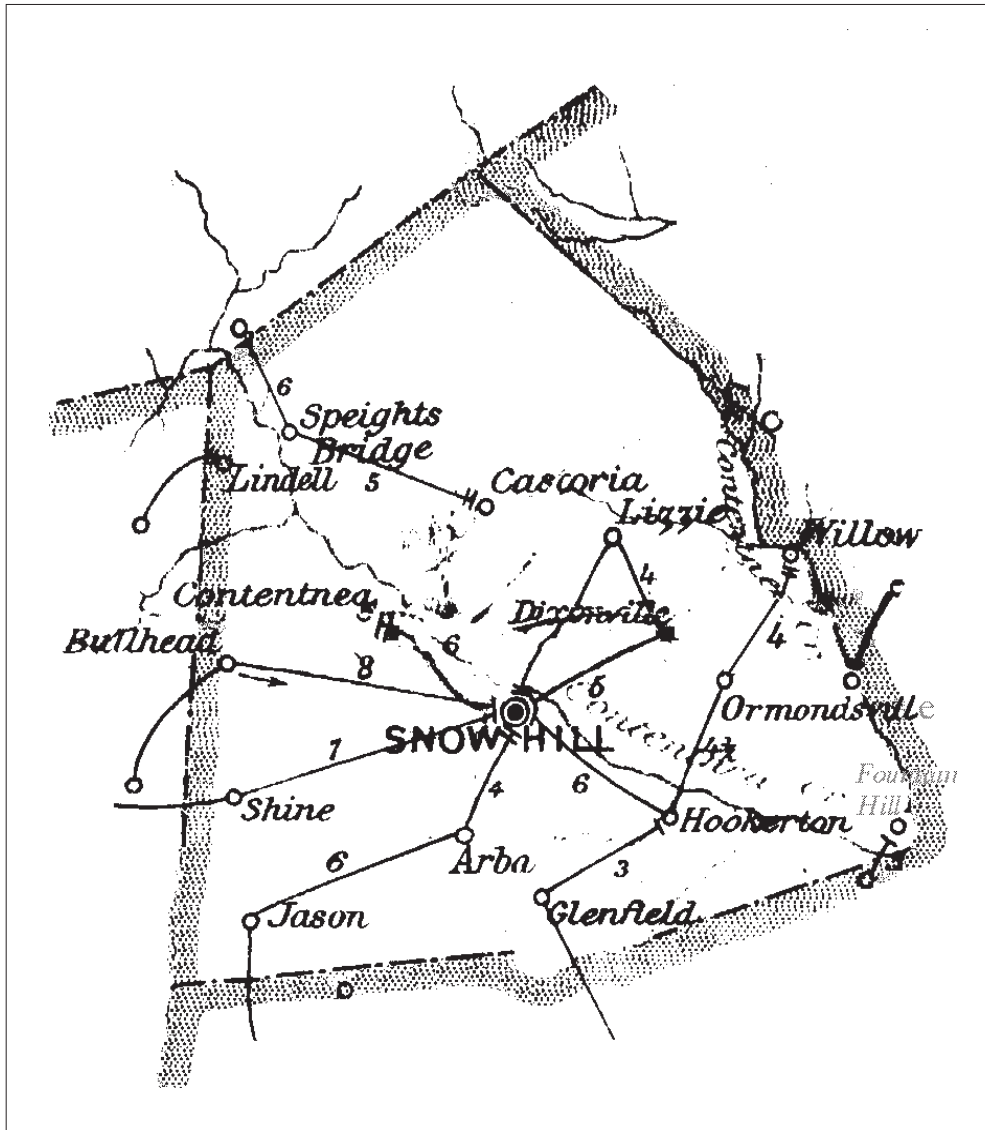


GREENE COUNTY

Formed as Glasgow in 1791 from Dobbs,
Name Changed to Greene in 1799

Number of Post Offices - 30
Number with postmarks known - 16



GREENE COUNTY

Appletree

(Greene)

Robert W. Taylor, Jr.	19 Jun 1886
Haywood Edmundson	1 Feb 1889
Will R. Bryan, Jr.	22 Jun 1891
Charles D. West	5 May 1896
Name changed to Lindell	11 Feb 1898

Arba

(Greene)

Thomas H. Hill	14 Jul 1899
Albert A. Hill	28 Jan 1904
Discontinued	15 Oct 1913
Mail to Snow Hill	

Asa

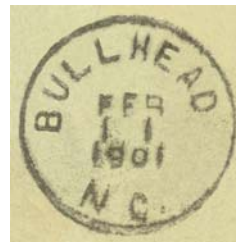
(Greene)

Levi J. H. Mewborn	22 Mar 1900
Discontinued	15 Sep 1900
Papers to Jason	

Bull Head, Bullhead

(Greene)

James J. Edmundson	2 May 1856
Discontinued	25 Jun 1858
John J. Edmundson	30 Jul 1858
Discontinued	15 Aug 1859
Benjamin F. McKeel	3 Aug 1877
Richard D. S. Dixon	25 Mar 1878
Christopher C. Pope	5 Dec 1878
Name changed to Bullhead	13 Jun 1895
Columbus C. Pope	13 Jun 1895
John R. Mewborn	11 Sep 1900
Alexander Taylor	1 Feb 1902
Bunion J. Baker	21 Jan 1903
Discontinued	30 Mar 1907
Mail to Snow Hill	



Type 1
28.5 mm Black
11 Feb 1901
22 Dec 1904

GREENE COUNTY

Carolina Seminary

(Greene)

William T. Dixon	15 Sep 1859
John J. Ormand	17 Jan 1861
J. J. Ormand, CSA	4 Jul 1861
Samuel W. Ormand, CSA	Bibliog. #19
CSA office closed on or before	30 Apr 1865
William T. Dixon	4 Dec 1865
George C. Hines	16 Jul 1867
Discontinued	2 Mar 1869
Mary J. Edwards	21 Feb 1870
Discontinued	30 Aug 1872

Castoria

(Greene)

William E. Powell	28 Jul 1884
Titus W. Carr	16 Apr 1901
Charles H. Rasberry	30 Sep 1903
Charles R. Harper	23 Jan 1904
Discontinued	15 Dec 1908
Mail to Walstonburg	



Type 1
38 x 23 mm Black
27 Nov 1889



Type 2
27.5 mm Black
17 Dec 1890
5 Apr 1895

Contentnea

(Greene)

Isaiah Rawles	15 Jun 1876
Discontinued	28 Jun 1876
Isaiah Rawles	13 Aug 1877
Discontinued	4 Jun 1884
Edward M. Lehman	18 Sep 1889
Frances Dixon	22 Dec 1891
Ida W. Dail	6 Jun 1896
Lonnie J. McKeel	21 Mar 1898
Benjamin P. Newborn	6 Oct 1902
Discontinued	31 Jan 1903
Mail to Snow Hill	



Type 1
27.5 mm Black
6 May 1890

GREENE COUNTY

Cotton Valley

(Greene)

Charles Worthington 29 Mar 1870
Discontinued 9 Jul 1872

Cotton Valley N.C.

Manuscript
19 July 1870

Dixonville

(Greene)

Doremus W. Dixon 22 Mar 1898
Discontinued 31 Jan 1903
Papers to Snow Hill



Type 1
28.5 mm Black
11 Apr 1900
5 May 1900

Fieldsborough, Fieldboro

(Greene)

Henry C. Turnage 26 Dec 1879
Name changed to **Fieldboro** 14 Apr 1892
William R. Fields 14 Apr 1892
Lillie West 8 Jan 1894
Discontinued 10 Feb 1899
Papers to Dongola, Pitt County



Type 1
28.5 mm Black
15 Oct 1894

Fort Run

(Greene)

William H. B. Taylor 12 Jun 1846
Discontinued 13 Jun 1849

GREENE COUNTY

Fountain Hill

(Greene)

Willis Dixon	11 Mar 1850
Discontinued	18 May 1854
Franklin Johnston	10 Dec 1872
Charles Edwards	3 Dec 1877
Samuel W. Brooks	11 Jul 1879
Frank Graddy	4 Mar 1880
Joseph Dixon	7 Dec 1880
Charles Edwards	21 Dec 1880
Needham Cannady	17 Jan 1881
Charles Edwards	26 Jan 1881
S. W. Brooks	17 Jan 1883
Elias L. Hazelton	7 Mar 1883
Nannie Lawrence	15 Jan 1890
De Wooding Wood	20 Jun 1892
Edward W. Jackson	18 Jan 1899
Discontinued	30 Sep 1903

Papers to Grifton, Pitt County



Type 1
28.5 mm Black
13 Oct 1900
4 Apr 1901

Glenfield

(Greene)

Henry A. Hooker	18 May 1888
Discontinued	31 Mar 1903

Papers to Snow Hill

Hardeesville

(Greene)

Henry M. Hardee	11 Aug 1892
James H. Savage	25 May 1897
Discontinued	30 Sep 1899

Mail to Ormondsville

Hookerston, Hookerstown, Hookerton

(Greene)

William Hooker	29 May 1819
John Patrick	19 May 1826
John H. Freeman	24 Jan 1829
Spelling changed to Hookerstown	
Nathan Hooker	31 Jan 1830
Roderic Powell	8 Mar 1837
William Herring	4 Nov 1837
Jesse W. Moore	9 Feb 1839
Isaac Jordan	2 Sep 1856
Spelling changed to Hookerton	
Doct. A. Spivey	18 Dec 1860

*Hookerton N.C.
May 4th 1843*

Manuscript
15 Aug 1839
16 Nov 1850

Free. J. Moore P. Marked

Postmaster frank
4 May 1843

GREENE COUNTY

Hookerston, Hookerstown, Hookerton (Cont.)

(Greene)

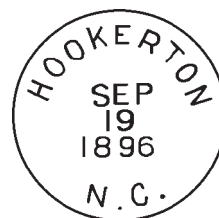
D. A. Spivey, CSA	3 Jul 1861
Asa McCoy, CSA	6 Jan 1862
John M. Patrick, CSA	Bibliog. #19
CSA office closed on or before	30 Apr 1865
J. S. Smith	4 Dec 1865
C. C. Stilley	23 Mar 1866
William J. Taylor	2 Oct 1867
John Grizard	11 Mar 1868
Francis M. Mosely	12 Jan 1871
John Patrick	11 Feb 1878
Erastus A. Parker	17 Aug 1885
David V. Dixon	27 Jan 1888
John R. Patrick	31 Oct 1889
John J. Edwards	16 Oct 1893
William O. Dixon	5 Oct 1897
Norville F. Palmer	13 Apr 1914
Eugene S. Edwards, Acting	30 Dec 1936
Eugene S. Edwards	17 Jul 1937
Nellie Brann, Acting	31 Dec 1951
Joshua P. Seymore, Acting	30 Jun 1953
Joshua P. Seymore	18 Mar 1954
Nellie B. Brann, Acting	2 Jul 1960
William B. Jenkins	31 Aug 1962
Richard Earl Wood, Acting	31 Mar 1964
Hardy L. Vause	29 Sep 1965
Jennifer G. Vandiford	9 Feb 1980
Wesley Smith Officer-In-Charge	8 Sep 1986
JoAnn G. Sutton	20 Dec 1986
Paul Perry Officer-In-Charge	3 Jan 2008
Rita M. Stallings	15 Mar 2008

Hookerton, N.C. 3
Apr. 27 3

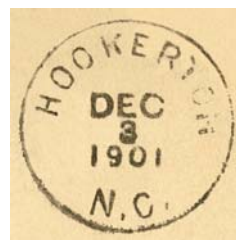
Manuscript
27 Apr 1863



Type 1
31.5 mm Black
22 Mar 185x



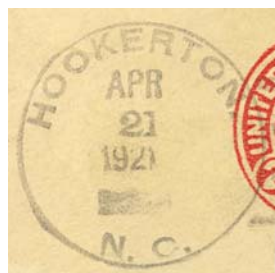
Type 2
28.5 mm Black
19 Sep 1896
8 Feb 1897



Type 3
28 mm Black
3 Dec 1901



Type 4
30 mm Black
Metal Duplex Type H2
23 Dec 191x

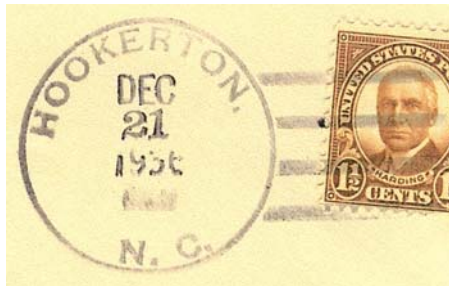


Type 5
32.5 mm Black
1910 Type B 4-Bar
21 Apr 1921

GREENE COUNTY

Hookerston, Hookerstown, Hookerton (Cont.)

(Greene)



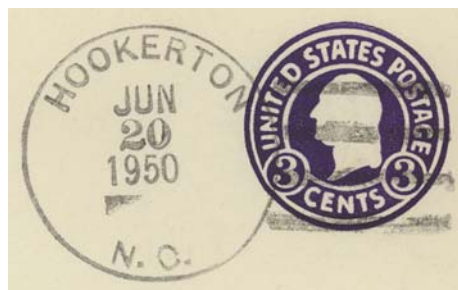
Type 6
33.5 mm Black
1931 Type C/2 4-Bar
21 Dec 1936



Type 7
29 mm Black
4-Bar Mimic
9 Mar 1944



Type 8
32.5 mm Black
1936 Type F/1 4-Bar
26 Feb 1945



Type 9
34 mm Black
1936 Type F/1 4-Bar
11 Feb 1950
20 Jun 1950

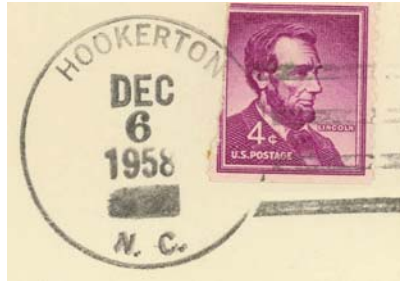


Type 10
34 mm Black
1936 Type F/1 4-Bar
5 Mar 1952

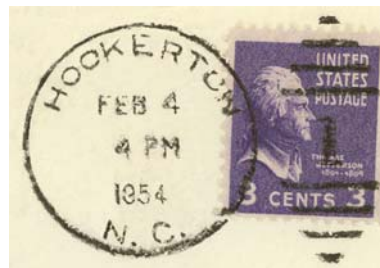
GREENE COUNTY

Hookerston, Hookerstown, Hookerton (Cont.)

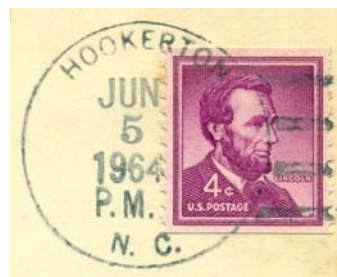
(Greene)



Type 11
33 mm Black
1936 Type F/1 4-Bar
9 Jan 1953
6 Dec 1958



Type 12
30.5 mm Black
Metal Duplex Type ?
4 Feb 1954
13 Feb 1954



Type 13
32.5 mm Black
1936 Type F/1 4-Bar
27 Dec 1957
5 Jun 1964



Type 14
33 mm Black
1963 Type F/2 4-Bar (28538)
8 Dec 1965
19 Mar 1975



Type 15
35 mm Magenta
1963 Type F/2 4-Bar (28538)
27 Apr 1988

GREENE COUNTY

Hookerston, Hookerstown, Hookerton (Cont.)

(Greene)



Type 16
34.5 mm Black
Self-Inking Postmarker
Type 3A (28538)
9 May 1989
10 Jul 1991



Type 17
34 mm Black
Self-Inking Postmarker
Type 3A (28538)
17 Jun 1993
23 May 1995



Type 18
35 mm Black
Self-Inking Postmarker (28538)
24 Nov 2006



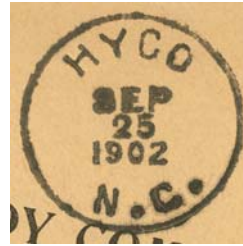
Type 19
31 mm Red
Self-Inking Postmarker (28538)
24 Nov 2006

GREENE COUNTY

Hyco

(Greene)

Macon E. Dial 30 Dec 1901
Discontinued 28 Feb 1907



Type 1
29.5 mm Black
25 Sep 1902

Jason

(Greene)

Walter D. Mewborn 26 Feb 1886
Discontinued 30 Jun 1902
Walter D. Mewborn 2 Aug 1902
Discontinued 2 Jan 1907
Mail to Lagrange, Lenoir County

Lindell, name changed from Appletree

(Greene)

Andrew J. Overman 11 Feb 1898
Benjamin R. Daniel 17 Nov 1899
Benjamin F. Edmundson 19 Jan 1900
Joseph S. Jones 30 Dec 1905
Charles S. Smith 9 Feb 1907
Discontinued 15 Nov 1907
Mail to Speight's Bridge

Lizzie

(Greene)

Moses D. Lasitter 7 Feb 1889
Thomas W. Lasitter 26 May 1900
Discontinued 31 Jan 1903
Papers to Snow Hill



Type 1
27.5 mm Black
20 Sep 1900

GREENE COUNTY

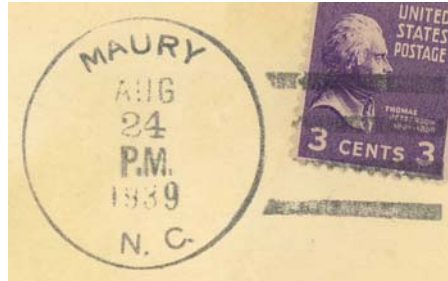
Maury

(Greene)

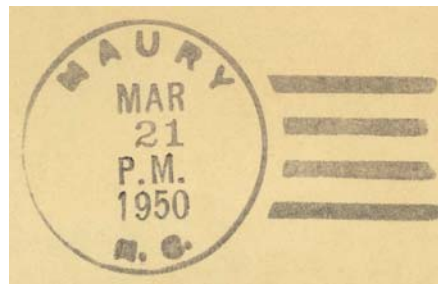
Alfred J. Grimsley	8 Jun 1909
Leonard L. Hardy	15 Mar 1910
Daniel W. Braxton	15 Sep 1917
Discontinued	31 Oct 1923
Mae Barber	16 Feb 1939
Althea R. Heath, Acting	31 May 1955
Jennie H. Barber, Acting	7 Aug 1955
Steven A. Gaydek	29 Aug 1957
Joseph E. Phillips Officer-In-Charge	23 Jun 1979
Mrs. Jennie B. Harrell	23 Feb 1980
William Corrier Officer-In-Charge	30 Oct 1981
Edward A. Creech	20 Mar 1982
Patricia Franklin Officer-In-Charge	
Bonnie C. Summerlin	18 Aug 1984
Jo Ann Sutton Officer-In-Charge	
Judith Pierce Clements	20 Dec 1986
Mike Edge Officer-In-Charge	24 Aug 1990
Margaret N. Clemmons	1 Dec 1990



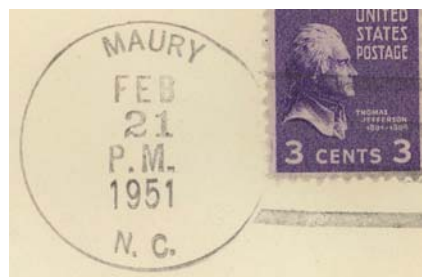
Type 1
32.5 mm Black
1910 Type B 4-Bar
23 Dec 1920



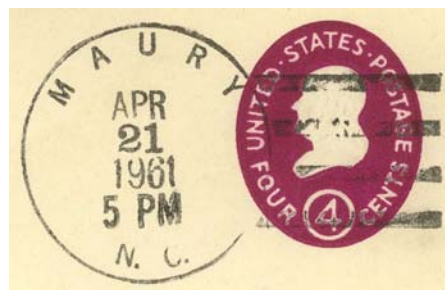
Type 2
32.5 mm Black
1936 Type F/1 4-Bar
24 Aug 1939



Type 3
33 mm Black
1936 Type F/1 4-Bar
12 Aug 1949
21 Mar 1950



Type 4
33 mm Black
1936 Type F/1 4-Bar
21 Feb 1951
30 Apr 1954

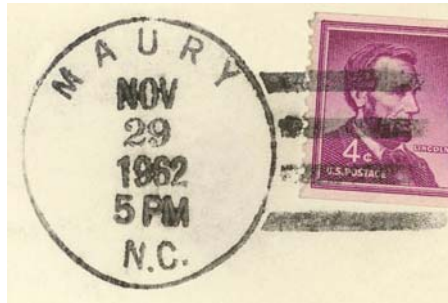


Type 5
33.5 mm Black
1936 Type F/1 4-Bar
12 Mar 1956
21 Apr 1961

GREENE COUNTY

Maury (Cont.)

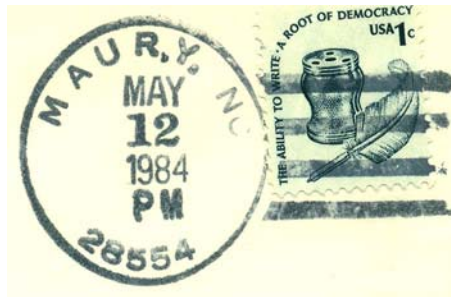
(Greene)



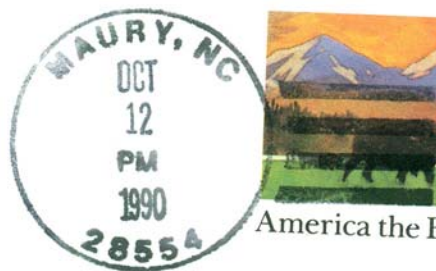
Type 6
35 mm Black
1936 Type F/e 4-Bar
29 Nov 1962



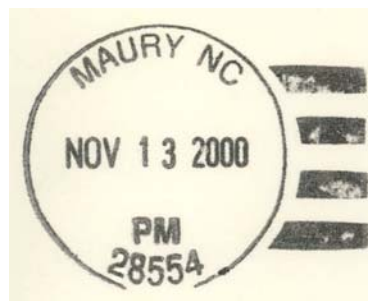
Type 7
33.5 mm Black
1963 Type F/2 4-Bar (28554)
10 Apr 1975
4 Feb 1980



Type 8
34 mm Black
1963 Type F/2 4-Bar (28554)
8 Oct 1983
12 May 1984



Type 9
34.5 mm Black
Self-Inking Postmarker
Type 3A (28554)
12 Oct 1990
5 Sep 1991

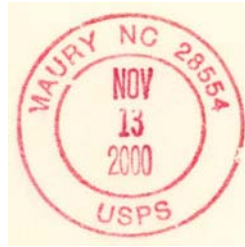


Type 10
35 mm Black
Self-Inking Postmarker (28554)
13 Nov 2000
15 Dec 2006

GREENE COUNTY

Maury (Cont.)

(Greene)



Type 11
30 mm Red
Self-Inking Postmarker (28554)
13 Nov 2000



Type 12
31.5 mm Red
Self-Inking Postmarker (28554)
15 Dec 2006

Maysville

(Greene)

Wesley B. Mangum	21 Jun 1853
William L. Tyer	15 Jul 1854
Norfleet Tyer	16 Jan 1855
George W. Moore	9 Jun 1855
Benjamin F. Moore	13 Oct 1859
Bennett Fields	15 Jan 1861
No record of CSA activity	
Richard Phillips	4 Dec 1865
Discontinued	23 Mar 1870

Newsom

(Greene)

Giles S. Newsom	8 Jun 1882
Discontinued	20 Nov 1882
Mail to Shine	

GREENE COUNTY

Ormondsville

(Greene)

John J. Ormond 26 Feb 1879
Elias Turnage 26 Mar 1886
Discontinued 31 Jan 1903
Papers to Snow Hill



Type 1
32.5 mm Black
28 Jul 1885



Type 2
28 mm Black
16 Jan 1892



Type 3
28 mm Black
14 Jun 1899

Ridge Spring, moved from Pitt County

(Greene)

Alonzo R. Holton 4 Sep 1879
Discontinued 31 Oct 1902
Papers to Ayden, Pitt County



Type 1
28.5 mm Black
27 Sep 1892

Scuffleton

(Greene)

Alexander H. Russell 13 Dec 1837
William M. Tuton 14 Apr 1840
M. W. H. Sumrell 17 Feb 1841
Discontinued 23 Mar 1842

GREENE COUNTY

Shine

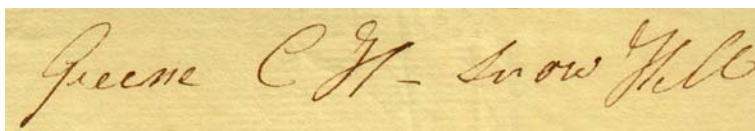
(Greene)

Rufus E. Best	8 Jun 1882
David F. Smith	18 Aug 1895
Discontinued	15 Sep 1904
Mail to Snowhill	

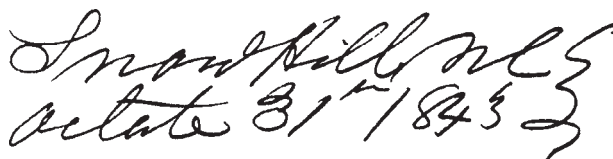
Snow Hill

(Greene)

Benjamin Evans	by 1 Oct 1803
James G. Sheppard	21 Aug 1811
James Porter	1 Apr 1812
Adam Tooley	24 Apr 1815
William D. Hart	20 Sep 1817
B. J. Hallcome	3 Nov 1818
William G. Lasiter	29 May 1819
Winston Powell	6 Mar 1820
George P. Lovick	1 Jan 1822
George P. Kinsey	1 Apr 1826
Blaney Brand	19 Mar 1827
Discontinued	7 Sep 1830
Ruffin Granger	11 Oct 1830
Discontinued	23 May 1831
Ruffin Granger	28 Jun 1831
Charles H. Harper	14 Jun 1832
Henry H. Harper	27 May 1846
Reuben Wallace	22 Jul 1846
Sylvester B. Tumage	27 Jul 1848
Joshua Rouse	16 Oct 1849
Lloyd G. Ridgely	30 Dec 1851
John T. Freeman	25 Jan 1854
J. T. Freeman, CSA	Bibliog. #19
CSA office closed on or before	30 Apr 1865
William H. Dail	21 Sep 1865
W. P. Germisly	4 Dec 1865
Discontinued	14 May 1867
Kiddy A. Potter	21 Oct 1867
W. A. Guy	21 Oct 1872
William F. Dail	17 Feb 1873
John Murphy	22 Sep 1874
James T. Sugg	3 May 1878
Noah H. Beaman	8 Apr 1889
Laura A. Sugg	1 Apr 1893
Joseph H. Beaman	10 May 1897
Romulus W. Beaman	15 Dec 1902
Franklin W. Faircloth	22 Jan 1904
Frank A. Mosley	24 Apr 1914
Rosebelle Lasitier	1 Oct 1918
Rosebelle L. Chestnutt (marriage)	no date
Arthur L. Beaman	19 Mar 1924
Sydney Deans, Acting	20 May 1925
Blaney W. Hill	18 Jan 1926
Fred W. Hill, Acting	30 Dec 1930



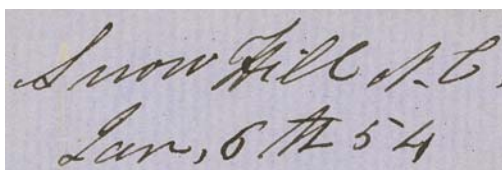
Manuscript
15 Jun 1803



Manuscript
10 Oct 1817
7 May 1847



Type 1
33.5 mm Black
4 Aug 184x
10 Nov 1848



Manuscript
8 Jun 1853
14 Mar 1854



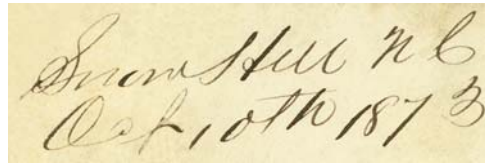
Type 2
30 mm Black
31 Jul 185x
25 Aug 1864

GREENE COUNTY

Snow Hill (Cont.)

(Greene)

Evelyn Hill, Acting	1 Feb 1931
Evelyn Hill	18 Jan 1932
Albert Lee Herring	13 May 1936
Henry Lee Owens	2 Oct 1968
Greta Diane Cortright Criag	19 Sep 1981
John Dillahunt Officer-In-Charge	
William Roger Hill	30 Aug 1986
Paul K. Thompson Officer-In-Charge	12 Jul 1990
Daniel Bullock Jr.	8 Sep 1990
Debra W. Harris Officer-In-Charge	26 Aug 2008
Mary E. Slentz Officer-In-Charge	6 Jan 2009
Raymond Patrick Archer Officer-In-Charge	1 Feb 2009
Sasha D. Mitchell Officer-In-Charge	20 Mar 2009
Lynn Harris Officer-In-Charge	1 Jul 2009
Connie S. Hardy Officer-In-Charge	14 Apr 2010
Michael Harris Postmaster	



Manuscript
10 Oct 1873



Type 3
24.5 mm Magenta
15 Apr 1878



Type 4
25.5 mm Black
23 Jun 1881
9 Nov 1888

Also used as receiving datestamp



Type 5
27.5 mm Black
14 Aug 1891
29 Aug 1896

Also used as receiving datestamp



Type 5.5
28.5 mm Black
11 Nov 1898
6 Aug 1900



Type 6
30 mm Black
14 Jun 1905
11 Jul 1906

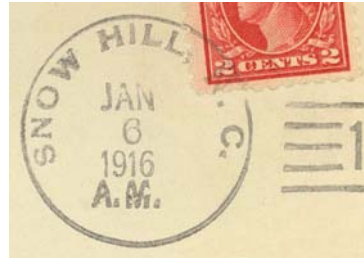
GREENE COUNTY

Snow Hill (Cont.)

(Greene)



Type 7
31.5 mm Black
1906 Type A/1 4-Bar
4 May 1908
23 Sep 1910



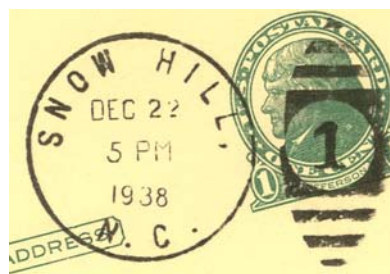
Type 8
30.5 mm Black
Doane Mimic Type 1-1
24 Mar 1910
19 May 1918



Type 9
29.5 mm Black
Doane Mimic Type 1-1
20 Jan 1920
25 Aug 1921



Type 10
31.5 mm Black
1924 Type D 4-Bar
4 Sep 1925

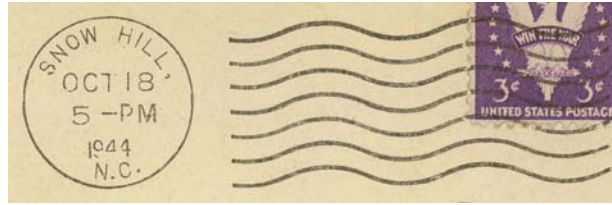


Type 11
30.5 mm Black
Metal Duplex Type E2
22 Dec 1938
13 Jul 1951

GREENE COUNTY

Snow Hill (Cont.)

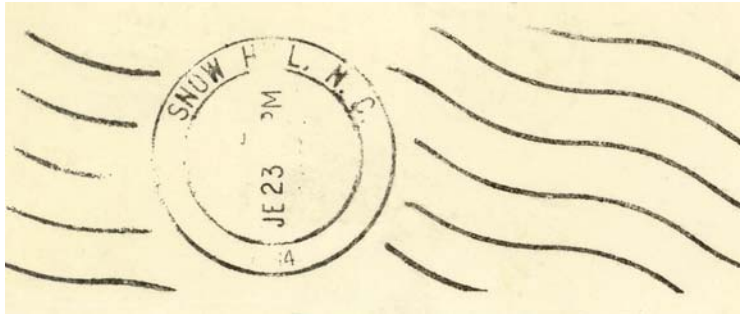
(Greene)



Type 12
22.5 mm Black
International Machine
Type AT/S 2721
13 Jan 1941
1 Sep 1961



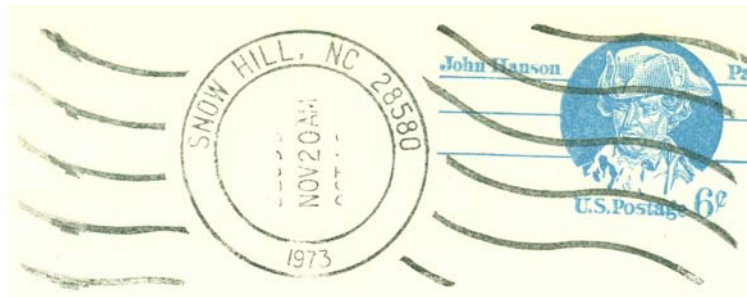
Type 13
21.5 mm Black
International Machine
Type J30
29 Jun 1959
24 Apr 1965



Type 14
32 mm Black
Hanley hand-held roller
23 Jun 1964



Type 15
21.5 mm Black
International Machine
Type Hz30 (28580)
20 Jun 1966
31 Jan 1974



Type 16
32 mm Black
Hanley hand-held roller (28580)
7 Dec 1970
20 Nov 1973



Type 17
28.5 mm Red
28 Jun 1974
3 Aug 1979

GREENE COUNTY

Snow Hill (Cont.)

(Greene)



Type 18
29 mm Black
7 Feb 1990



Type 19
31.5 mm Black
1963 Type F/2 4-Bar (28580)
24 Dec 1993
9 May 1995



Type 20
36.5 mm Red
Self-Inking Postmarker (28580)
9 Feb 1998



Type 21
31 mm Red
Self-Inking Postmarker
(28580-9998)
28 Nov 2000



Type 22
35 mm Red
Self-Inking Postmarker (28580)
10 Mar 2006

GREENE COUNTY

Speight's Bridge

(Greene)

Lemon Speight	24 Oct 1829
Nathan P. Daniel	23 Jun 1830
Bryan Little	18 Nov 1831
William A. Darden	1 Jan 1840
Owen H. Jones	26 Feb 1849
Jeremiah Beeman	19 Mar 1850
William A. Darden	29 Mar 1855
John M. Cox, CSA	7 Jan 1862
R.C.D. Beaman, CSA	Bibliog. #19
CSA office closed on or before	30 Apr 1865
George Beaman	4 Dec 1865
Sanders P. Cox	7 Mar 1866
Charles P. Farmer	20 Nov 1882
Henry G. Williams	22 May 1883
Henry G. Williams, Jr.	12 Jun 1883
Elbert A. Darden	30 Oct 1883
William M. Darden	12 Nov 1883
Charles P. Farmer	11 Mar 1886
Thomas S. Kennedy	2 Sep 1887
R. E. Beaman	18 Jul 1893
Discontinued	30 Jun 1908
Mail to Stantonsburg, Wilson County	

Speight's Bridge N.C.
August 3

Manuscript
11 Feb 1841
23 Dec 187x



Type 1
27.5 mm Black
25 Oct 1893



Type 2
28 mm Black
Doane Type 2-?
13 Oct 1905
21 May 1907

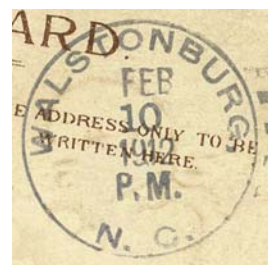
Walstonburg

(Greene)

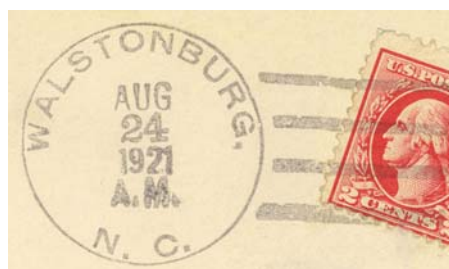
Levi D. Eason	20 Feb 1908
Richard D. S. Dixon	6 Oct 1913
Ray West	6 Oct 1913
Robert F. Holoman (declined)	26 Mar 1919
Andrew F. Windham	29 Jul 1919
Thelma Mangum (declined)	1 Mar 1920
Guy C. Dixon, Acting	20 Aug 1924
Guy C. Dixon	26 Jan 1925
Tina M. Dixon, Acting	4 Sep 1926
Tina M. Dixon	28 Jan 1927
Tina M. Scarborough (marriage)	11 Jul 1937
Jean Corbett, Acting	10 Nov 1937
Tryphenia McKeel	2 Mar 1938
William K. Taylor, Acting	12 Aug 1963
William K. Taylor	25 May 1966
Joseph W. Childress Officer-In-Charge	29 Jul 1983
Troy A. Greene	6 Aug 1983
Linda P. Bowers Officer-In-Charge	31 Jan 1987
Peggy E. Coker Officer-In-Charge	28 May 1987
Mary Ann Radford	6 Jun 1987
Thomas E. Smith Jr. Officer-In-Charge	3 May 1991
Herbert M. Gay Officer-In-Charge	31 Jul 1991
Randall K. Vester	7 Sep 1991
Robert E. Rudd Officer-In-Charge	3 Aug 1993
Lois W. Strickland Officer-In-Charge	10 Nov 1993
Samuel E. Flythe	11 Dec 1993
Amy M. Wells Officer-In-Charge	23 Oct 1999
Wanda Coleman Officer-In-Charge	7 Mar 2000
Amy M. Wells	29 Jul 2000



Type 1
31 mm Black
1906 Type A/1 4-Bar
17 Apr 1909
5 Jun 1909



Type 2
31 mm Black
1908 Type A/2 4-Bar
10 Feb 1912



Type 3
32 mm Black
1910 Type B 4-Bar
15 Jan 1921
30 Dec 1921

GREENE COUNTY

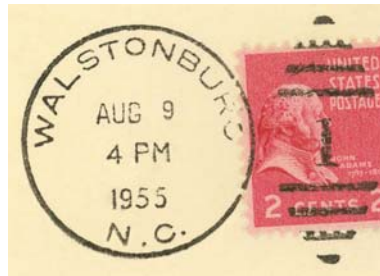
Walstonburg (Cont.)

(Greene)

Patricia H. Hill Officer-In-Charge 15 Jan 2003
 Donna B. Kehoe 1 Nov 2003
 Lowell Allen Smoot Officer-In-Charge 31 Aug 2004
 Donna B. Kehoe Officer-In-Charge
 Lowell Allen Smoot II 14 May 2005



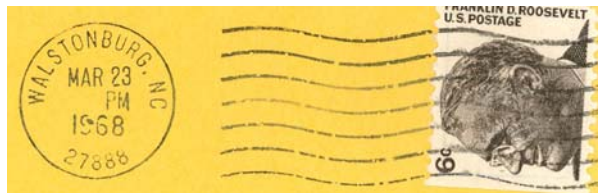
Type 4
 30 mm Black
 Metal Duplex Type H2
 7 Jul 1947
 19 Apr 1950



Type 5
 30.5 mm Black
 Metal Duplex Type ?
 9 Aug 1955
 12 Sep 1957



Type 6
 20.5 mm Black
 Universal Machine
 Type DT 200K
 21 Jan 1955
 12 Dec 1960



Type 7
 20.5 mm Black
 Universal Machine
 Type DTSz 200K
 26 Oct 1967
 6 Oct 1992



Type 8
 33.5 mm Black
 1963 Type F/2 4-Bar (27888)
 16 Feb 1973



Type 9
 30.5 mm Magenta
 16 Feb 1973

GREENE COUNTY

Walstonburg (Cont.)

(Greene)



Type 10
32.5 mm Black
1963 Type F/2 4-Bar (27888)
26 Oct 1984



Type 11
33 mm Red
1963 Type F/2 4-Bar (27888)
11 Aug 1992



Type 12
33.5 mm Black
Self-Inking Postmarker (27888)
1 Dec 2000
23 Mar 2007

M.O.B.
(Money Order Business)



Type 1
29 mm Magenta
7 Jul 1947

Willow Green

(Greene)

Ezekiel H. Hornaday 1 Sep 1875
Frank T. Carr 3 May 1900
Discontinued 31 Oct 1902
Papers to Ayden, Pitt County