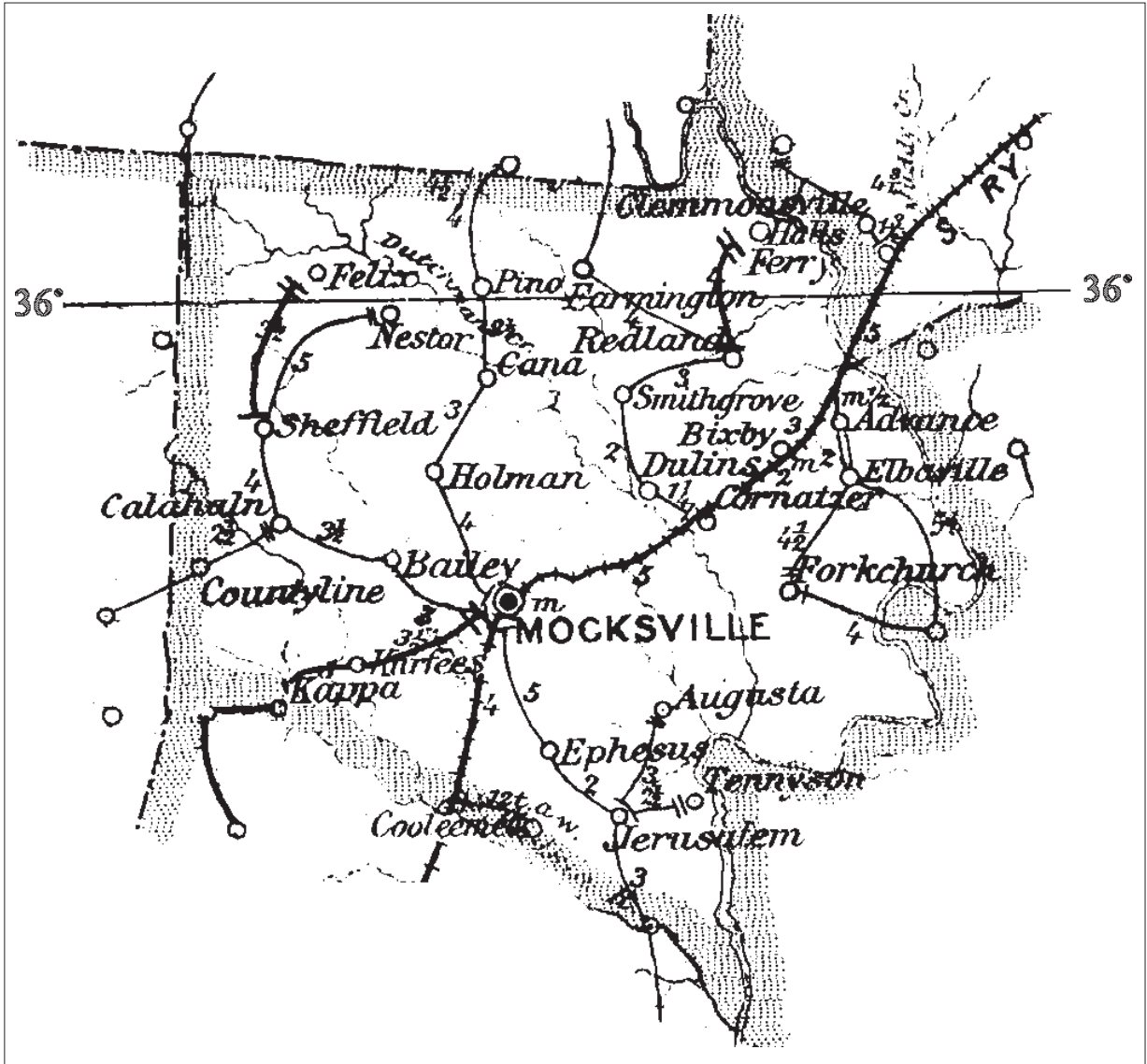


DAVIE COUNTY

Established 20 December 1836

From Rowan County

Number of Post Offices - 36
Number with postmarks known - 28



DAVIE COUNTY

Advance

(Davie)

Enoch Hartman	16 Feb 1877
Alexander A. Springs	13 Nov 1877
Henry T. Smithdeal	10 Apr 1885
Mattie E. Lippord	29 Jun 1889
Henry T. Smithdeal	17 Apr 1893
William C. White	1 Jun 1897
L. A. Bailey	16 Aug 1909
William T. Mack	14 Feb 1914
James L. Talbert, Acting	5 Jun 1925
James L. Talbert	17 Dec 1925
Mary Lewis Hartman, Acting	10 Jun 1942
Elizabeth P. Bailey	19 Mar 1943
Walter G. Ratledge, Acting	15 Jul 1950
Walter G. Ratledge	18 Jun 1952
Ralph C. Ratledge , Acting	31 Dec 1953
Gladys T. Ratledge	5 Aug 1954
Pansy C. Ward, Acting	9 Dec 1966
Mamie B. Hartman, Acting	16 Jun 1967
Mamie B. Hartman	19 Jun 1968
Kay Brakefield Officer-In-Charge	23 May 1988
William A. Caudle Officer-In-Charge	13 Jul 1988
Robert Wayne Norman Officer-In-Charge	1 Feb 1989
David L. Dilbeck Officer-In-Charge	19 Jul 1989
Charles E. Beres	30 Jun 1990
Angela H. Curtis Officer-In-Charge	13 Jan 1998
William C. Shatzel	28 Feb 1998
Sammy Wall Officer-In-Charge	11 Dec 2004
Darlene P. Williams	16 Apr 2005
James Norman Officer-In-Charge	1 Nov 2007



Type 1
33.5 mm Black
29 May 1885
14 May 1894



Type 2
31.5 mm Black
10 Feb 1892
9 Feb 1893



Type 3
28 mm Black
10 Feb 1897
12 Oct 1901



Type 4
28.5 mm Black
Doane Type 2-4
21 Mar 1905
10 Apr 1911



Type 5
31.5 mm Black
1910 Type B 4-Bar
7 Aug 1911
17 Jul 1916



Type 6
30 mm Black
Metal Duplex Type H2
23 Nov 1916

DAVIE COUNTY

Advance (Cont.)

(Davie)



Type 7
32.5 mm Black
1925 Type C/1 4-Bar
16 Jan 1929



Type 8
36 mm Black
Non-standard 4-Bar
23 Jan 1943



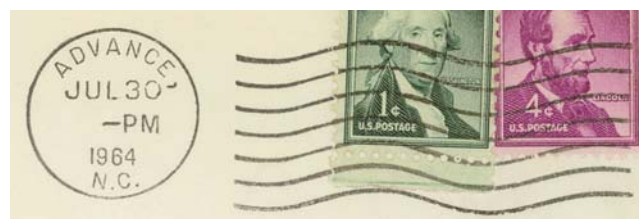
Type 9
33 mm Black
1936 Type F/1 4-Bar
8 Oct 1943



Type 10
30.5 mm Black
Metal Duplex Type ?
14 Sep 1951
4 Jan 1961



Type 11
22.5 mm Black
International Machine
Type AT/S 2721
22 Jan 1959
24 May 1963



Type 12
22.5 mm Black
International Machine
Type AT/S 2712
18 Jan 1964
9 Feb 1965

DAVIE COUNTY

Advance (Cont.)

(Davie)



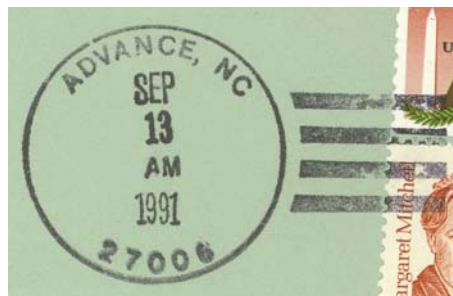
Type 13
23.5 mm Black
International Machine
Type AT/S 2712
7 Jun 1966
29 May 1970



Type 14
33.5 mm Black
1963 Type F/2 4-Bar (27006)
31 May 1968



Type 15
32 mm Black
1963 Type F/2 4-Bar (27006)
17 Sep 1976



Type 16
34.5 mm Red
Self-Inking Postmarker
Type 4A (27006)
2 Jan 1988
13 Sep 1991



Type 17
27.5 mm Red
Self-Inking Postmarker (27006)
2 Jan 1991
24 May 2003

DAVIE COUNTY

Advance (Cont.)

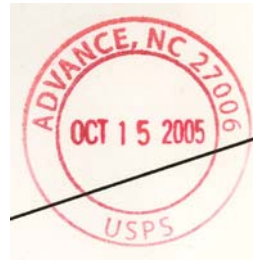
(Davie)



Type 18
36 mm Red
Self-Inking Postmarker (27006)
21 May 2004
21 Mar 2006



Type 19
35 mm Red
Self-Inking Postmarker
(27006-9998)
5 May 2005
16 Dec 2005



Type 20
30 mm Red
Self-Inking Postmarker (27006)
22 Sep 2005
5 Feb 2008

Station Cancels

Bermuda Quay Station



Type 1
28 mm Red
Self-Inking Postmarker (27006)
6 May 1992
14 May 1996



Type 2
43.5 mm Red
Self-Inking Postmarker (27006)
19 Jul 2005
3 Jul 2006

DAVIE COUNTY

Advance (Cont.)

(Davie)

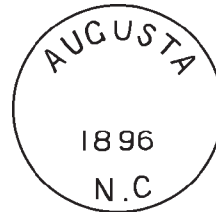
Rural Free Delivery

Type 2B (1)
1902

Augusta

(Davie)

John D. Hodges 1 Aug 1888
Discontinued 30 Jun 1902
Mail to Mocksville

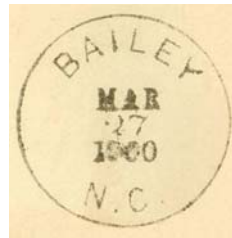


Type 1
28 mm Black
1896
11 Feb 1900

Bailey, name changed from Selena

(Davie)

John M. Blount 19 Apr 1890
Mattie Mooring 13 Apr 1895
Discontinued 30 Jun 1902
Mail to Mocksville



Type 1
28 mm Black
10 Feb 1893
27 Mar 1900

DAVIE COUNTY

Bend

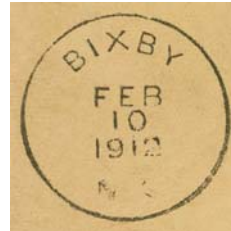
(Davie)

Charlie G. Swaringen 18 Jul 1901
 Discontinued 31 May 1911
 Mail to Farmington

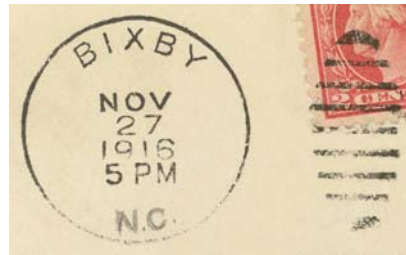
Bixby

(Davie)

William I. Myers 26 Jul 1898
 Dewill H. Hendricks 1 May 1915
 Joseph H. Robertson 27 Apr 1920
 Discontinued 15 Mar 1935
 Mail to Advance



Type 1
 27.5 mm Black
 14 Nov 1904
 10 Feb 1912



Type 2
 30 mm Black
 Metal Duplex Type H2
 27 Nov 1916

Calahaln

(Davie)

Charles Anderson 8 Dec 1858
 Charles Anderson, CSA 5 Jul 1861
 CSA office closed on or before 30 Apr 1865
 Federal office discontinued 7 Jan 1867
 Sallie T. Anderson 10 Nov 1868
 Sallie T. Smoot 2 Sep 1873
 Charles Anderson 13 Apr 1883
 Richard S. Anderson 17 Nov 1894
 Lizzie J. Tomlinson 23 Jan 1906
 Wiley N. Anderson 15 Aug 1913
 Nelson T. Anderson 22 Mar 1928
 Discontinued 15 Aug 1932
 Mail to Mocksville

Calahaln

Manuscript
 1 Sep 1879
 3 Jul 1885



Type 1
 28.5 mm Black
 Doane Type 2-1
 16 Mar 1908
 10 Mar 1910



Type 2
 32.5 mm Black
 1910 Type B 4-Bar
 13 Mar 1917

DAVIE COUNTY

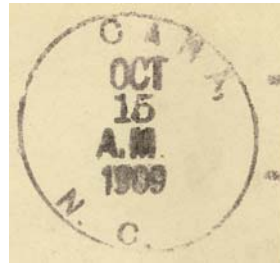
Cana

(Davie)

James E. Cain	12 Feb 1875
John R. Bailey	12 Dec 1898
William H. Foote	9 Apr 1914
Ina N. Cain	13 Mar 1919
Discontinued	30 Sep 1954
Mail to Mocksville	



Type 1
 28 mm Black
 3 May 1886
 26 Sep 1900



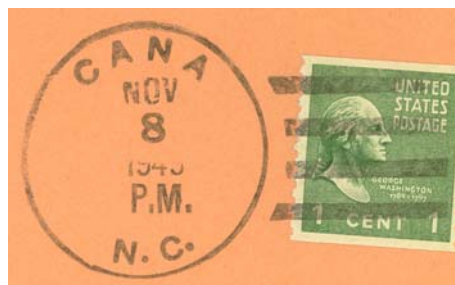
Type 2
 31.5 mm Black
 1908 Type A/2 4-Bar
 15 Oct 1909
 7 Feb 1910



Type 3
 31 mm Black
 1910 Type B 4-Bar
 8 Jan 1913



Type 4
 33 mm Black
 1930 Type E 4-Bar
 25 Mat 1936



Type 5
 33 mm Black
 1936 Type F/1 4-Bar
 21 Nov 1941
 30 Sep 1954

DAVIE COUNTY

Cana (Cont.)

(Davie)

Rural Free Delivery



Type 8C (1)
31 mm Black
12 Jan 1907
1908



Type 8C (2)
31 mm Black
1906
16 Apr 1908

Clarksville

(Davie)

William O. Smith	23 Jun 1855
Hamon Critz	30 Jan 1860
Hamon Critz, CSA	3 Jul 1861
CSA office closed on or before	30 Apr 1865
Rachael E. Chesire	16 Dec 1865
Mary H. Critz	1 Jul 1867
Sarah A. Anderson	22 Aug 1867
George J. Bool	7 Jul 1868
Discontinued	9 Aug 1869

Cooleemee

(Davie)

John S. Lyon	9 Feb 1900
George C. Patterson	15 Dec 1902
William H. Candell	28 Dec 1906
Thomas L. Swicegood	26 Mar 1910
Jesse G. Foster	10 Apr 1914
Noah J. Grimes	23 Nov 1921
Lillington Hendrix, Acting	7 Sep 1933
Lillington Hendrix	16 Jan 1935
William C. White, Acting	30 Sep 1952
Tullie M. Alexander, Acting	31 Jul 1953
Mrs. Tullie M. Alexander	16 Jul 1954
William C. White, Acting	31 Jan 1962
William C. White	27 Sep 1962



Type 1
29 mm Black
19 Sep 1901
27 Apr 1904

DAVIE COUNTY

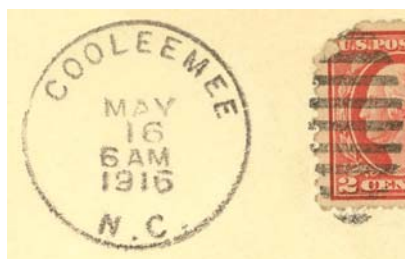
Cooleemee (Cont.)

(Davie)

F. Katherine Craddock Officer-In-Charge	31 Aug 1979
Harold L. Reid	15 Dec 1979
Margie B. Pope Officer-In-Charge	6 Apr 1987
Joan W. Steele	23 May 1987
Elizabeth B. Owens Officer-In-Charge	2 Oct 1998
Judith F. Brittain Officer-In-Charge	14 Oct 1998
Judith F. Phillips (marriage)	24 Oct 1998
Michael Craig Mock Officer-In-Charge	31 Jan 2005
Michael Craig Mock	2 Apr 2005



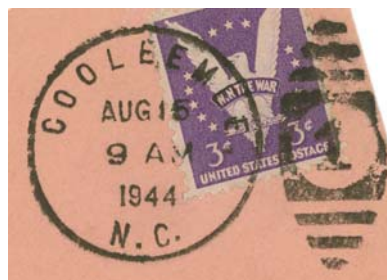
Type 2
30 mm Black
Metal Duplex Type H2
26 Jul 1907



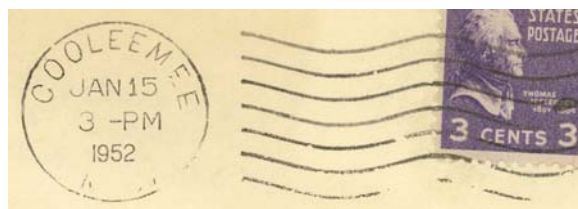
Type 3
30 mm Black
Metal Duplex Type H2
23 Nov 1911
20 Feb 1919



Type 4
33.5 mm Black
1925 Type C/1 4-Bar
12 Mar 1932



Type 5
31 mm Black
Metal Duplex Type E2
14 May 1934
22 Jun 1960



Type 6
24 mm Black
Ielfield Machine
Type A1
15 Jan 1952

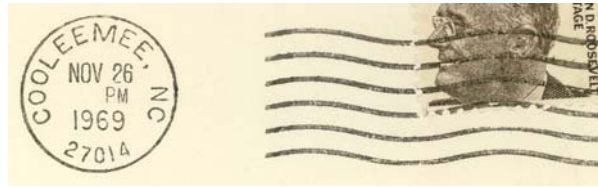


Type 7
21 mm Black
Universal Machine
Type DT 300
3 May 1956
22 Feb 1965

DAVIE COUNTY

Cooleemee (Cont.)

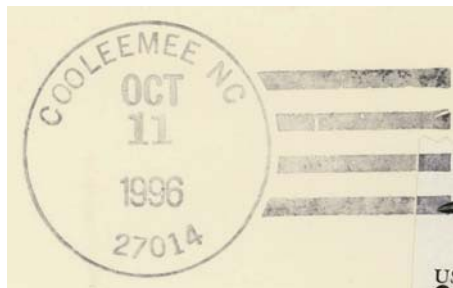
(Davie)



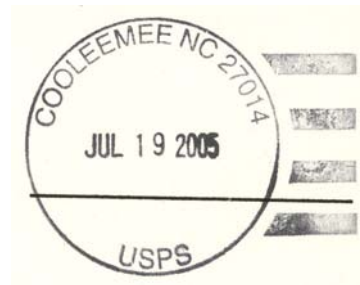
Type 8
20.5 mm Black
Universal Machine
Type DTSz 300 (27014)
26 Mar 1966
1 Mar 1971



Type 9
33 mm Black
1963 Type F/2 4-Bar (27014)
18 Jul 1974
27 Sep 1993



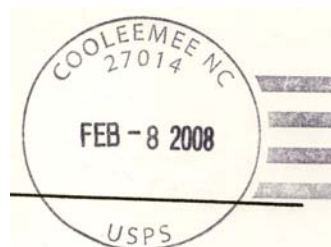
Type 10
33.5 mm Black
1963 Type F/2 4-Bar (27014)
11 Oct 1996



Type 11
33.5 mm Black
Self-Inking Postmarker (27014)
13 Apr 2005
8 May 2007



Type 12
34.5 mm Red
Self-Inking Postmarker (27014)
29 Jun 2005
3 Oct 2006



Type 13
31 mm Black
Self-Inking Postmarker (27014)
2 Jan 2008
7 Oct 2008

DAVIE COUNTY

Cooleemee (Cont.)

(Davie)

Registered

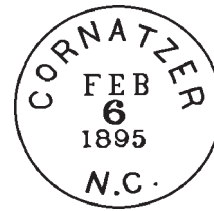


Type 1
29 mm Magenta
26 Nov 1947

Cornatzer

(Davie)

Jacob H. Cornatzer	29 Mar 1892
William J. Strickland	17 Mar 1896
Minnie E. Cornatzer	2 Jul 1897
Minnie E. Foster	23 Jan 1904
Drury D. Bennett	9 Sep 1905
Discontinued	31 May 1932
Mail to Mocksville	



Type 1
27.5 mm Black
6 Feb 1895



Type 2
32.5 mm Magenta
1925 Type C/1 4-Bar
31 May 1932

County Line, from Rowan County

(Davie)

Richard T. Dismukes	8 Oct 1836
John Lunn	11 Mar 1837
Amos B. Sanford	22 Dec 1842
Wilfred Turner	7 Feb 1845
Nicholas M. Griffin	16 Dec 1850
John Wesley Eccles	26 May 1852
Henry C. Eccles	7 Mar 1856
Henry C. Eccles, CSA	6 Jul 1861
Discontinued on or before	30 Apr 1865
John Seamon	16 Dec 1865
John W. Gray	30 Sep 1867
G. F. Downum	18 Nov 1879
N. Spurgeon Gaither	22 Mar 1881
Joshua T. Eaton	12 Oct 1883
Dabney Lowery	10 Oct 1889
Bettie E. Blackwell	23 Oct 1893
Mary T. Lowery	8 Oct 1897
Discontinued	31 May 1906
Mail to Mocksville	

County Line

Manuscript
12 Oct 1844
27 Dec 1847

*County Line No
June 30
1857*

Manuscript
30 Jun 1857
27 Jul 1863

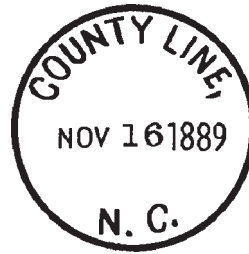
*County Line No
4-15-1889*

Manuscript
10 Nov 1868
6 Feb 1891

DAVIE COUNTY

County Line (Cont.)

(Davie)



Type 1
32.5 mm Black
16 Nov 1889



Type 2
28 mm Black
5 Mar 1901
24 Feb 1902

Dulins

(Davie)

William F. Summers 10 Mar 1887
Thomas F. Atkinson 22 May 1888
Discontinued 20 Apr 1905
Mail to Mocksville



Type 1
27 mm Black
20 Nov 1898

Dutchman

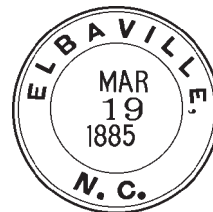
(Davie)

William C. Atkinson 1 Jun 1894
Discontinued 8 Feb 1898
Papers to Smith Grove

Elbaville

(Davie)

Lewis Bailey 15 Aug 1870
Amanda J. Ellis 9 Feb 1898
Benton C. Orell 21 Oct 1901
Discontinued 30 Jun 1902
Papers to Advance



Type 1
27.5 mm Black
19 Mar 1885
27 Sep 1891



Type 2
27 mm Black
7 Mar 189x

DAVIE COUNTY

Ephesus

(Davie)

Miles A. Foster 10 May 1890
 Discontinued 31 May 1906
 Mail to Mocksville



Type 1
 27 mm Black
 16 Apr 1891
 18 Aug 1891

Farmington

(Davie)

George W. Johnson 1 May 1837
 G. W. Johnson, CSA 4 Jul 1861
 CSA office closed on or before 30 Apr 1865
 Sarah D. McGill 16 Jan 1866
 Valeria M. Johnson 4 Dec 1868
 Francis M. Johnson 3 Dec 1874
 Richard C. Brown 30 Aug 1878
 Francis M. Johnson 30 Jan 1883
 Peter Lowery 13 Nov 1890
 William G. Johnson 23 May 1893
 Galenus H. Graham 8 Nov 1897
 Charles A. Hartman 30 Apr 1904
 Jettie R. Graham 3 Aug 1908
 Ernest P. Walker 12 Nov 1909
 Thomas C. Fry 14 Nov 1914
 Cora B. Brock 7 Aug 1918
 Elsie Clarence James, Acting 4 Mar 1936
 Elsie Clarence James 15 May 1936
 Discontinued 30 Sep 1954
 Mail to Mocksville



Manuscript
 12 Oct 1844



Type 1
 29 mm Black
 185x
 16 Jan 1857



PAID
 FREE

Postmaster frank
 16 Jan 1857



Type 2
 32 mm Black
 22 Nov 1861



Type 3
 24.5 mm Blue
 25 Mar 187x



Type 4
 26 mm Black
 27 Nov 187x

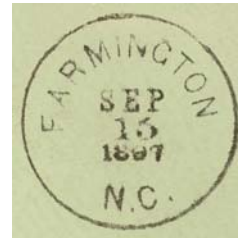
DAVIE COUNTY

Farmington (Cont.)

(Davie)



Type 5
27.5 mm Black
13 Aug 1888
9 Feb 1895



Type 6
28.5 mm Black
2 Mar 1896
4 May 1898



Type 7
29 mm Black
Metal Duplex Type H2
24 Jul 1908
2 Mar 1910



Type 8
32.5 mm Black
1910 Type B 4-Bar
26 Feb 1920



Type 9
33.5 mm Black
1925 Type C/1 4-Bar
23 Sep 1935



Type 10
34 mm Black
1936 Type F/1 4-Bar
30 Sep 1954

DAVIE COUNTY

Felix

(Davie)

George L. Anderson 7 May 1886
 James F. Frost 29 Jun 1889
 Discontinued 15 May 1905
 Mail to Cana

Manuscript
 2 Apr 1896

Florence

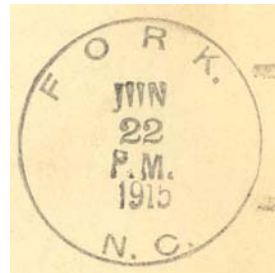
(Davie)

Jilson A. Sheck 15 Jun 1877
 Discontinued 17 Apr 1878

Fork

(Davie)

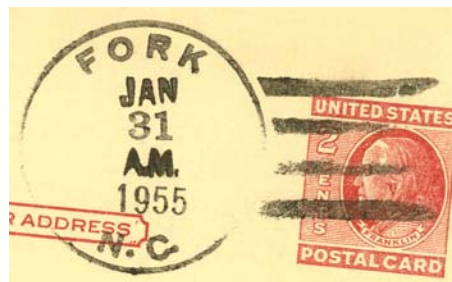
William H. Davis 29 Nov 1913
 Discontinued 31 Jul 1918
 William H. Davis 2 Feb 1937
 Sadie Rice, Acting 1 Jul 1948
 Sadie Rice 10 Sep 1948
 Discontinued 31 Jan 1955
 Mail to Mocksville



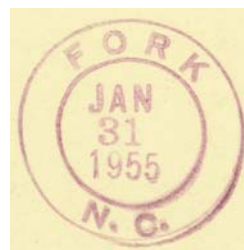
Type 1
 32.5 mm Black
 1910 Type B 4-Bar
 22 Jun 1915



Type 2
 32.5 mm Black
 1936 Type F/1 4-Bar
 8 Mar 1937
 22 Jun 1938



Type 3
 33 mm Black
 1936 Type F/1 4-Bar
 9 Dec 1943
 31 Jan 1955



Type 4
 30 mm Magenta
 31 Jan 1955

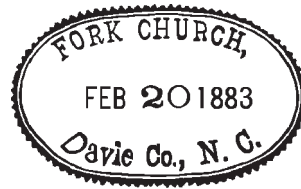
DAVIE COUNTY

Fork Church

(Davie)

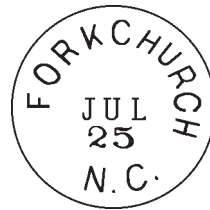
John R. Williams 24 Jul 1876
 Wilson F. Merrell 20 Mar 1879
 John R. Williams 31 Aug 1885
 John R. Williams, Jr. 11 Sep 1885
 John B. Smith 29 Jun 1889
 Daniel V. Davis 24 May 1893
 Andrew M. Foster 7 Aug 1897
 Discontinued 30 Apr 1906
 Mail to Mocksville

Fork Church No.



Manuscript
 18 Feb 187x

Type 1
 39 x 24 mm oval Black
 20 Feb 1883
 17 Jun 1884



Type 2
 27 mm Black
 25 Jul 189x



Type 3
 28 mm Black
 18 Jun 1893
 19 Jan 1900



Type 4
 28.5 mm Black
 Doane Type 2-?
 26 Aug 1905

Fulton

(Davie)

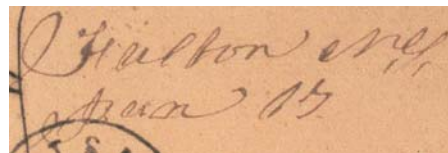
Joseph Hanes 1836
 Lewis C. Hanes 7 Sep 1847
 William R. Sharpe 18 Apr 1851
 William R. Sharpe, CSA 16 Jul 1861
 CSA office closed on or before 30 Apr 1865
 Milton Hobbs 10 Feb 1866
 Mary Ceeton 9 Apr 1866
 Milton Hobbs 21 Oct 1867
 Discontinued 6 Jan 1873
 Elizabeth P. Sharpe 30 Jan 1873
 George Fry 29 Oct 1884
 Henry B. Ireland 10 Apr 1885
 Sallie A. Hanes 4 May 1892
 Discontinued 2 Mar 1896
 Papers to Fork Church

Fulton, N.C.

Manuscript
 26 Mar 1845
 9 Nov 1848

Fulton N.C.

Manuscript
 15 Mar 1850
 21 Mar 1851



Manuscript
 17 Jan 1862

DAVIE COUNTY

Fulton (Cont.)

(Davie)

Fulton, Feby 19th 1872

Manuscript
19 Feb 1872
17 Nov 1888

Halls Ferry

(Davie)

Cornelius A. Hall 31 Oct 1878
Levin A. Sheck 18 Nov 1887
Cornelius A. Hall 21 Feb 1900
Discontinued 30 Jun 1902
Papers to Advance

*Halls Ferry N.C.
Oct 10 1884*

Manuscript
10 Oct 1884
5 Feb 1900



Type 1
27.5 mm Black
3 Feb 1893



Type 2
29.5 mm Purple
16 Jul 1901

Holmans, Holman

(Davie)

Henry C. Holman 13 Mar 1878
Jinnie B. Smoot 16 Dec 1890
Name changed to **Holman** 17 Dec 1894
Henry C. Holman 17 Dec 1894
Discontinued 30 Apr 1906
Mail to Mocksville

*Holman N.C.
Jan 19th 1883*

Manuscript
19 Jan 1883



Type 1
27.5 mm Black
3 Mar 1897
26 Mar 1897

DAVIE COUNTY

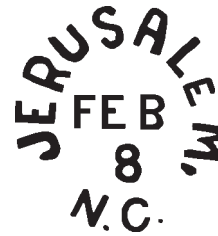
Jerusalem

(Davie)

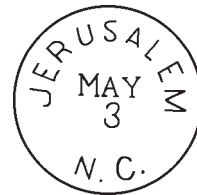
Joseph M. Hodges	15 Apr 1850
Colton W. Bissent	26 Jul 1856
C. W. Bissent, CSA	6 Jul 1861
CSA office closed on or before	30 Apr 1865
Federal office discontinued	11 Dec 1866
Anderson F. Pickler	29 Jan 1868
Thomas S. Butler	31 Jan 1871
John N. Charles	26 Apr 1872
Francis W. Charles	13 Nov 1895
Nannie M. Tate	6 Sep 1902
Discontinued	31 Oct 1902
Mail to Mocksville	

Jerusalem N.C.

Manuscript
23 Apr 1861
31 May 1861



Type 1
27.5 mm Black
8 Feb 186x



Type 2
25 mm Black
3 May 187x



Type 3
27 mm Black
9 Oct 1889
14 Nov 1893

Kappa

(Davie)

Ann C. Ketchie	27 Mar 1883
Scott Smoot	1 May 1884
David H. Perry	17 Oct 1891
James J. Starrett	9 Aug 1893
Salena J. Ketchie	2 Oct 1895
Discontinued	15 May 1905
Papers to Mocksville	

Kappa NC

Manuscript
8 Jan 188x



Type 1
27 mm Black
6 Mar 1900

Kurfees

(Davie)

Jesse L. Kurfee	22 Mar 1900
Discontinued	30 Jun 1902
Papers to Mocksville	

DAVIE COUNTY

Mocksville, from Rowan County

(Davie)

Thomas McNeely 20 Dec 1836
 Samuel Rose 2 Aug 1847
 Pearsole Thompson 11 Apr 1851
 Calvin U. Rich 14 Jan 1854
 Beal Smith 31 Aug 1858
 W. L. Brown 3 Feb 1859
 William A. Meroney 28 Nov 1859
 Rufus D. Brown 11 Aug 1860
 R. D. Brown, CSA 1 Jun 1861
 L. F. Parker, CSA 6 Jul 1861
 CSA office closed on or before 30 Apr 1865
 Ann M. Parker 9 Sep 1865
 Thomas L. Leslie 3 Nov 1865
 Jane E. Austin 4 Apr 1870
 Edwin H. Morris 10 May 1897
 Benjamin O. Morris 29 Sep 1908
 E. E. Hunt, Sr. 20 May 1913
 James L. Sheek 14 Apr 1922
 J. Kimbrough Sheek, Acting 26 May 1931
 Armand T. Daniel, Acting 6 Jun 1931
 Armand T. Daniel 19 Feb 1932
 John P. LeGrand, Acting 24 Feb 1936
 John P. LeGrand 27 Mar 1936
 James E. Kelly 1 Jul 1948
 Daisy Holthouser, Acting 26 Sep 1951
 James E. Kelly, Acting 30 Sep 1952
 Robert D. Tutterow, Acting 30 Sep 1954
 Worth T. Hendricks, Acting 22 Feb 1957
 Mrs Sudie R. Smoot, Acting 16 Dec 1960
 Roy H. Cartner, Acting 8 Mar 1961
 Roy H. Cartner 28 Mar 1962
 W. A. Lovelace Officer-In-Charge 30 Dec 1977
 Franklin R. Brown 22 Apr 1978
 Edsel G. Morgan Officer-In-Charge 27 Dec 1980
 Walter F. Loveless 30 May 1981
 Bennie Ward Officer-In-Charge 29 Aug 1990
 Harold L. Reid Officer-In-Charge 6 Feb 1991
 Dennis H. Peterson 29 Jun 1991
 William C. Shatzel Officer-In-Charge 28 Oct 1997
 Joan L. Holyfield 17 Jan 1998
 Michael Pike Officer-In-Charge 28 Mar 2001
 Randal Anderson Officer-In-Charge 22 Jan 2002
 Michael Golby Officer-In-Charge 22 Mar 2002
 Craig Mock Officer-In-Charge 2 Apr 2003
 Elizabeth L. Hammond 29 May 2004

Mocksville N.C.

Manuscript
 7 Feb 1837
 1 Mar 1847



PAID
 Type 1
 FREE


Type 1
 30 mm Red
 26 Jul 1841
 30 Apr 1850

30 mm Black
 29 Jan 1848
 25 Mar 186x

5 5 5
 Type 1 Type 2 Type 3

PAID 3 10
 Type 1

PAID



Type 2
 32.5 mm Black
 9 Aug 1860
 20 Aug 1862

PAID 5 PAID 10
 10


Type 2 Type 2

Mocksville

Manuscript
 1861
 19 Jun 1862

DAVIE COUNTY

Mocksville (Cont.)

(Davie)

Mocksville

Manuscript
1865
1867



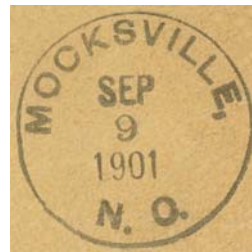
Type 3
25.5 mm Black
28 Apr 187x
4 Aug 1886



Type 4
27.5 mm Black
2 Jul 1891
5 Mar 1892



Type 5
28.5 mm Black
10 Feb 1897
3 Mar 1898



Type 6
31 mm Black
9 Sep 1901



Type 7
30 mm Black
Metal Duplex Type H2
6 Aug 1901
20 Oct 1916



Type 8
32 mm Black
Non-standard Postmark
Duplex Horizontal Bar (9)
26 Oct 1903
28 Oct 1903

DAVIE COUNTY

Mocksville (Cont.)

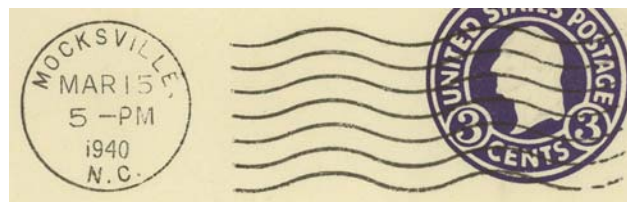
(Davie)

Type 9
23 mm Black
Columbia Machine
Type 2W
14 Sep 1920
15 Mar 1922

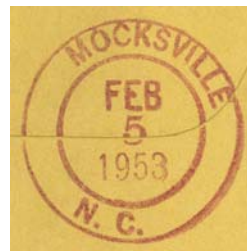
Type 10
23 mm Black
Columbia Machine
Type 1W
21 Dec 1926
24 Aug 1928



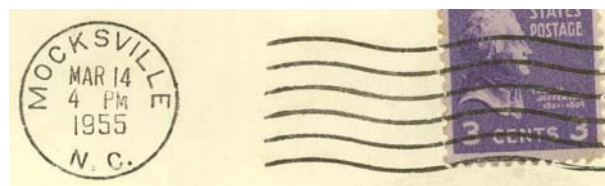
Type 11
30 mm Black
Metal Duplex Type H2
19 May 1938
30 Dec 1939



Type 12
22.5 mm Black
International Machine
Type AT/S 2722
5 Aug 1939
19 Jan 1950



Type 13
29 mm Magenta
5 Feb 1953



Type 14
21 mm Black
Universal Machine
Type DT 300
1 Apr 1953
14 Mar 1955

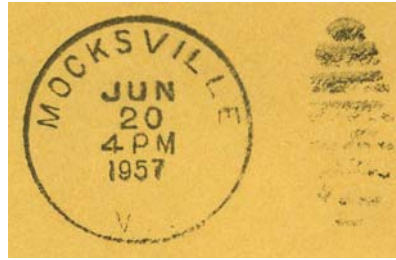


Type 15
21 mm Black
Universal Machine
Type DT 300 (smaller letters)
7 Jan 1960
16 Sep 1963

DAVIE COUNTY

Mocksville (Cont.)

(Davie)



Type 16
30 mm Black
Metal Duplex Type H2
20 Jun 1957



Type 17
35.5 mm Black
6 Nov 1958
7 Jan 1959



Type 18
21 mm Black
Universal Machine
Type DTSz 300 (27028)
11 Oct 1966
6 May 1997



Type 19
33 mm Black
1963 Type F/2 4-Bar (27028)
16 Apr 1971



Type 20
30 mm Magenta
20 Jun 1985



Type 21
28.5 mm Red
Self-Inking Postmarker (27028)
7 Dec 1989

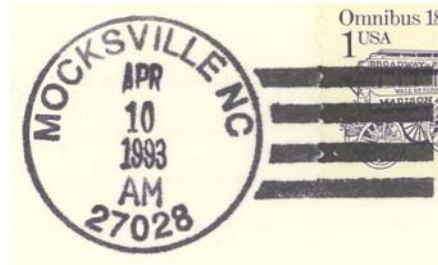
DAVIE COUNTY

Mocksville (Cont.)

(Davie)



Type 22
33.5 mm Black
Self-Inking Postmarker
Type 3A (27028)
17 Apr 1992

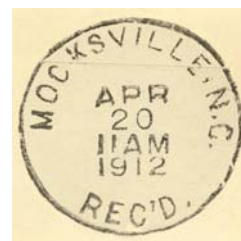


Type 23
31.5 mm Black
Self-Inking Postmarker
Type 1B (27028)
10 Apr 1993



Type 24
34.5 mm Black
Self-Inking Postmarker
Type 3A (27028)
11 Aug 1997

Receiving datestamp



Type R1
29 mm Black
10 Mar 1910
20 Apr 1912

Rural Free Delivery

Type 1N (1) Black?
1903
1908

Type 2B(2)
1903

DAVIE COUNTY

Mocksville (Cont.)

(Davie)

Rural Free Delivery (Cont.)



Type 8C(2) Black
18 Apr 1904
1906



Type 8C(5) Black
4 Dec 1907
6 Apr 1908

Type 2J(3) Black?
1908

Type 11C (1) Black?
1910

Nestor

(Davie)

Enoch Jarvis	7 May 1886
Francis M. Hendricks	2 Mar 1887
William A. Langston	9 Jan 1891
John H. Sprinkle	10 Jun 1902
John E. Davis	15 Jan 1904
Lula Green	15 Sep 1904
Discontinued	15 May 1905
Mail to Cana	



Type 1
28.5 mm Black
18 Feb 1893



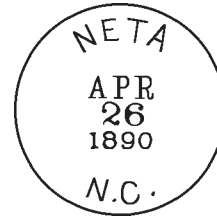
Type 2
28.5 mm Black
11 Aug 1894
15 Feb 1900

DAVIE COUNTY

Neta

(Davie)

Hattie C. Young 9 Jan 1890
Discontinued 13 May 1892
Papers to Pino



Type 1
28 mm Black
26 Apr 1890

Pino

(Davie)

Daniel Eaton 9 Jul 1890
Thomas H. Redman 23 May 1898
Daniel Eaton 28 Sep 1900
Discontinued 30 Apr 1906
Mail to Mocksville



Type 1
27.5 mm Black
12 Nov 1891
20 Oct 1897

Redland

(Davie)

Mary J. Smith 29 Mar 1892
Sanford R. Smith 9 Feb 1899
Discontinued 30 Jun 1902
Sanford R. Smith 23 Aug 1902
Discontinued 29 Sep 1906
Mail to Advance



Type 1
27.5 mm Black
27 Apr 1895

Selena

(Davie)

John M. Blount 21 Oct 1889
Name changed to **Bailey** 19 Apr 1890

Sheffield

(Davie)

Thomas M. Smith 1 Feb 1893
Discontinued 2 Jan 1907
Mail to Harmony, Iredell County

DAVIE COUNTY

Smith Grove, from Rowan County

(Davie)

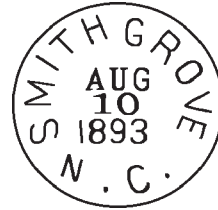
Isham P. Ellis	20 Dec 1836
Discontinued	10 Jul 1839
Enoch G. Clouse	15 Aug 1846
Discontinued	28 Aug 1850
Enoch G. Clouse	5 Sep 1850
Albert Sheck	20 Jan 1853
A. Sheck, CSA	6 Jul 1861
CSA office closed on or before	30 Apr 1865
John Sheck	16 Jan 1866
Emiline Smith	13 Feb 1866
M. D. Kimbrough	13 Jun 1866
Rebecca C. Rich	26 Jun 1866
John Sheck	22 Sep 1868
Enoch G. Clouse	30 Dec 1869
William H. Hunter	31 Mar 1873
Leon H. Cash	20 Apr 1874
William H. Hunter	8 Jul 1875
John B. Nash	30 Jul 1877
Leander A. Clouse	11 Nov 1890
Mary E. Swing	7 Dec 1891
Sallie A. Osborne	31 Jul 1896
Nola S. Sheck	20 Nov 1901
Order rescinded	10 Apr 1902
Sallie A. Osborne continued	10 Apr 1902
Discontinued	29 Sep 1906
Papers to Advance	

Smith Grove NC

Manuscript
6 Jul 186x
7 Apr 1863



Type 1
26 mm Black
1862
1866



Type 2
28 mm Black
10 Aug 1893



Type 3
28 mm Black
4 Jul 1898
22 Mar 1900

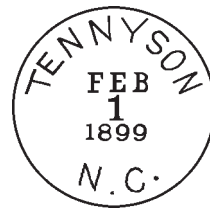


Type 4
28.5 mm Black
Doane Type 2-?
30 Jan 1906

Tennyson

(Davie)

Bettie C. Hendricks	6 Aug 1891
Mary M. Vernon	6 Aug 1898
Discontinued	31 May 1906
Mail to Mocksville	



Type 1
27 mm Black
1 Feb 1899

Wells

(Davie)

John C. Harris	10 Feb 1899
Dewitt C. Howard	27 Jul 1900
Discontinued	29 Sep 1900
Papers to Mocksville	