

# ALLEGHANY COUNTY

Formed February 1859 from Ashe County

Number of Post Offices - 69  
Number with postmarks known - 43



## ALLEGHANY COUNTY

### Ada

(Alleghany)

Alexander M.D. Cox      17 Oct 1904  
 Discontinued            27 Jan 1908  
 Mail to Mouth of Wilson, Va.



Type 1  
 29 mm Black  
 8 Oct 1907

### Airbellows

(Alleghany)

Allen Irwin                    9 Oct 1891  
 Discontinued                7 Jul 1893  
 Papers to Whitehead  
 James F. Caudill            23 Apr 1896  
 Discontinued                1 Feb 1914  
 Mail to Whitehead



Type 0.5  
 28 mm Black  
 Doane Type 2-1  
 9 Feb 1909

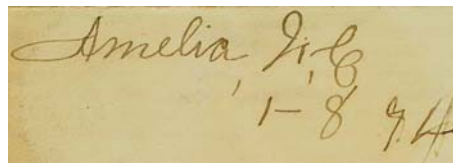


Type 1  
 32.5 mm Black  
 1910 Type B 4-Bar  
 29 Jan 1914

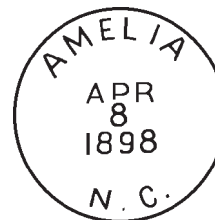
### Amelia

(Alleghany)

John C. Fender                24 Dec 1890  
 Charity L. Fender            25 May 1893  
 Discontinued                12 Jun 1894  
 Papers to Elk Creek  
 Joseph C. Fields             20 Jul 1894  
 Bettie M. Landreth         25 Oct 1898  
 Morris S. Moxley            8 Jun 1901  
 James A. Estep              28 Apr 1905  
 Robert L. Warden          5 Jun 1907  
 Joseph C. Fields             11 Jul 1913  
 Discontinued                15 Nov 1933  
 Mail to Sparta



Manuscript  
 8 Jan 1894



Type 1  
 28 mm Black  
 24 Mar 1898  
 24 Mar 1900



Type 2  
 28 mm Black  
 Doane Type 2-1  
 4 Dec 1906  
 27 Jan 1912

## ALLEGHANY COUNTY

### Amorita, from Grayson County, Va.

(Alleghany)

Rebeckah A. Burchett	30 Jun 1899
Joseph S. Stamper	3 Jan 1901
Jesse S. Larue	18 Nov 1903
Discontinued	31 Jan 1906
Mail to Horseford	

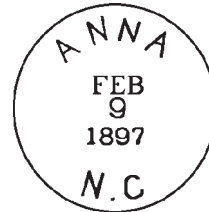


Type 1  
28 mm Black  
20 Apr 1901

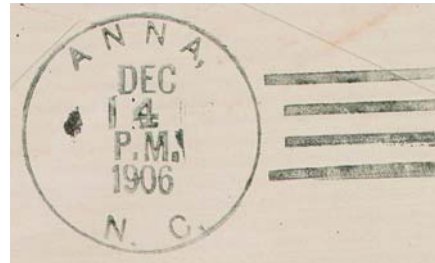
### Anna

(Alleghany)

Mary A. Johnson	11 Jul 1890
Mary A. Richardson	21 Aug 1894
Ollie M. Smith	12 Dec 1898
Robert E. Sanders	18 Oct 1899
Kenny S. Boyer	24 Apr 1907
Jay K. Sanders	21 Jan 1914
Robert V. Andrews	10 May 1918
Benjamin F. Wagoner	6 Nov 1919
Discontinued	31 May 1921
Mail to Amelia	



Type 1  
27 mm Black  
9 Feb 1897



Type 2  
31 mm Black  
1906 Type A 4-Bar  
4 Dec 1906  
8 Oct 1909

Type 3  
28 mm Black  
Doane Type 2-2  
8 Oct 1909



Type 4  
32 mm Black  
1910 Type B 4-Bar  
8 Jul 1914

## ALLEGHANY COUNTY

### Barrett

(Alleghany)

John E. Roberts	17 Oct 1912
William H. Handy	27 Sep 1913
Glenn N. Evans, Acting	28 Sep 1920
Glenn N. Evans	4 Dec 1920
Carl Todd	17 Sep 1923
Glenn N. Evans	23 May 1924
Andy T. Evans	29 Jan 1931
Bessie Evans, Acting	30 Jan 1934
Bessie Evans	11 Aug 1934
Discontinued	31 Jan 1947
Mail to Ennice	



Type 1  
32 mm Black  
1936 Type F/1 4-Bar  
1 Mar 1943

### Baugus

(Alleghany)

Robert H. Baugus	6 Apr 1908
Discontinued	31 Dec 1913
Mail to Cherry Lane	
Robert H. Baugus	8 Mar 1915
Discontinued	30 Sep 1916
Mail to Glade Valley	

### Bledsoe

(Alleghany)

John R. Edwards	14 Jul 1899
Meredith B. Martin	12 Feb 1902
Discontinued	31 Mar 1917
Mail to Sparta	

### Boyer

(Alleghany)

Andrew C. Black	14 Feb 1895
George Black	18 Oct 1899
Discontinued	31 Oct 1905
Mail to Piney Creek	



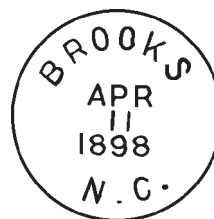
Type 1  
28 mm Black  
8 Apr 1897  
17 Mar 1900

## ALLEGHANY COUNTY

### Brooks

(Alleghany)

Drewry B. Smith	2 Nov 1891
W.E. Holloway	25 May 1893
Aaron Richardson	6 Feb 1894
Daniel Crowe	26 May 1896
Fields M. Wagoner	25 Oct 1904
Sarah A. Wagoner	22 Jun 1906
Appointment rescinded	17 Aug 1906
Melvin B. Joines	7 May 1907
Lillie Joines	8 Nov 1911
Discontinued	1 Feb 1914
Mail to Whitehead	



Type 1  
28 mm Black  
14 Mar 1898  
11 Apr 1898



Type 2  
31.5 mm Black  
Doane Type 3-1  
24 Dec 1908

### Chapel

(Alleghany)

Calloway Johnson	29 Sep 1898
David Evans	15 Jul 1899
Appointment Rescinded	4 Dec 1899
David Evans	7 May 1904
Discontinued	15 Feb 1908
Mail to Ennice	

### Cherry Lane, from Ashe County

(Alleghany)

Andrew J. Woodruff	Feb 1859
A.J. Woodruff, CSA	2 Sep 1861
CSA office closed on or before	30 Apr 1865
Francis Bryan	8 Feb 1866
Granville Gentry	2 Oct 1867
Laura L. Gentry	14 Feb 1876
George W. Thompson	12 Feb 1879
Joseph G. Woodruff	13 Apr 1883
James C. Hutchinson	27 Apr 1885
William B. Kennedy	22 Dec 1891
Lucy I. Holbrook	12 Sep 1906
Mary A. Miles	11 May 1907
Edith M. Woodruff	30 Mar 1914
Mary P. Ball, Declined	4 Sep 1915
William A. Gentry	22 Jan 1916
Ellis W. Jordan	3 Apr 1917
John T. Miles	11 Dec 1919
Lula Norman, Acting	1 Nov 1945
Lula Norman	9 Apr 1946
Discontinued	28 Feb 1955
Mail to Glade Valley	



Type 1  
27.5 mm Black  
7 Dec 1881



Type 2  
28 mm Black  
30 Mar 1900

ALLEGHANY COUNTY

Cherry Lane (Cont.)

(Alleghany)

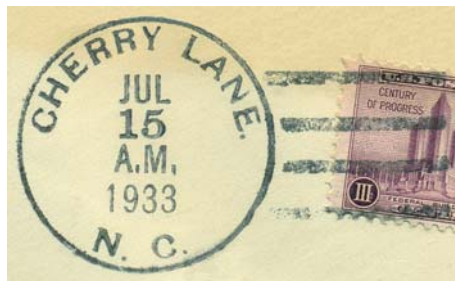
Type 3  
28 mm Black  
Doane Type 3-1  
20 May 1910  
10 Jul 1913



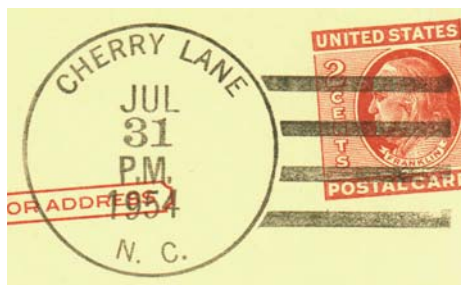
Type 4  
31 mm Black  
1908 Type A/2 4-Bar  
4 May 1912



Type 5  
32 mm Black  
1910 Type B 4-Bar  
18 Oct 1913



Type 6  
33.5 mm Black  
1931 Type C/2 4-Bar  
15 Jul 1933



Type 7  
32.5 mm Black  
1936 Type F/1 4-Bar  
21 Aug 1944  
28 Feb 1955

ALLEGHANY COUNTY

Cherry Lane (Cont.)

(Alleghany)



Type 8  
35.5 mm Black  
Non-Standard 4-Bar  
13 May 1947



Type 9  
40 mm Black  
Non-Standard 4-Bar  
1 Oct 1948  
30 Apr 1954



Type 10  
48 mm Black  
Non-Standard 4-Bar  
19 Aug 1950



Type 11  
27 mm Magenta  
14 Aug 1954

## ALLEGHANY COUNTY

### Citron, name changed from City

(Alleghany)

Ellen Upchurch	12 Jun 1922
Robert Hoppers, Acting	23 Jun 1932
Robert Hoppers	24 Feb 1933
Appointment rescinded	5 Apr 1933
Rescind order rescinded	13 Apr 1933
Kate Hoppers, Acting	4 Oct 1934
Kate Hoppers	15 Mar 1935
Bessie V. Upchurch	1 Mar 1948
Discontinued	28 Feb 1955
Mail to Laurel Springs	



Type 1  
33.5 mm Black  
1931 Type C/2 4-Bar  
29 Jan 1934  
29 Aug 1946



Type 1  
33 mm Black  
1936 Type F/1 4-Bar  
26 Jan 1953  
28 Feb 1955

### City

(Alleghany)

Benjamin F. Taylor	5 Dec 1883
Discontinued	17 Aug 1886
Papers to Whitehead	
Franklin P. Brackins	27 Jul 1891
Felix R. Warden	2 May 1892
William L. Upchurch	3 May 1894
William V. Harris	27 Feb 1905
John E. Osborn	2 Apr 1907
Alice Taylor	13 Jan 1914
Ellen Upchurch	27 Sep 1915
Name changed to <b>Citron</b>	



Type 1  
28 mm Black  
Doane Type 2-?  
3 Aug 1904  
3 Aug 1914

### Delphi

(Alleghany)

William A. Fowlkes	26 Apr 1880
James A. Fowlkes	8 Jul 1880
Nannie M. Fowlkes	14 Mar 1883
James A. Fowlkes	14 Jun 1883
Discontinued	28 Jun 1883
James A. Fowlkes	28 Aug 1883
William B. Fowlkes	25 May 1893
William A. Fowlkes	3 May 1894
Discontinued	21 Sep 1894
Papers to Sparta	



Manuscript  
5 Apr 1881

## ALLEGHANY COUNTY

### Delphia

(Alleghany)

Louisa J. Hudson	17 Nov 1897
Louisa J. Crouse	15 Jul 1899
Bernice Fowlkes	14 Aug 1902
Discontinued	Nov 30 1906
Van W. Reeves	19 Feb 1909
Discontinued	31 Oct 1915
Mail to Sparta	



Type 1  
27 mm Black  
4 Mar 1898  
10 Jul 1902

### Doughtens

(Alleghany)

Joseph B. Doughten	6 Mar 1878
Discontinued	10 Apr 1879

### Edmonds

(Alleghany)

Joshua K. Carico	28 Jun 1880
Alexander G. Carico	8 Nov 1895
Jorden S. Lyons	9 Jan 1900
M.J. McKnight	12 Dec 1902
Appointment rescinded	4 Feb 1903
John E. Roberts	17 Feb 1903
George T. Jordan	19 May 1903
Susan V. Carico	12 Dec 1906
Guy F. Rector	9 Mar 1912
Alex J. Kirby	4 Dec 1920
James W. Kirby	24 Sep 1921
Failed to qualify	
Malcome Q. Shupe	26 Aug 1922
Discontinued	15 Mar 1923
Mail to Galax, Va.	

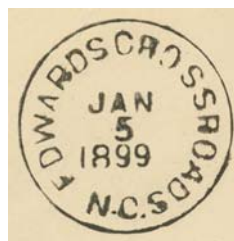


Type 1  
28 mm Black  
Doane Type 2-?  
17 Jan 1905

### Edwards Cross Roads, Edwards Crossroads

(Alleghany)

William Edwards	8 Feb 1876
Lucy C. Edwards	24 Aug 1885
Robert Thompson	6 Jul 1887
William Jennings	8 May 1888
Tena Jennings	19 Feb 1890
Mahlon L. Collins	25 May 1893
Name changed to <b>Edwards Crossroads</b>	25 Sep 1895
William R. Gentry	25 Sep 1895
Martha Hudson	12 Apr 1899
Appointment rescinded	6 Dec 1899



Type 1  
28 mm Black  
5 Jan 1899

## ALLEGHANY COUNTY

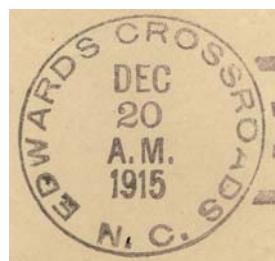
### Edwards Cross Roads, Edwards Crossroads (Cont.)

(Alleghany)

William R. Gentry	6 Dec 1899
Williamson E. Hudson	9 Apr 1900
Lena R. Gentry	29 Sep 1911
Blanche G. Joines, Acting	20 Mar 1939
Blanche G. Joines	30 Mar 1939
Blanch J. Osborne	9 Oct 1942
Discontinued	31 May 1943
Mail to Sparta	



Type 2  
28 mm Black  
Doane Type 2-2  
26 May 1905  
3 Sep 1909



Type 3  
32 mm Black  
1910 Type B 4-Bar  
20 Dec 1915



Type 4  
33 mm Black  
1936 Type F/1 4-Bar  
31 May 1943

### Egypt

(Alleghany)

Robert L. Roupe	15 Sep 1899
Calvin E. Caudill	26 Sep 1901
Discontinued	15 Apr 1903
Mail to Olney	

### Elk Creek

(Alleghany)

Joseph Johnson	12 Aug 1874
David C. Edwards	3 Jul 1883
Charity Fender	29 Nov 1889
John W. Pool	29 Dec 1891
John F. Warden	21 Apr 1897
Lewis N. York	30 Jun 1899
Allen L. Moxley	20 Nov 1905
Discontinued	28 Feb 1906
Mail to Anna	

*Elk Creek*  
*3-30-81*

Manuscript  
30 Mar 1881

# ALLEGHANY COUNTY

## Elk Creek (Cont.)

(Alleghany)



Type 1  
27.5 mm Black  
Metal Duplex Type H2  
27 Dec 1904

Receiving datestamp



Type R1  
29 mm Black  
1 Sep 1904

## Elk Spur

(Alleghany)

Sarah J. Roberts	24 Jul 1905
John W. Brown	25 Apr 1918
Discontinued	15 Apr 1942
Mail to Cherry Lane	

## Ennice

(Alleghany)

Andrew McKnight	6 Mar 1888
Stephen M. Hale	3 Feb 1892
Estill R. McMillan	20 Jan 1899
Pleasant C. Higgins	10 Apr 1907
Thomas E. Harris	11 Dec 1908
John H. Toliver	12 Oct 1909
Ambrose E. Combs	2 Mar 1911
P.C. Higgins	3 Jul 1912
Monroe Jordan	4 Mar 1914
Ennice McMillan	1 Mar 1916
Ina Todd, Acting	13 Feb 1943



Type 1  
28 mm Black  
Doane Type 2-?  
12 Jun 1905  
4 May 1909



Type 2  
32.5 mm Black  
1910 Type B 4-Bar  
29 Jun 1917

# ALLEGHANY COUNTY

## Ennice (Cont.)

(Alleghany)

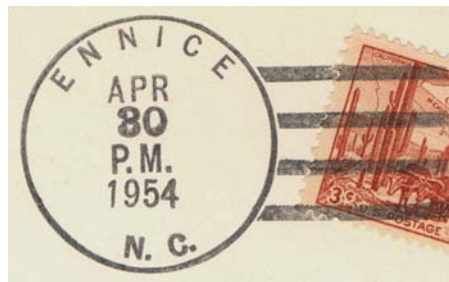
Elizabeth Easterling, Acting	26 Aug 1943
Elizabeth Easterling	15 Mar 1944
Geneva E. Blevins, Acting	13 May 1945
Geneva E. Blevins	21 Nov 1946
Mrs. Mary Ruth Andrews Officer-In-Charge	7 Jan 1972
Mrs. Mary Ruth Andrews	17 Feb 1973
Phyllis O. Hale Officer-In-Charge	28 Sep 1992
Marcia B. Eppler	20 Mar 1993
Judy A. Farmer Officer-In-Charge	29 Dec 1997
Raymond C. Cesar	28 Feb 1998



Type 3  
32.5 mm Black  
1920 Type C/1 4-Bar  
30 Jul 1921



Type 4  
32 mm Black  
1936 Type F/1 4-Bar  
18 Apr 1946



Type 5  
33 mm Black  
1936 Type F/1 4-Bar  
1 Jun 1953  
31 Jul 1954



Type 6  
29.5 mm Magenta  
31 Jul 1954



Type 7  
32 mm Black  
1936 Type F/1 4-Bar  
23 Nov 1959  
4 Jan 1962

ALLEGHANY COUNTY

Ennice (Cont.)

(Alleghany)



Type 8  
33.5 mm Black  
1963 Type F/2 4-Bar (28623)  
28 Dec 1965  
14 Jul 1966



Type 9  
34 mm Black  
1963 Type F/2 4-Bar (28623)  
30 Aug 1983



Type 10  
23 mm Black  
International Machine  
Type ATS/z 2723 (28623)  
28 Sep 1987  
29 Mar 1993

Gap Civil, from Ashe County

(Alleghany)

James H. Parks	Feb 1859
James H. Parks, CSA	1 Aug 1861
Center Edwards, CSA	Bibliog. #19
CSA office closed on or before	30 Apr 1865
Catherine E. Vaughan	16 Mar 1866
David R. Gentry	23 May 1870
William E. Hudson	18 Aug 1871
William P. Holbrooke	13 Jun 1873
John O. Edwards	30 Jun 1876
Isiah M. Brown	9 Mar 1877
William L. Norman	31 Dec 1878
Name changed to <b>Sparta</b>	24 Jun 1879

*Gap Civil N.C.*

Manuscript  
23 Aug 1860

Geba

(Alleghany)

John O. Burchett	6 May 1902
Rebeckah A. Burchett	1 Jul 1905
Discontinued	31 Oct 1905
Mail to Piney Creek	

## ALLEGHANY COUNTY

### Glade Creek, from Ashe County

(Alleghany)

Andrew B. Carson	Feb 1859
A. Carson, CSA	16 Dec 1861
CSA office closed on or before	30 Apr 1865
Andrew B. Carson	8 Feb 1866
Discontinued	15 Feb 1900
Papers to Cherry Lane	
Jennie L. Fender	16 Mar 1900
Clara M. Higgins	23 Apr 1915
Discontinued	24 May 1915
Mail to Sparta	

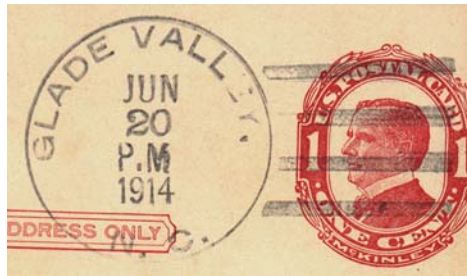
Glade Creek  
March 14 1898

Manuscript  
14 Mar 1898

### Glade Valley

(Alleghany)

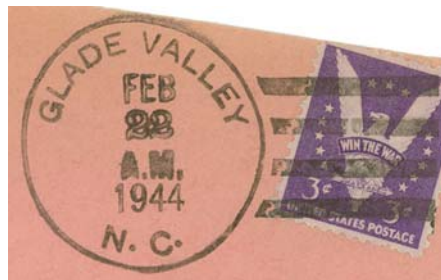
Joseph M. McBride	12 Dec 1911
Robert C. Todd	18 Jul 1919
James Rush Thompson, Acting	3 Apr 1933
James Rush Thompson	26 May 1933
Attaree M. Thompson, Acting	15 Feb 1966
Roscoe D. Franklin	8 May 1967
Elaine C. Osborne, Acting	6 Oct 1967
Elaine C. Osborne	7 Dec 1967
Carmen G. McMillan Officer-In-Charge	31 Oct 2005
Kimberly J. Reeves Postmaster	15 Apr 2006



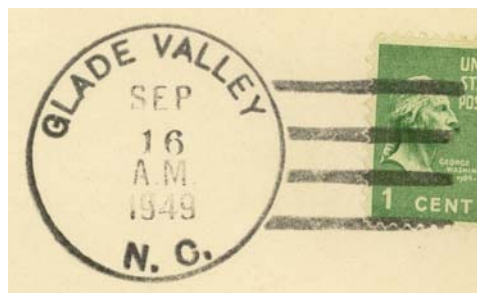
Type 1  
32.5 mm Black  
1910 Type B 4-Bar  
20 Jun 1914  
13 Sep 1921



Type 2  
34 mm Black  
1931 Type C/2 4-Bar  
6 Jan 1937



Type 3  
31.5 mm Black  
1936 Type F/1 4-Bar  
2 Jul 1942  
22 Feb 1944



Type 4  
34 mm Black  
1936 Type F/1 4-Bar  
16 Sep 1949

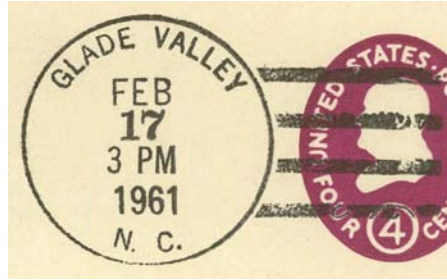
ALLEGHANY COUNTY

Glade Valley (Cont.)

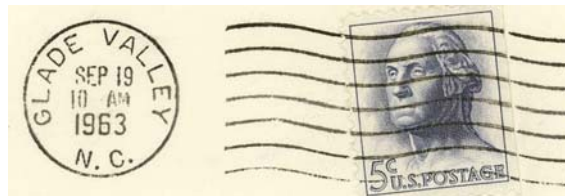
(Alleghany)



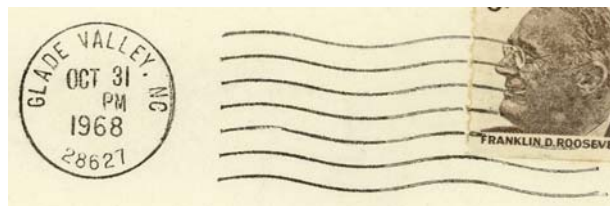
Type 5  
33 mm Black  
1936 Type F/1 4-Bar  
9 Sep 1952



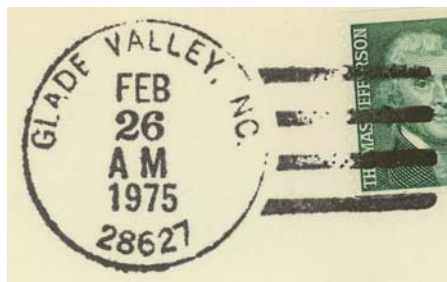
Type 6  
33 mm Black  
1936 Type F/1 4-Bar  
4 Oct 1955  
6 Aug 1962



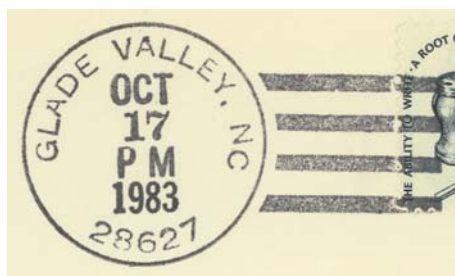
Type 7  
20.5 mm Black  
Universal Machine  
Type DT 200K  
19 Sep 1963



Type 8  
22 mm Black  
Universal Machine  
Type DTS/z 200 (28627)  
31 Oct 1968  
26 Feb 1975



Type 9  
32.5 mm Black  
1963 Type F/2 4-Bar (28627)  
13 Nov 1970  
26 Feb 1975

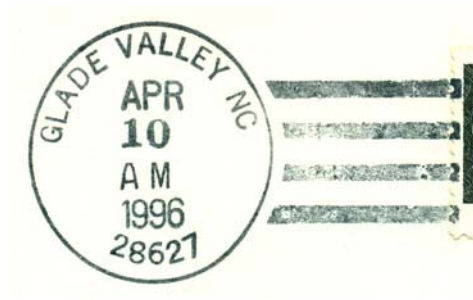


Type 10  
32 mm Black  
1963 Type F/2 4-Bar (28627)  
11 Jan 1980  
17 Oct 1983

ALLEGHANY COUNTY

Glade Valley (Cont.)

(Alleghany)



Type 11  
33.5 mm Black  
1963 Type F/2 4-Bar (28627)  
10 Apr 1996



Type 12  
33.5 mm Black  
Self-Inking Postmarker (28627)  
26 Jan 2007  
13 Aug 2010

Gray

(Alleghany)

David F. Long	7 Feb 1882
Amos F. Jones	10 Jun 1885
Thomas F. Rose	25 Jun 1886
Roxie Absher	26 Apr 1887
Mary J. Wyatt	5 Jan 1888
Leander Woodie	30 Dec 1902
Moved to Wilkes County	Feb 1903
Moved from Wilkes County	4 Feb 1916
Dona Johnson	4 Feb 1916
Verna Johnson	16 Apr 1919
Oscar Key	10 Nov 1923
Failed to qualify	
Dona Johnson, Acting	29 Feb 1924
Dona Johnson	29 Jul 1924
Discontinued	20 Jan 1931
Mail to Laurel Springs	

*Gray N.C.*

Manuscript  
8 Mar 1897



Type 1  
27.5 mm Black  
15 Mar 1898  
7 Apr 1903



Type 2  
32 mm Black  
1910 Type B 4-Bar  
21 Jun 1919

## ALLEGHANY COUNTY

### Hare

(Alleghany)

Thomas L. Harris	29 Apr 1905	Type 1
Levi M. Fender	31 Dec 1908	28 mm Black
Thomas L. Harris	14 Jan 1910	Doane Type 2-1
Ransom L. Hendrix	31 Jan 1912	14 Mar 1907
Discontinued	30 Sep 1915	28 Dec 1911
Mail to Ennice		

### Helena

(Alleghany)

Thomas Farmer	26 Jan 1900
Name changed to <b>Sibyl</b>	7 May 1915

### Highgate

(Alleghany)

John M. Cheek	11 Aug 1892
Eugene Transom	23 Jun 1896
Appointment rescinded	22 Jul 1898
John M. Cheek	22 Jul 1898
Discontinued	31 Jul 1899
Papers to Montland	



Type 1
27 mm Black
9 Oct 1897

### Hilda

(Alleghany)

James T. Evans	20 Apr 1898
Wiley M. Wyatt	15 Jul 1899
Ennis M. Spicer	29 Jan 1900
Maggie A. Beaman	6 Mar 1901
Sarah M. Wyatt	11 May 1905
Discontinued	15 Aug 1907
Mail to Pineycreek	

## ALLEGHANY COUNTY

### Hooker

(Alleghany)

Hugh Hanks	17 Jul 1882
Creed Edwards	25 Oct 1883
Richard Gentry	5 Feb 1884
Shadrick F. Jones	17 Mar 1884
Discontinued	30 Dec 1886
Papers to Cherry Lane	
Creed Edwards	2 Feb 1887
Richard H. Gentry	19 Apr 1894
Creed Edwards	5 Feb 1899
John M. Mathes	24 Jan 1901
Andrew C. Gillespie	19 Dec 1901
John W. Duncan	23 Jan 1904
Richard C. Todd	22 Jan 1914
Discontinued	15 Jun 1915
Mail to Sparta	

### Horseford

(Alleghany)

Lonnie L. Gambill	14 Jun 1902
Geneva Landreth	19 May 1903
Robert G. Warden	10 Jul 1905
Discontinued	29 Jul 1907
Mail to Amelia	

### Ida

(Alleghany)

Alice Warden	3 Jun 1904	Type 1
Discontinued	31 Mar 1914	28 mm Black
Mail to Anna		Doane Type 2-?
		30 Aug 1904
		17 May 1910

### Lamar

(Alleghany)

Andrew M. Reeves	2 May 1890
Discontinued	31 Mar 1914
Mail to Anna	

*Lamar post office probably never operated in Alleghany County; the above entry was a clerical error in the Post Office Department.*

## ALLEGHANY COUNTY

### Laura

(Alleghany)

Thomas Price	19 Apr 1898
Squire J. Irwin	11 May 1900
David C. Caudill	18 Jul 1902
Rufus Billings	2 Sep 1905
Discontinued	14 Dec 1905
Mail to Furches	



Type 1  
28 mm Black  
25 Jan 1902

### Laurel Branch, Laurelbranch

(Alleghany)

Joel G. Harris	18 Mar 1874
C.C. Williams	27 Dec 1893
Name changed to <b>Laurelbranch</b>	5 Jul 1894
Marcus L. Henderson	5 Jul 1894
Myrtie E. Henderson	3 Aug 1899
Vertie E. Smith	21 May 1903
Louella Hanks	5 Oct 1909
Floyd F. Roberts	19 Jan 1914
Discontinued	31 Jan 1920
Mail to Doughton	

*Laurelbranch*  
*nc*

Manuscript  
1899

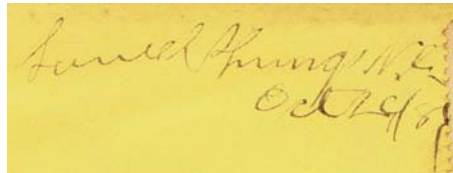


Type 1  
31 mm Black  
Doane Type 3-1  
4 Mar 1907  
6 Jan 1908

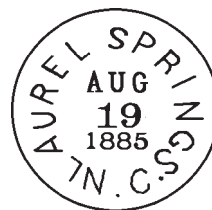
### Laurel Springs, Laurelsprings, from Ashe County

(Alleghany)

John F. Greer	10 Oct 1879
Name changed to <b>Laurelsprings</b>	21 Jun 1894
Boyd Doughton	21 Jun 1894
Robert L. Doughton	18 Apr 1896
James W. Cox	26 May 1899
Charley Black	28 Aug 1899
John H. Stamper	16 Jan 1903
Stephen A. Taylor	30 Mar 1907
Willis W. Miller	16 Aug 1913
Lola L. Landreth	27 Jul 1929
Name changed to <b>Laurel Springs</b>	1 Oct 1929
Lola L. Myers (marriage)	4 Jul 1931
William R. Miller	20 Mar 1935
Floyd C. Miller, Acting	1 May 1948
Arley O. Clark, Acting	1 Jan 1949
Arley O. Clark	4 Feb 1949
Annie B. Collins, Acting	16 Oct 1964
Annie B. Collins	30 Mar 1965
Mary E. Finney Officer-In-Charge	31 Oct 1988
Wanda K. Ferguson	11 Mar 1989
Johnny H. Barr Officer-In-Charge	12 Jul 1993
Linda C. Absher Officer-In-Charge	10 Aug 1993
Henry M. Key	25 Dec 1993



Manuscript  
26 Oct 1880



Type 1  
27 mm Black  
18 Jun 188x  
19 Aug 1885



Type 2  
27 mm Black  
17 Feb 1898

# ALLEGHANY COUNTY

## Laurel Springs, Laurelsprings (Cont.)

(Alleghany)

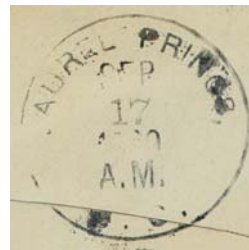
Kimberly Reeves Officer-In-Charge 30 Dec 2002  
Karen Noonkester Officer-In-Charge 10 Jul 2003  
Michael R. Boone 1 Nov 2003  
Sharon Church Officer-In-Charge 18 Mar 2005  
Marie L. Finney 22 Jul 2006  
Connie Morrison Officer-In-Charge 24 Jul 2007



Type 3  
28 mm Black  
Doane Type 2-?  
1 Feb 1906



Type 4  
31.5 mm Black  
1906 Type A/2 4-Bar  
14 Aug 1909



Type 5  
30 mm Black  
17 Sep 1909  
7 Dec 1912



Type 6  
31 mm Black  
1930 Type E 4-Bar  
5 Dec 1933  
18 Dec 1935



Type 7  
34 mm Black  
1936 Type F/1 4-Bar  
10 Apr 1941

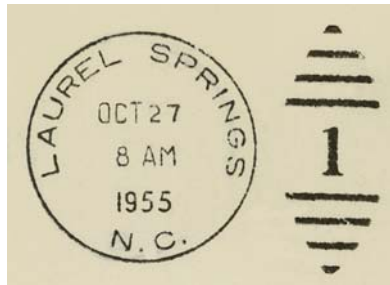
ALLEGHANY COUNTY

Laurel Springs, Laurelsprings (Cont.)

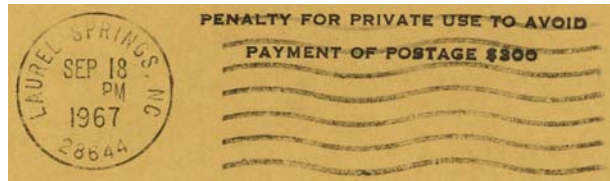
(Alleghany)



Type 8  
34 mm Black  
1936 Type F/1 4-Bar  
11 Mar 1950  
11 Jun 1953



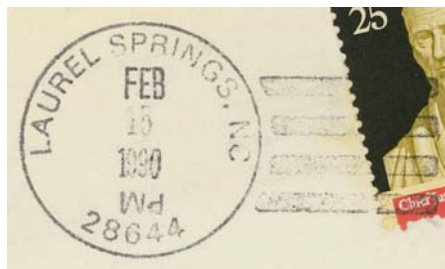
Type 9  
30 mm Black  
Metal Duplex Type ?  
27 Oct 1955  
3 Dec 1963



Type 10  
22 mm Black  
Universal Machine  
Type DTS/z 200K  
17 Jun 1967  
16 Feb 1989



Type 11  
32.5 mm Black  
1863 Type F/2 4-Bar (28644)  
16 Sep 1974



Type 12  
31 mm Black  
Self-Inking Postmarker  
Type 3B (28644)  
15 Feb 1990

ALLEGHANY COUNTY

Laurel Springs, Laurelsprings (Cont.)

(Alleghany)



Type 13  
31.5 mm Black  
Self-Inking Postmarker  
Type 1A (28644)  
11 Jul 1991  
10 Jul 1992



Type 14  
29 mm Red  
Self-Inking Postmarker (28644)  
3 Apr 1997



Type 15  
32.5 mm Black  
Self-Inking Postmarker  
Type 1A (28644)  
19 Jun 2000



Type 16  
35.5 mm Black  
Self-Inking Postmarker (28644)  
6 Dec 2006  
6 Sep 2008



Type 17  
33 mm Red  
Self-Inking Postmarker (28644)  
1 Jul 2008

# ALLEGHANY COUNTY

## Laurel Springs, Laurelsprings (Cont.)

(Alleghany)

### Rural Station Cancels

Scottville Rural Station

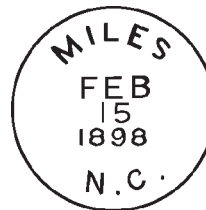
25 Mar 1991

31 Oct 2002

## Miles

(Alleghany)

Ella Miles	22 Jun 1898
William R. Vannoy	26 Jan 1914
Myrtle E. Royal	15 Jul 1929
Discontinued	15 Aug 1950
Mail to Traphill	



Type 1  
27 mm Black  
Feb 1890  
30 Mar 1899



Type 2  
28 mm Black  
Doane Type ?  
1 Oct 1906



Type 3  
33 mm Black  
1936 Type F/1 4-Bar  
12 Jan 1943



Type 4  
32 mm Black  
1936 Type F/1 4-Bar  
23 Oct 1945  
15 Aug 1950

## ALLEGHANY COUNTY

### Miles (Cont.)

(Alleghany)

M.O.B.  
(Money Order Business)



Type 1  
28 mm Magenta  
17 Mar 1919

Name spelled incorrectly

### Montland

(Alleghany)

John A. Caudill 28 Jun 1892  
Ella Wagoner 15 Mar 1900  
Discontinued 20 Apr 1904  
Mail to Whitehead



Type 1  
27.5 mm Black  
23 Jan 1901

### Murray

(Alleghany)

Emma J. Richardson 10 Jun 1901  
D. Frank Richardson 17 May 1905  
Discontinued 31 Dec 1905  
Mail to Laurelsprings

### Napoleon

(Alleghany)

Allen Moxley 7 Sep 1901  
Charity Moxley 23 May 1903  
Appointment rescinded 23 Sep 1903  
Allen Moxley 23 Sep 1903  
Charity Moxley 9 Apr 1904  
Alfred Moxley 14 Dec 1904  
Discontinued 31 Oct 1905  
Mail to Piney Creek

## ALLEGHANY COUNTY

### New River

(Alleghany)

Hardin B. Williams	3 Dec 1860
No record of CSA operation	
Federal office discontinued	7 Jan 1867
L.P. Williams	31 May 1870
Discontinued	5 Dec 1870
Hardin B. Williams	19 Dec 1873
Clara Williams	29 Jun 1877
Hardin B. Williams	27 Aug 1877
Clara D. Williams	17 May 1880
Clara D. Roop	11 Jul 1882
Samuel F. Halsey	21 Mar 1884
Discontinued	16 Feb 1897
Papers to Topia	

### Nile

(Alleghany)

Haywood D. Edwards	17 May 1898
Henry H. Carter	7 Apr 1903
John W. Maines	16 Sep 1905
James A. Maines	1 May 1914
Discontinued	31 Oct 1915
Mail to Sparta	



Type 1  
28.5 mm Black  
7 Feb 1900



Type 2  
31 mm Black  
Doane Type 3-1  
14 Jan 1908  
23 Mar 1910

### Norman

(Alleghany)

William L. Norman	5 Jul 1881
Discontinued	2 Apr 1890
Papers to Edwards Cross Roads	

### Nulin

(Alleghany)

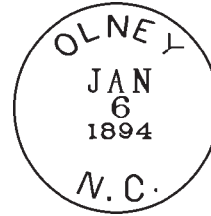
Thomas F. Parsons	3 Sep 1888
Robert C. Parsons	5 May 1896
James L. Kennedy	7 Feb 1901
Discontinued	15 May 1905
Mail to Mouth of Wilson, Va.	

## ALLEGHANY COUNTY

### Olney

(Alleghany)

Alice Long	19 Sep 1893
Velen J. Taylor	2 Oct 1897
William F. Jones	10 Oct 1899
Floyd Roupe	19 Apr 1905
Discontinued	14 Dec 1905
Mail to Furches	

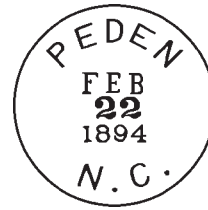


Type 1  
27.5 mm Black  
6 Jan 1894  
21 Feb 1898

### Peden

(Alleghany)

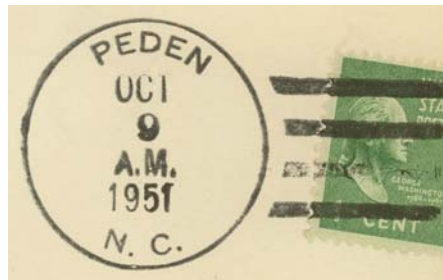
Nora C. Weaver	4 Apr 1892
Robert C. Weaver	18 Aug 1919
Ella Edwards, Acting	20 Jul 1926
Ella Edwards	3 Nov 1926
Martha L. Weaver, Acting	2 Sep 1933
Martha L. Weaver	17 Jan 1935
Marth L Evans (marriage)	unknown
William H. Weaver, Acting	6 Nov 1937
William H. Weaver	13 Dec 1937
Viola Williams	20 Jan 1940
Discontinued	31 Mar 1952
Mail to Scottville	



Type 1  
26 mm Black  
29 Dec 1892  
22 Feb 1894



Type 2  
31 mm Black  
Doane Type 3-4  
23 Feb 1909  
4 Dec 1916

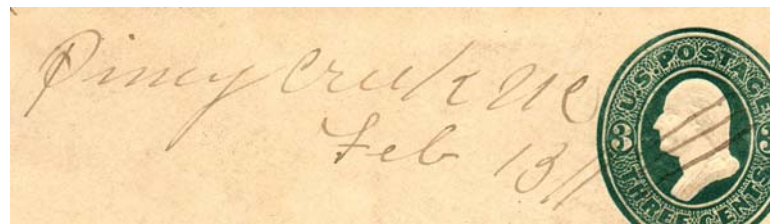


Type 3  
32 mm Black  
1936 Type F/1 4-Bar  
14 Apr 1950  
9 Oct 1951

### Piney Creek

(Alleghany)

Craig S. Parsons	1 Aug 1860
No record of CSA activity	
Federal office discontinued	11 Dec 1866
Alexander A. McMillan	21 Apr 1870
Discontinued	5 Apr 1872
William H. Billings	22 Sep 1874
Discontinued	11 Jun 1877
Solomon C. Parsons	13 Nov 1877
John M. Baldwin	2 Jun 1897
Joseph Douglass	22 Jun 1901
James D. Sturgill	13 Jul 1909
Felix G. Warden	22 Apr 1914
Lester C. Caudill	17 Feb 1923



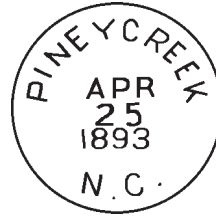
Manuscript  
13 Feb 188x

# ALLEGHANY COUNTY

## Piney Creek (Cont.)

(Alleghany)

John R. Halsey, Acting	4 Apr 1934
James E. Miller	20 Jun 1935
Solomon C. Parsons	13 Nov 1877
John M. Baldwin	2 Jun 1897
Joseph Douglass	22 Jun 1901
James D. Sturgill	13 Jul 1909
Felix G. Warden	22 Apr 1914
Lester C. Caudill	17 Feb 1923
John R. Halsey, Acting	4 Apr 1934
James E. Miller	20 Jun 1935
Victor B. Phipps, Acting	15 Jul 1949
Victor B. Phipps	25 Aug 1949
Blanche C. Wyatt, Acting	28 Feb 1964
Zollie Rose Wyatt	8 Jan 1965
Zollie R. Wyatt (Mrs)	23 Dec 1964
Colleen D. Wyatt Officer-In-Charge	20 Jan 1982
Phyllis O. Hale	15 May 1982
Sandy Compton Officer-In-Charge	27 Jul 2011



Type 1  
27 mm Black  
25 Apr 1893  
14 Jul 1898

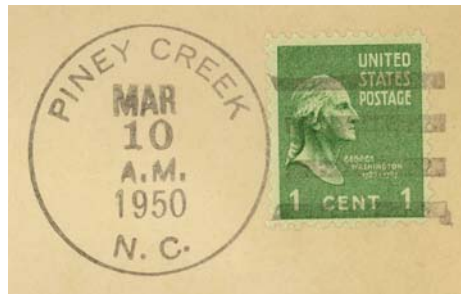
Type 2  
31 mm Black  
Doane Type 3-2  
20 Dec 1909  
15 Apr 1912



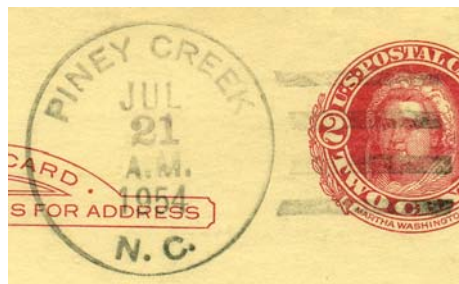
Type 3  
32 mm Black  
1910 Type B 4-Bar  
30 Dec 1920



Type 4  
30 mm Black  
1930 Type E 4-Bar  
11 Mar 1931  
30 Jun 1933



Type 5  
32 mm Black  
1936 Type F/1 4-Bar  
10 Mar 1950  
23 Mar 1954



Type 6  
33 mm Black  
1936 Type F/1 4-Bar  
21 Jul 1954

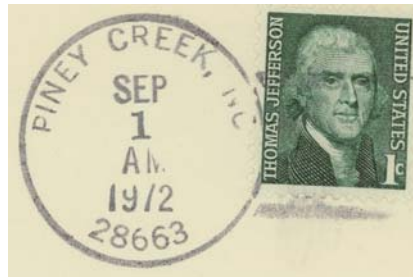
ALLEGHANY COUNTY

Piney Creek (Cont.)

(Alleghany)



Type 7  
33 mm Black  
1936 Type F/1 4-Bar  
4 Jan 1960  
25 Jan 1961



Type 8  
32 mm Black  
1963 Type F/2 4-Bar (28663)  
15 Jul 1969  
2 Sep 1972



Type 9  
32 mm Black  
1963 Type F/2 4-Bar (28663)  
22 Nov 1977  
16 Sep 1983



Type 10  
32.5 mm Black  
1963 Type F/2 4-Bar (28663)  
12 Oct 1990  
15 Oct 1990

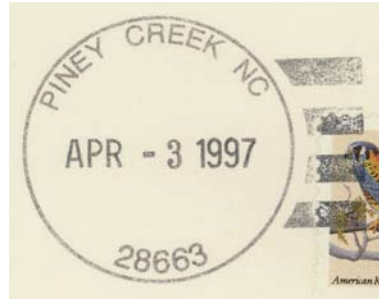


Type 11  
33 mm Black  
1963 Type F/2 4-Bar (28663)  
11 Aug 1995

ALLEGHANY COUNTY

Piney Creek (Cont.)

(Alleghany)



Type 12  
35 mm Black  
Self-Inking Postmarker (28663)  
3 Apr 1997  
24 Jun 1997



Type 13  
36.5 mm Black  
Self-Inking Postmarker (28663)  
13 Feb 2007



Type 14  
37 mm Red  
Self-Inking Postmarker (28663)  
13 Feb 2007  
24 Mar 2008

Plainfield

(Alleghany)

J. Henry Wagoner 22 Mar 1898  
Roan A. Price 15 Dec 1900  
Hiram E. McMillan 5 Mar 1901  
Discontinued 15 Jul 1908  
Papers to Furches



Type 1  
28 mm Black  
12 Sep 1901

# ALLEGHANY COUNTY

## Prather's Creek

(Alleghany)

James C. Jones	25 Feb 1879
Matilda C. Jones	16 Sep 1900
Mahala C. Jones	6 Nov 1900
Bettie Jones	12 Dec 1905
Discontinued	31 Aug 1907
Mail to Furches	



Type 1  
27.5 mm Black  
26 Jun 1896

## Roaring Gap

(Alleghany)

Carrie W. Inskeep	19 Jun 1926
Roger C. Royall, Acting	27 Jun 1962
Roger C. Royall	16 May 1966
Mrs. Carmen J. Barlow	13 Aug 1977
Ms. Pat Anders Officer-In-Charge	27 Apr 1995
Oscar Neal Howell	30 Sep 1995
Eugene R. Smith Officer-In-Charge	27 Aug 2003
Eugene R. Smith	12 Jun 2004



Type 1  
32.5 mm Black  
1923 Type A/3 4-Bar  
29 Jun 1936



Type 2  
33.5 mm Black  
1931 Type C/2 4-Bar  
19 Jun 1937  
28 Jun 1947



Type 3  
45 mm Black  
Non-Standard 4-Bar  
14 Aug 1948  
8 Sep 1948



Type 4  
34.5 mm Black  
1936 Type F/1 4-Bar  
29 Aug 1951

ALLEGHANY COUNTY

Roaring Gap (Cont.)

(Alleghany)



Type 5  
35.5 mm Black  
1936 Type F/1 4-Bar  
21 Jun 1955  
7 Sep 1955



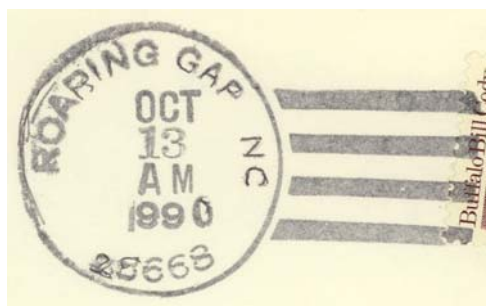
Type 6  
32.5 mm Black  
1936 Type F/1 4-Bar  
8 Sep 1958  
17 May 1963



Type 7  
32.5 mm Black  
1963 Type F/2 4-Bar (28668)  
7 Sep 1973  
31 Aug 1979



Type 8  
33 mm Black  
1963 Type F/2 4-Bar (28668)  
29 Nov 1982  
2 Aug 1984



Type 9  
34.5 mm Black  
1963 Type F/2 4-Bar (28668)  
13 Oct 1990

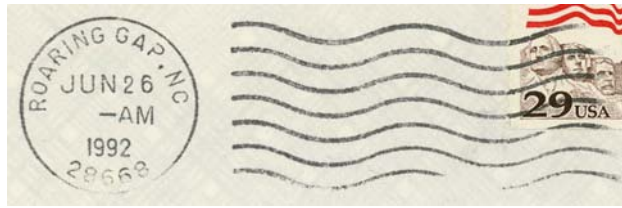
ALLEGHANY COUNTY

Roaring Gap (Cont.)

(Alleghany)



Type 10  
32 mm Black  
1963 Type F/2 4-Bar (28668)  
1 Jul 1991



Type 11  
23 mm Black  
International Machine  
Type ATSz 2724 (28668)  
26 Jun 1992  
8 Dec 1993



Type 12  
35.5 mm Black  
Self-Inking Postmarker (28668)  
21 Nov 2000



Type 13  
35 mm Black  
Self-Inking Postmarker (28668)  
16 Feb 2007  
8 Sep 2008



Type 14  
35 mm Red  
Self-Inking Postmarker (28668)  
16 Feb 2007  
8 Sep 2008

ALLEGHANY COUNTY

**Romulus**

(Alleghany)

Shady M. Caudill 17 May 1898  
Discontinued 15 Jun 1900  
Papers to Laura

*Romulus NC  
7-18-98*

Manuscript  
18 July 1898

**Saddle**

(Alleghany)

William L. Bottomly 22 Nov 1899  
Bird Lundy 30 Mar 1904  
Celia Wright 16 Jan 1906  
Discontinued 15 Mar 1918  
Mail to Barrett

**Scottville**

(Alleghany)

John C. Woodie 4 May 1901  
Joshua Richardson 31 Mar 1902  
Returned to Ashe County 27 May 1902

**Sheets**

(Alleghany)

George W. Sheets 18 Mar 1902  
Sue J. Osborne 26 Nov 1902  
Discontinued 15 May 1905  
Mail to Mouth of Wilson, Va.



Type 1  
28 mm Black  
15 Aug 1904

**Sibyl**

(Alleghany)

Thomas Farmar 7 May 1915  
Discontinued 30 Nov 1915  
Mail to Stratford

# ALLEGHANY COUNTY

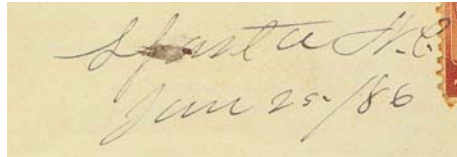
## Sparta

(Alleghany)

William L. Nooman	24 Jun 1879
Rufus K. Parks	9 Jul 1879
Washington K. Holbrook	13 Jan 1881
Berry Edwards	30 Jan 1882
Joseph C. Welch	17 Apr 1882
Robert H. Hockler	5 Jun 1884
Wesley W. Naylor	20 Jul 1889
H.K. Boyer	27 Nov 1889
Appointment rescinded	9 Dec 1889
John C. Edwards	5 Dec 1889
Hugh K. Boyer	30 Jan 1890
Hugh Hanks	10 Apr 1897
David M. Beck	25 May 1900
George Cheek (declined)	5 Mar 1903
Alfred L. Baker	20 Mar 1903
Mervyn Jones	2 Apr 1903
Mervyn Cheek	21 Jul 1903
Jonathan H. Gentry	16 Apr 1914
Robert H. Hackler	27 Mar 1915
Lula M. Choate	22 Sep 1922
George Glenn Nichols	6 Mar 1935
Samule W. Brown, Acting	23 Jul 1941
Silas R. Nichols	16 Mar 1942
David C. Wyatt, Acting	6 Nov 1957
Gene R. Irwin	30 Jul 1958
Charles C. Huntley Officer-In-Charge	9 Jan 1981
Joe Thomas Owens	14 Nov 1981
Dennis H. Peterman Officer-In-Charge	11 Jul 1989
Max R. Bolick Officer-In-Charge	21 Jul 1989
Bobby D. Chafin	30 Dec 1989
Deborah Boulware Officer-In-Charge	31 Mar 1992
Kelly Joe Edmisten	27 Jun 1992
Oscar Neal Howell Officer-In-Charge	15 Jan 1993
Bonita D. Campbell	26 Jun 1993
Joy Barlow Officer-In-Charge	25 May 1995
Hugh W. "Bobby" Vess Officer-In-Charge	20 Sep 1995
Hugh W. "Bobby" Vess	30 Sep 1995
Eugene Smith Officer-In-Charge	27 Oct 1998
Mary Jane Younger	5 Jun 1999
Raymond Cesare Officer-In-Charge	25 Feb 2004
Kimberly Reeves Officer-In-Charge	20 Jan 2005
Christy A. Baldwin	2 Apr 2005
Terri Poe Officer-In-Charge	27 Jul 2007
William C. Brown	8 Dec 2007
Beth Berong Officer-In-Charge	24 Jul 2008



Type 1  
27 mm Black  
7 Sep 1883



Manuscript  
25 June 1883



Type 2  
28.5 mm Black  
9 Nov 1888  
20 Feb 1899



Type 3  
28.5 mm Black  
Metal Duplex Type H2  
13 Nov 1899  
19 Nov 1906



Type 4  
31 mm Black  
1906 Type A/1 4-Bar  
21 Dec 1907  
30 Sep 1908



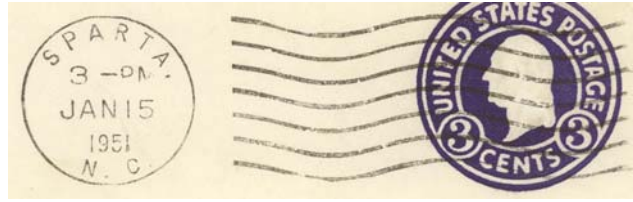
Type 5  
32 mm Black  
1910 Type B 4-Bar  
28 Nov 1913  
27 Nov 1917

Double strike of top killer bars

ALLEGHANY COUNTY

Sparta (Cont.)

(Alleghany)



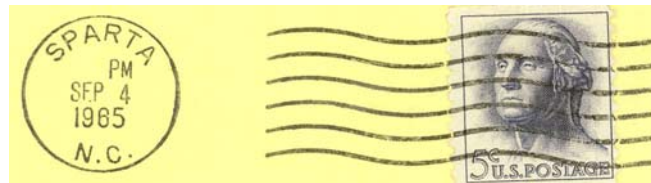
Type 6  
22.5 mm Black  
International Machine  
Type AT/S 2711  
15 Jul 1942  
5 Jan 1952



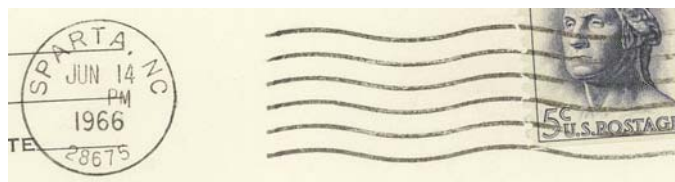
Type 7  
28 mm Magenta  
24 Apr 1950



Type 8  
31 mm Magenta  
29 Dec 1954



Type 9  
21 mm Black  
Universal Machine  
Type DT 300  
20 Feb 1956  
4 Sep 1965



Type 10  
21 mm Black  
Universal Machine  
Type DTSz 300 (28675)  
14 Jun 1966  
27 Dec 1974



Type 11  
34 mm Black  
1963 Type F/2 4-Bar (28675)  
1 Apr 1974

ALLEGHANY COUNTY

Sparta (Cont.)

(Alleghany)



Type 12  
33.5 mm Black  
1963 Type F/2 4-Bar (28675)  
2 Apr 1987



Type 13  
31 mm Magenta  
27 Aug 1990



Type 14  
34.5 mm Black  
Self-Inking Postmarker (28675)  
5 Apr 1997



Type 15  
28 mm Red  
Self-Inking Postmarker (28675)  
7 Apr 1997



Type 16  
36 x 30.5 mm Red  
Self-Inking Postmarker (28675)  
18 Jul 2005  
8 Sep 2008

ALLEGHANY COUNTY

Sparta (Cont.)

(Alleghany)



Type 17  
36 mm Red  
Self-Inking Postmarker (28675)  
3 Aug 2007



Type 18  
33.5 mm Red  
Self-Inking Postmarker (28675)  
25 Aug 2008

Receiving datestamp



Type R1  
28.5 mm Black  
10 Jul 1902

Stratford

(Alleghany)

Wilbur B. Estep	5 Mar 1898
Hiram Edwards, Jr.	23 Nov 1899
Haywood D. Estep	7 Apr 1900
John R. Edwards	11 Apr 1905
Rufus Billings	12 Dec 1908
William G. Sheppard	20 Jan 1912
Letcher E. Edwards	21 Mar 1914
John R. Sanders	12 Apr 1917
Charles M. Sanders	21 Aug 1920
Carrie Sanders, Acting	14 Mar 1945
Mamie A. Joines	5 Apr 1946
Discontinued	28 Feb 1955
Mail to Sparta	



Type 1  
28 mm Black  
8 Apr 1902

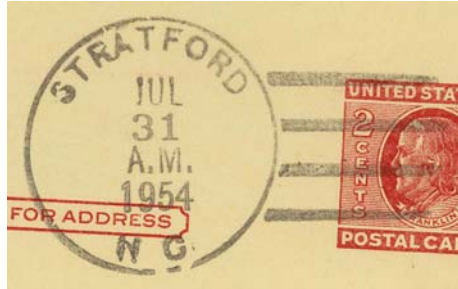


Type 2  
31 mm Black  
1910 Type B 4-Bar  
6 Dec 1912  
21 Dec 1916

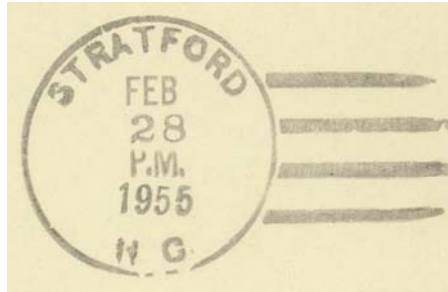
## ALLEGHANY COUNTY

### Stratford (Cont.)

(Alleghany)



Type 3  
33 mm Black  
1936 Type F/1 4-Bar  
17 Jul 1946  
31 Jul 1954



Type 4  
33 mm Black  
1936 Type F/1 4-Bar  
28 Feb 1955



Type 4  
28 mm Magenta  
28 Feb 1955

### Teddy

(Alleghany)

John W. Atwood            9 Apr 1903  
Discontinued            31 Oct 1905  
Mail to Piney Creek

### Thompson

(Alleghany)

Aaron Woodruff            8 Oct 1884  
Julia A. Woodruff        14 Mar 1888  
Discontinued            17 Jul 1889  
Papers to Devotion, Surry County

## ALLEGHANY COUNTY

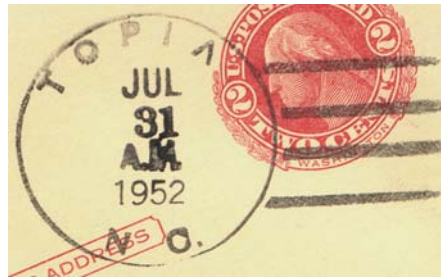
### Topia

(Alleghany)

Jesse J. Waddell	17 Sep 1884
Phebe E. Fowlkes	29 Nov 1887
Jesse J. Waddell	10 Sep 1895
Sarah A. Waddell	15 Sep 1899
Belle Blevins	11 Apr 1916
Discontinued	14 Sep 1918
Mail to Peden	
Delia Pugh, Acting	7 Jan 1935
Delia Pugh	16 Feb 1935
Discontinued	31 Jul 1952
Mail to Scottville	



Type 1  
31 mm Black  
1906 Type A/1 4-Bar  
25 Mar 1908



Type 2  
34 mm Black  
1931 Type C/2 4-Bar  
4 May 1950  
31 Jul 1952

### Van

(Alleghany)

Troy J. Carico	29 Apr 1905
Discontinued	31 Jan 1906
Mail to Ennice	

### Vera

(Alleghany)

Jordan S. Lyons	24 Jul 1905
Discontinued	15 Aug 1907
Mail to Edmonds	

### Vox

(Alleghany)

William Jennings	18 May 1900
R. Linney Cheek	19 Feb 1908
Minnie M. Edwards	19 Feb 1914
Charity A. Wagoner	30 Mar 1916
James A. Maines	12 Jul 1926
Flora V. Maines, Acting	17 Aug 1931
Flora V. Maines	23 Nov 1931
Discontinued	31 Mar 1932
Mail to Edwards Crossroads	

## ALLEGHANY COUNTY

### Walls

(Alleghany)

John M. Richardson	3 Jul 1903
John R. Joines	7 Dec 1905
Appointment rescinded	22 Jan 1906
John M. Richardson	22 Jan 1906
John A. Osborn	22 Jun 1907
Dott L. Parish	26 Jan 1914
Discontinued	30 Sep 1915
Mail to Sparta	

### Ward

(Alleghany)

Andrew J. Ward	13 Jul 1900
Discontinued	31 Oct 1905
Mail to Piney Creek	



Type 1  
27.5 mm Black  
22 Jul 1901

### Whitehead

(Alleghany)

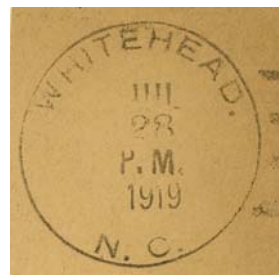
William L. Hoppers	5 Dec 1883
Ross Mehargue	9 Jul 1884
Levi Jones	26 Jun 1885
William L. Hoppers	14 Aug 1885
Thomas A. Fender	26 Mar 1886
William L. Hoppers	11 Oct 1889
Thomas J. Carson, Jr.	2 Apr 1895
Virginia E. Joines	29 Apr 1897
John E. Moxley	6 Mar 1900
Isom Edwards	15 Jan 1902
Hilrie C. Caudill	7 May 1902
Celia Caudill	20 Mar 1903
John C. Joines	16 Mar 1905
Willie F. Hoppers	22 Dec 1910
Minnie L. Pool	29 Apr 1912
Daniel M. Edwards	4 Feb 1914
William B. Reeves	22 Apr 1915
Ruth Edwards, Acting	1 May 1940
Ethlyn E. Richardson	20 Nov 1940
Stella P. Joines, Acting	19 Dec 1951
Ruth E.M. Edwards	3 Jul 1952
Charles C. Caudill, Acting	30 Sep 1968
Charles C. Caudill	6 Mar 1971
Barbara Fender Officer-In-Charge	20 May 1977
Tommy K. Brady	28 Jan 1978
Robert Lee Adams	11 Mar 1978
C. Larry Phipps Officer-In-Charge	6 May 1988
Lawrence D. Cianchetta	18 Jun 1988
Service suspended on	26 May 1993
Discontinued on 6 Sep 1995	
Mail to Sparta	



Type 1  
33.5 mm Black  
14 Jul 1891



Type 2  
26.5 mm Black  
29 Mar 1894  
23 Mar 1899



Type 3  
31.5 mm Black  
1910 Type B 4-Bar  
28 Jul 1919

ALLEGHANY COUNTY

Whitehead (Cont.)

(Alleghany)



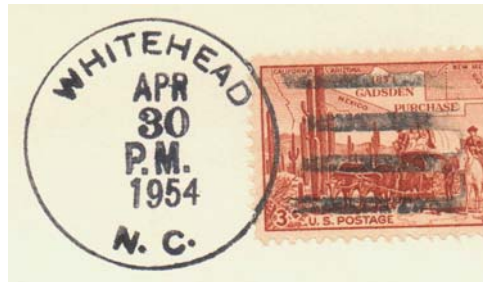
Type 4  
32 mm Black  
1925 Type C/1 4-Bar  
28 Jul 1936



Type 5  
32.5 mm Black  
1936 Type F/1 4-Bar  
20 May 1946



Type 6  
32.5 mm Black  
1936 Type F/1 4-Bar  
23 Sep 1948



Type 7  
33 mm Black  
1936 Type F/1 4-Bar  
1 Apr 1947  
31 Jul 1954



Type 8  
33 mm Black  
1936 Type F/1 4-Bar  
29 Oct 1964

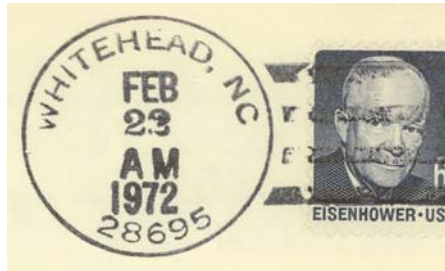
ALLEGHANY COUNTY

Whitehead (Cont.)

(Alleghany)



Type 9  
33.5 mm Black  
1963 Type F/2 4-Bar (28695)  
18 Apr 1967  
23 Oct 1970



Type 10  
33.5 mm Black  
1963 Type F/2 4-Bar (28695)  
23 Feb 1972  
9 Sep 1976



Type 11  
36 mm Black  
1963 Type F/2 4-Bar (28695)  
25 Feb 1981  
8 Aug 1988